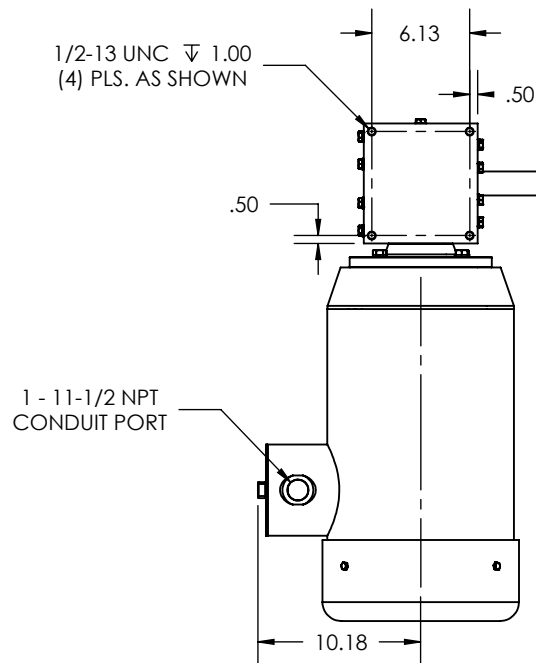
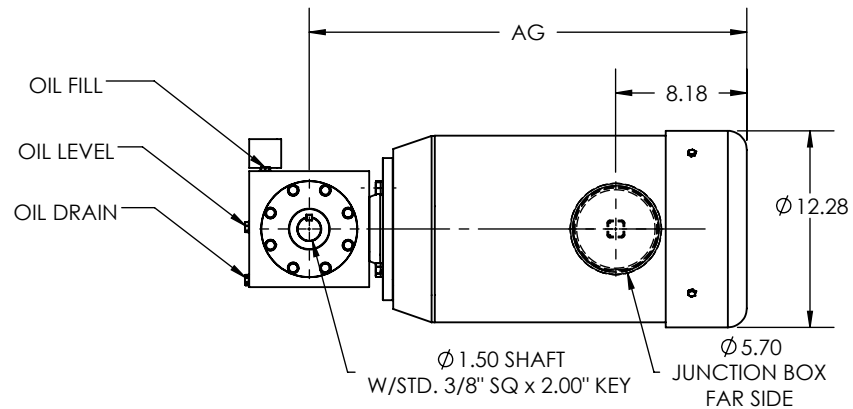
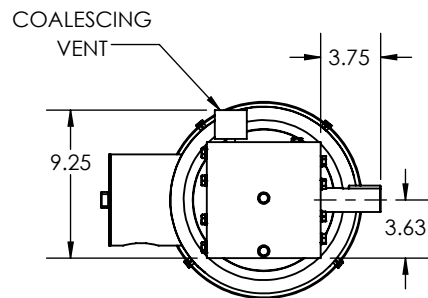


REVISIONS			
REV.	DESCRIPTION	BY	DATE



AG DIMENSION			
RATIO	OUTPUT RPM	15 HP	20 HP
1:1	1740	25.84	27.34
1.5:1	1160		
2:1	870		
3:1	580		

1. OTHER SHAFT SIZES AVAILABLE
2. OTHER RATIOS AVAILABLE UPON REQUEST

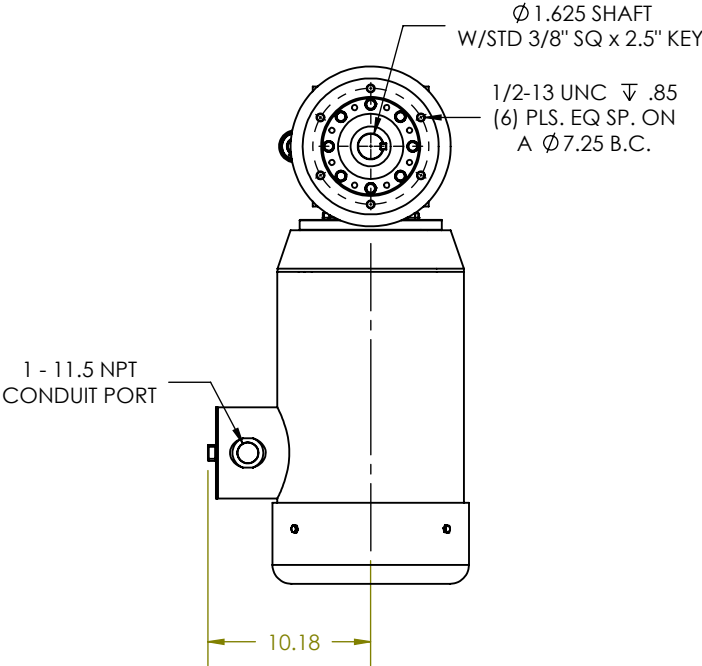
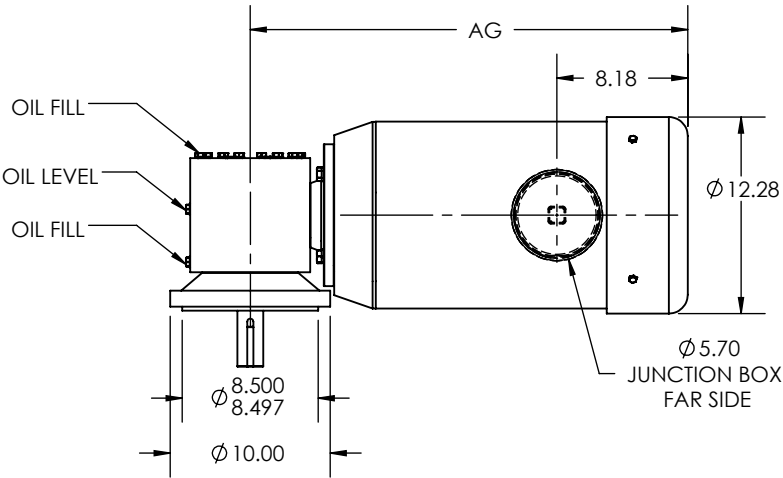
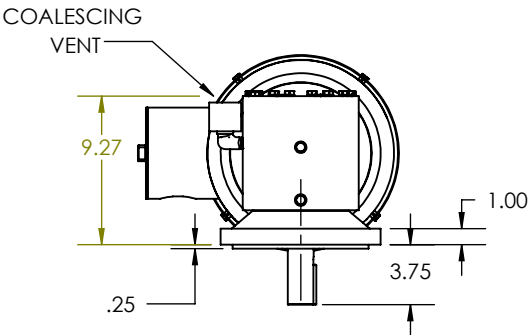
THIS DRAWING CONTAINS INFORMATION WHICH IS PROPRIETARY AND CONFIDENTIAL TO STAINLESS MOTORS, INC., AND IS TRANSMITTED IN CONFIDENCE. THE REPRODUCTION, USE OR DISCLOSURE, IN WHOLE OR IN PART, OF THE DESIGN CONTAINED HEREIN TO OTHERS IS PROHIBITED WITHOUT THE WRITTEN CONSENT OF STAINLESS MOTORS, INC.

© COPYRIGHT STAINLESS MOTORS, INC. ALL RIGHTS RESERVED. YEAR OF COPYRIGHT IS FIRST YEAR INDICATED ON THE DRAWING.

DO NOT SCALE DRAWING	MATERIAL: T304 EXTERIOR 17-4 H1150 SHAFT	STAINLESS MOTORS INC.	
UNLESS OTHERWISE SPECIFIED	FINISH: #4 LINE		
DIMENSIONS ARE IN INCHES	GENERAL TOLERANCES:	DRAWN: BDJ	SB250 FRAME ORIENTATION 1 MOUNTING SURFACE A SANIFAN
DIMENSIONS AND SURFACE TEXTURE DESIGNATIONS APPLY PRIOR TO FINISH	.X = +/- 0.015 .XX = +/- 0.010 .XXX = +/- 0.005	CHECK:	
DEBURR AND BREAK ALL SHARP EDGES 0.005 - 0.015	FRACTIONAL = +/- 1/64 ANGULAR = +/- 1/2°	ENG: JO	
		DATE: 6/12/2015	
REFERENCE DRAWING: F:\Website\GEARBOXES\SB\SB250SRXXSXXXXX1A			

NOTES:

REVISIONS			
REV.	DESCRIPTION	BY	DATE



AG DIMENSION			
RATIO	OUTPUT RPM	15 HP	20 HP
1:1	1740	25.84	27.34
1.5:1	1160		
2:1	870		
3:1	580		

- OTHER SHAFT SIZES AVAILABLE
- OTHER RATIOS AVAILABLE UPON REQUEST

NOTES:

THIS DRAWING CONTAINS INFORMATION WHICH IS PROPRIETARY AND CONFIDENTIAL TO STAINLESS MOTORS, INC., AND IS TRANSMITTED IN CONFIDENCE. THE REPRODUCTION, USE OR DISCLOSURE, IN WHOLE OR IN PART, OF THE DESIGN CONTAINED HEREIN TO OTHERS IS PROHIBITED WITHOUT THE WRITTEN CONSENT OF STAINLESS MOTORS, INC.

© COPYRIGHT STAINLESS MOTORS, INC. ALL RIGHTS RESERVED. YEAR OF COPYRIGHT IS FIRST YEAR INDICATED ON THE DRAWING.

DO NOT SCALE DRAWING UNLESS OTHERWISE SPECIFIED DIMENSIONS ARE IN INCHES DIMENSIONS AND SURFACE TEXTURE DESIGNATIONS APPLY PRIOR TO FINISH DEBURR AND BREAK ALL SHARP EDGES 0.005 - 0.015	MATERIAL: T304 EXTERIOR 17-4 H1150 SHAFT	STAINLESS MOTORS INC.	
	FINISH: #4 LINE		
	GENERAL TOLERANCES:		DRAWN: BDJ
	.X = +/- 0.015 .XX = +/- 0.010 .XXX = +/- 0.005		CHECK: JO
FRACTIONAL = +/- 1/64 ANGULAR = +/- 1/2°		DATE: 6/15/2015	SBT250 FRAME ORIENTATION 4 C-FACE MOUNT SANIFAN
REFERENCE DRAWING: F:\Website\GEARBOXES\SB\SB250XXXXCXXXX4N			