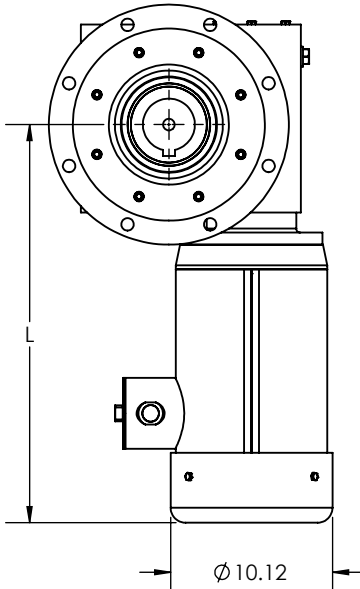
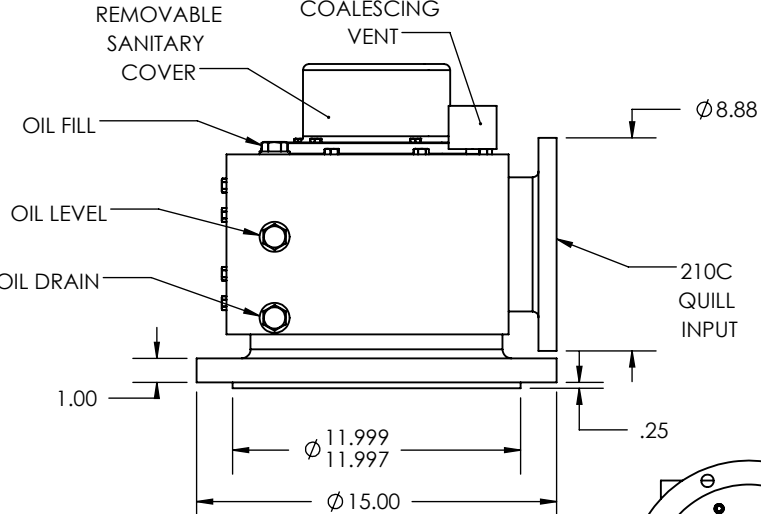
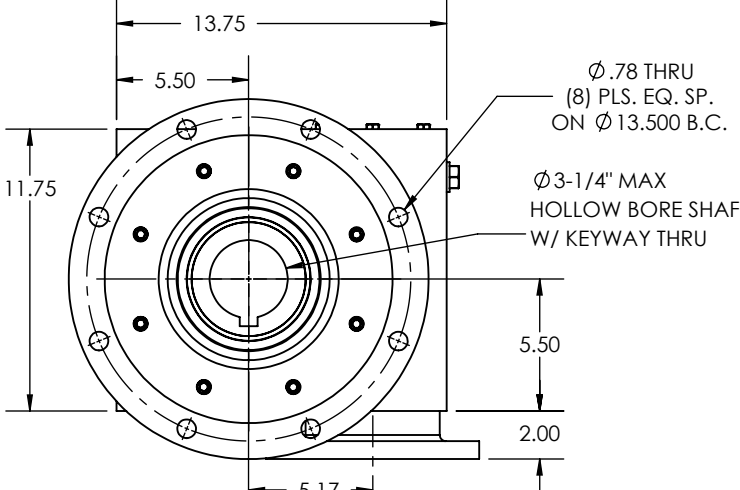
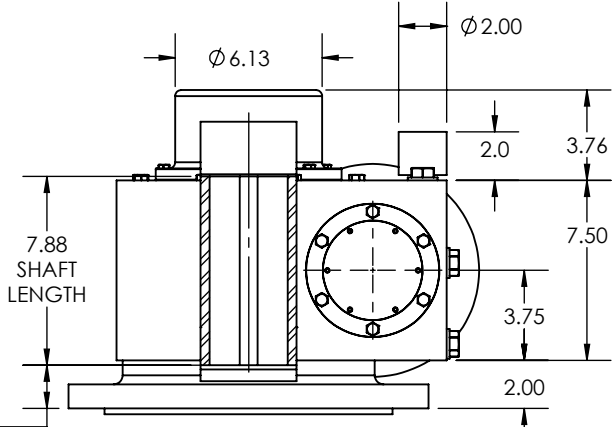


DATE \_\_\_\_\_

REDUCTION RATIO	L			
	3 HP	5 HP	7-1/2 HP	10 HP
5	---	---	---	24.88
7.5	---	---	---	24.88
10	---	---	---	24.88
15	---	---	24.88	---
20	---	---	24.88	---
25	---	24.88	---	---
30	---	24.88	---	---
40	22.28*	---	---	---
50	22.28*	---	---	---
60	22.28*	---	---	---

NOTE: VALUES FOR 210C; 4 POLE; TEFC MOTORS  
\*180TC FRAME W/ Ø8.46 SHROUD

1. OTHER SHAFT SIZES AVAILABLE
2. OTHER FLANGE SIZES AVAILABLE
3. OTHER OUTPUT SHAFT ATTACHMENT OPTIONS AVAILABLE

NOTES:

THIS DRAWING CONTAINS INFORMATION WHICH IS PROPRIETARY AND CONFIDENTIAL TO STAINLESS MOTORS, INC., AND IS TRANSMITTED IN CONFIDENCE. THE REPRODUCTION, USE OR DISCLOSURE, IN WHOLE OR IN PART, OF THE DESIGN CONTAINED HEREIN TO OTHERS IS PROHIBITED WITHOUT THE WRITTEN CONSENT OF STAINLESS MOTORS, INC.

© COPYRIGHT STAINLESS MOTORS, INC. ALL RIGHTS RESERVED. YEAR OF COPYRIGHT IS FIRST YEAR INDICATED ON THE DRAWING

UNLESS OTHERWISE SPECIFIED

### DIMENSIONS AND SURFACE TEXTURE DESIGNATIONS

DEBURR AND BREAK ALL  
SHARP EDGES 0.005 - 0.015

DRAWING NUMBER: F:\Website\GEARBOXES\RA\RA520HRXXCXXXO4N

DRAWING NUMBER: F:\Website\GEARBOXES\RA\RA520HRXXCXXXO4N

MATERIAL:	T304 EXTERIOR, 17-4 H1150 SHAFT
FINISH:	#4 LINE

.X	= +/-0.015	
.XX	= +/- 0.010	FRA

.XX = +/- 0.010	FRACTIONAL = +/- 1/64
.XXX = +/- 0.005	ANGULAR = +/- 1/2°

STAINLESS  
MOTORS INC.

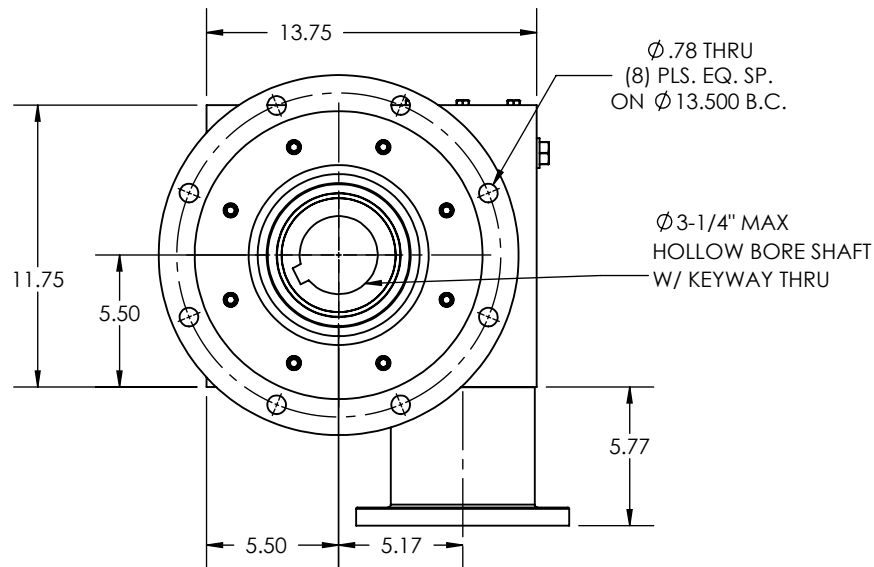
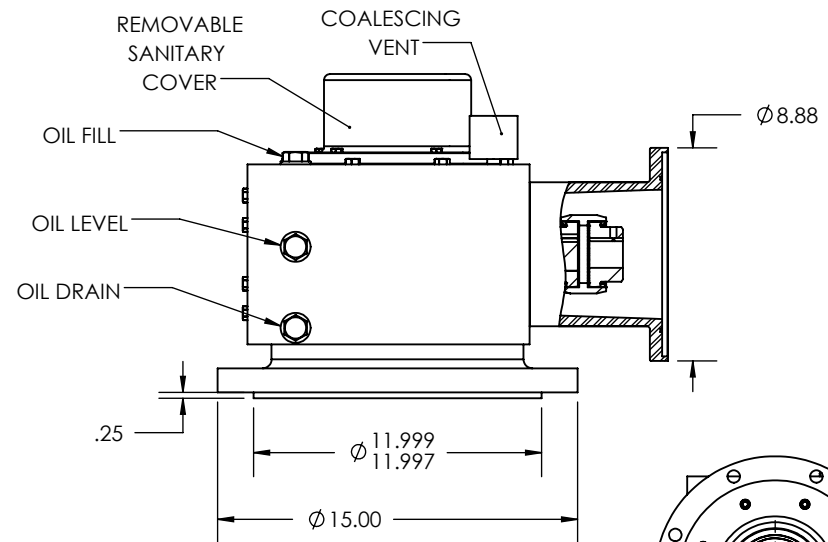
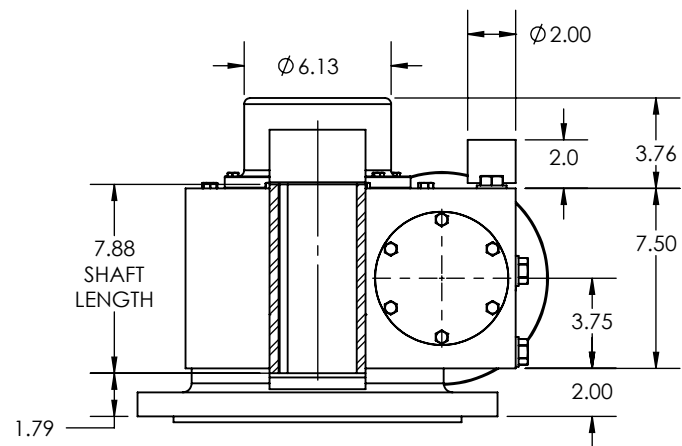
CHECK:

DATE: 9/28/2017

DATE: 9/28/2017

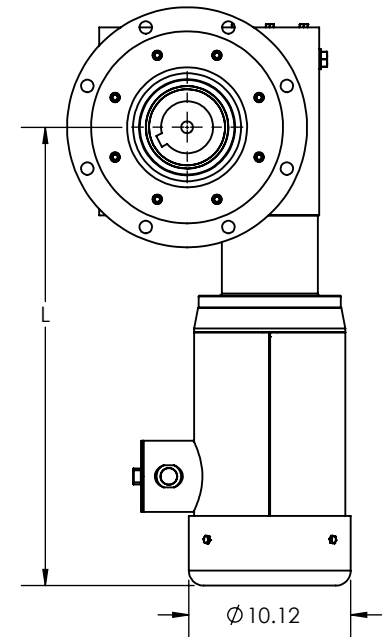
RA520, 4N MOUNTING,  
HOLLOW BORE SHAFT,  
FLANGED OUTPUT,  
210C QUILL INPUT

REVISIONS			
REV.	DESCRIPTION	BY	DATE



REDUCTION RATIO	L			
	3 HP	5 HP	7-1/2 HP	10 HP
5	---	---	---	28.65
7.5	---	---	---	28.65
10	---	---	---	28.65
15	---	---	28.65	---
20	---	---	28.65	---
25	---	28.65	---	---
30	---	28.65	---	---
40	24.05*	---	---	---
50	24.05*	---	---	---
60	24.05*	---	---	---

NOTE: VALUES FOR 210C; 4 POLE; TEFC MOTORS  
\*180TC FRAME W/ Ø8.46 SHROUD



- OTHER SHAFT SIZES AVAILABLE
- OTHER MOUNTING ORIENTATIONS AVAILABLE
- OTHER OUTPUT SHAFT ATTACHMENT OPTIONS AVAILABLE

## NOTES:

THIS DRAWING CONTAINS INFORMATION WHICH IS PROPRIETARY AND CONFIDENTIAL TO STAINLESS MOTORS, INC., AND IS TRANSMITTED IN CONFIDENCE. THE REPRODUCTION, USE OR DISCLOSURE, IN WHOLE OR IN PART, OF THE DESIGN CONTAINED HEREIN TO OTHERS IS PROHIBITED WITHOUT THE WRITTEN CONSENT OF STAINLESS MOTORS, INC.

© COPYRIGHT STAINLESS MOTORS, INC. ALL RIGHTS RESERVED. YEAR OF COPYRIGHT IS FIRST YEAR INDICATED ON THE DRAWING.

DO NOT SCALE DRAWING  
UNLESS OTHERWISE SPECIFIED

DIMENSIONS ARE IN INCHES  
DIMENSIONS AND SURFACE TEXTURE DESIGNATIONS APPLY PRIOR TO FINISH

DEBURR AND BREAK ALL SHARP EDGES 0.005 - 0.015

REFERENCE DRAWING:  
NUMBER: F:\Website\GEARBOXES\RA\RA520HRXXGXXXO4N

MATERIAL: T304 EXTERIOR, 17-4 H1150 SHAFT  
FINISH: #4 LINE

GENERAL TOLERANCES:

X = +/- 0.015  
XX = +/- 0.010  
XXX = +/- 0.005

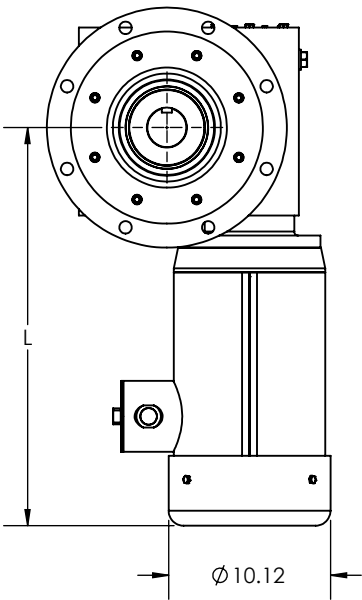
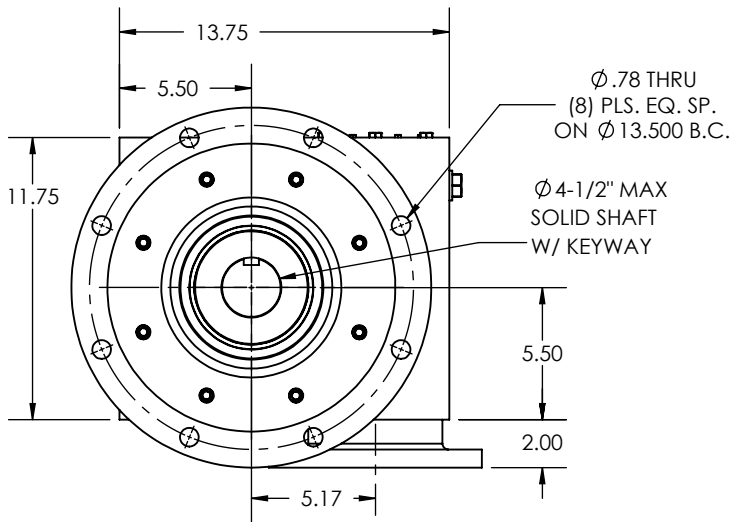
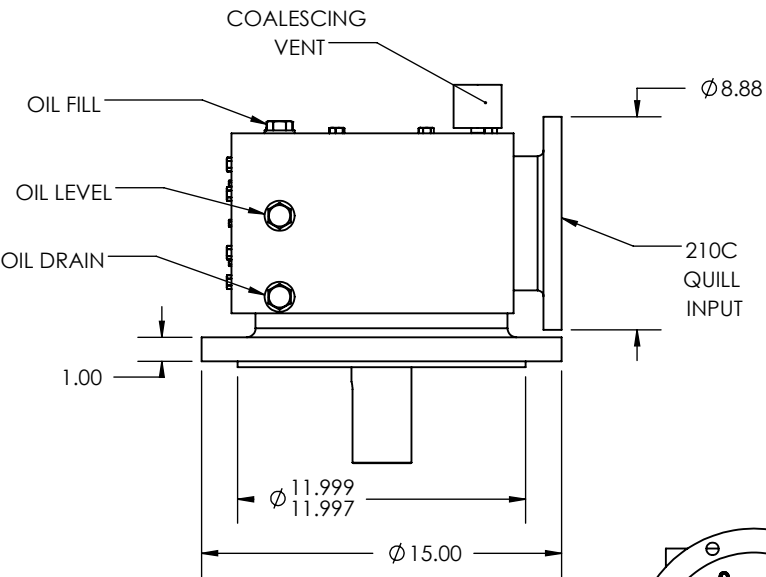
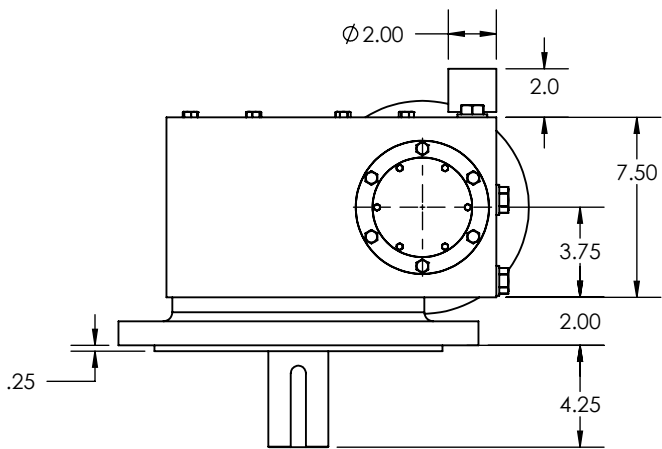
FRACTIONAL = +/- 1/64  
ANGULAR = +/- 1/2°

**STAINLESS MOTORS INC.**

DRAWN: RSC  
CHECK:  
ENG: JO  
DATE: 9/28/2017

RA520, 4A MOUNTING, HOLLOW BORE SHAFT, 210C COUPLED INPUT

REVISIONS			
REV.	DESCRIPTION	BY	DATE



REDUCTION RATIO	L			
	3 HP	5 HP	7-1/2 HP	10 HP
5	---	---	---	24.88
7.5	---	---	---	24.88
10	---	---	---	24.88
15	---	---	24.88	---
20	---	---	24.88	---
25	---	24.88	---	---
30	---	24.88	---	---
40	22.28*	---	---	---
50	22.28*	---	---	---
60	22.28*	---	---	---

NOTE: VALUES FOR 210C; 4 POLE; TEFC MOTORS  
\*180TC FRAME W/ Ø 8.46 SHROUD

- OTHER SHAFT SIZES AVAILABLE
- OTHER FLANGE SIZES AVAILABLE

### NOTES:

THIS DRAWING CONTAINS INFORMATION WHICH IS PROPRIETARY AND CONFIDENTIAL TO STAINLESS MOTORS, INC., AND IS TRANSMITTED IN CONFIDENCE. THE REPRODUCTION, USE OR DISCLOSURE, IN WHOLE OR IN PART, OF THE DESIGN CONTAINED HEREIN TO OTHERS IS PROHIBITED WITHOUT THE WRITTEN CONSENT OF STAINLESS MOTORS, INC.

© COPYRIGHT STAINLESS MOTORS, INC. ALL RIGHTS RESERVED. YEAR OF COPYRIGHT IS FIRST YEAR INDICATED ON THE DRAWING.

DO NOT SCALE DRAWING  
UNLESS OTHERWISE SPECIFIED

DIMENSIONS ARE IN INCHES  
DIMENSIONS AND SURFACE TEXTURE DESIGNATIONS APPLY PRIOR TO FINISH

DEBURR AND BREAK ALL SHARP EDGES 0.005 - 0.015

REFERENCE DRAWING:  
NUMBER: F:\Website\GEARBOXES\RA\RA520SRXXCXXXO4N

MATERIAL: T304 EXTERIOR, 17-4 H1150 SHAFT  
FINISH: #4 LINE

GENERAL TOLERANCES:  
.X = +/- 0.015  
.XX = +/- 0.010  
.XXX = +/- 0.005

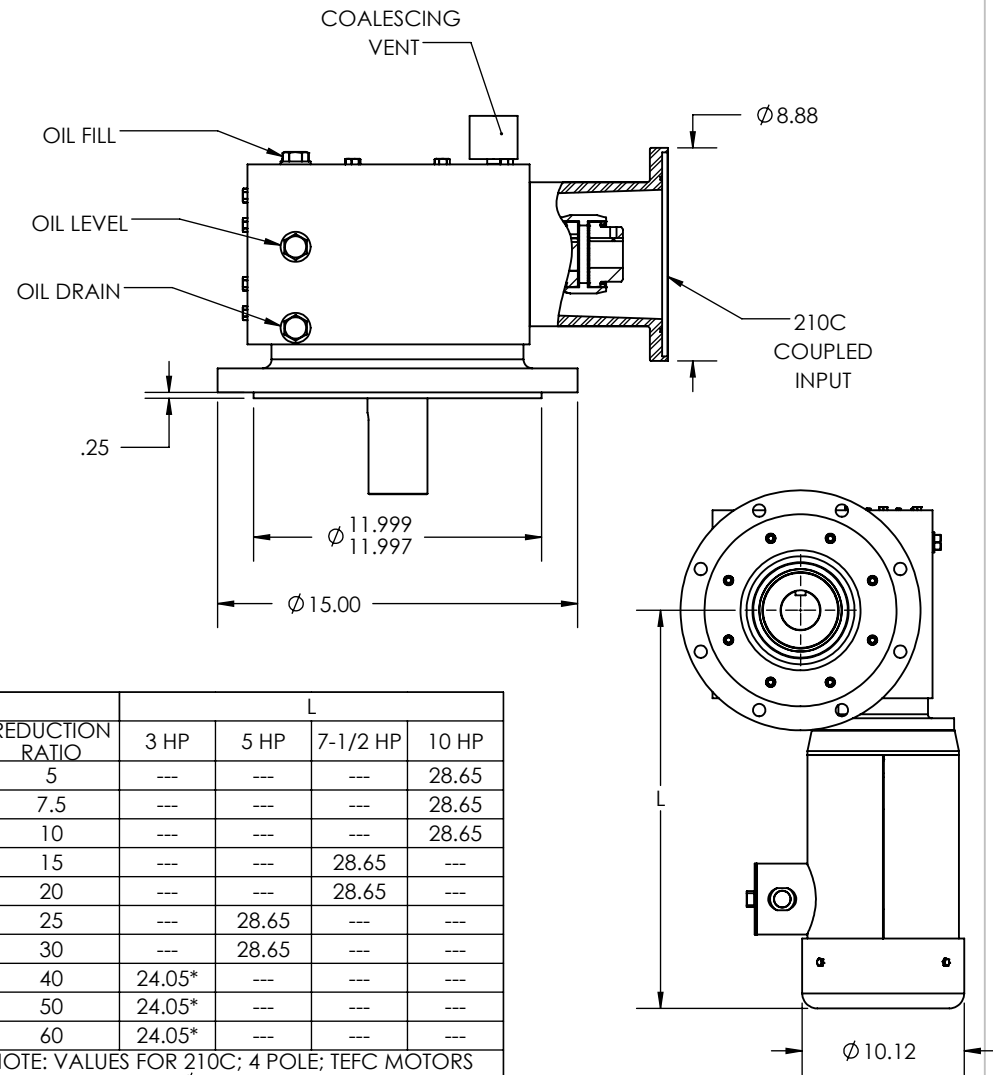
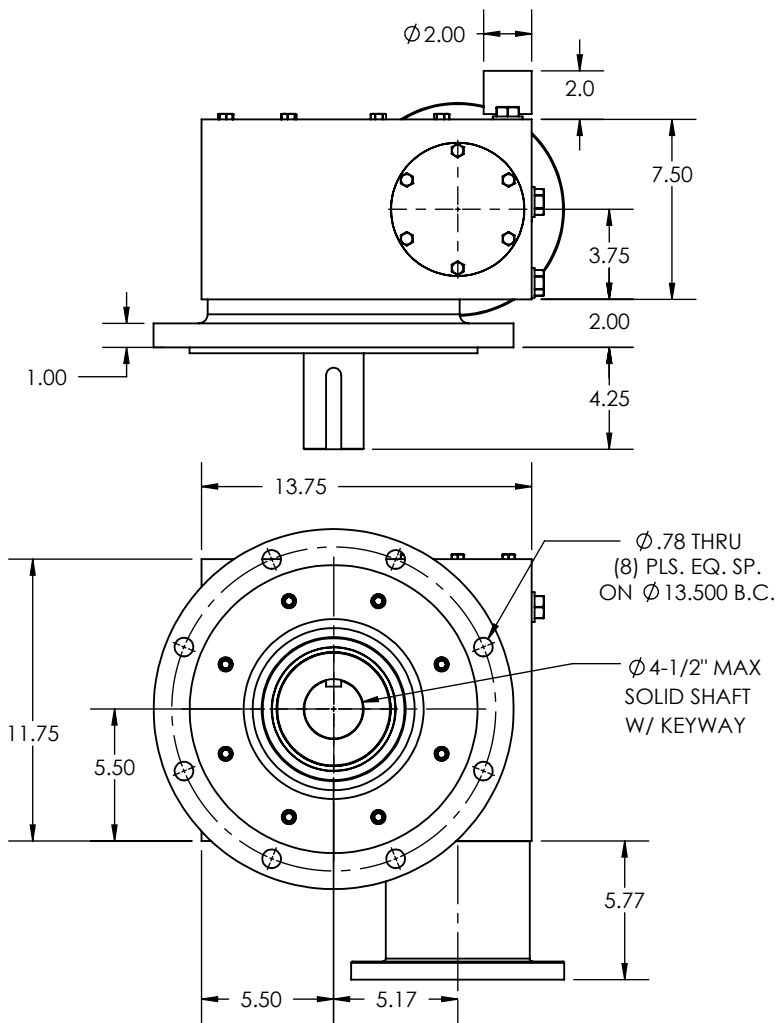
FRACTIONAL = +/- 1/64  
ANGULAR = +/- 1/2°

STAINLESS MOTORS INC.

DRAWN: RSC  
CHECK:  
ENG: JO  
DATE: 9/28/2017

RA520, 4N MOUNTING, SOLID SHAFT, FLANGED OUTPUT, 210C QUILL INPUT

REVISIONS			
REV.	DESCRIPTION	BY	DATE



REDUCTION RATIO	L			
	3 HP	5 HP	7-1/2 HP	10 HP
5	---	---	---	28.65
7.5	---	---	---	28.65
10	---	---	---	28.65
15	---	---	28.65	---
20	---	---	28.65	---
25	---	28.65	---	---
30	---	28.65	---	---
40	24.05*	---	---	---
50	24.05*	---	---	---
60	24.05*	---	---	---

NOTE: VALUES FOR 210C; 4 POLE; TEFC MOTORS  
\*180TC FRAME W/  $\phi 8.46$  SHROUD

1. OTHER SHAFT SIZES AVAILABLE
2. OTHER FLANGE SIZES AVAILABLE
3. OTHER MOUNTING ORIENTATIONS AVAILABLE

## NOTES:

THIS DRAWING CONTAINS INFORMATION WHICH IS PROPRIETARY AND CONFIDENTIAL TO STAINLESS MOTORS, INC., AND IS TRANSMITTED IN CONFIDENCE. THE REPRODUCTION, USE OR DISCLOSURE, IN WHOLE OR IN PART, OF THE DESIGN CONTAINED HEREIN TO OTHERS IS PROHIBITED WITHOUT THE WRITTEN CONSENT OF STAINLESS MOTORS, INC.

© COPYRIGHT STAINLESS MOTORS, INC. ALL RIGHTS RESERVED. YEAR OF COPYRIGHT IS FIRST YEAR INDICATED ON THE DRAWING.

DO NOT SCALE DRAWING  
UNLESS OTHERWISE SPECIFIED

DIMENSIONS ARE IN INCHES  
DIMENSIONS AND SURFACE TEXTURE DESIGNATIONS APPLY PRIOR TO FINISH

DEBURR AND BREAK ALL SHARP EDGES 0.005 - 0.015

REFERENCE DRAWING:  
NUMBER: F:\Website\GEARBOXES\RA\RA520SXXGXXXO4N

MATERIAL: T304 EXTERIOR, 17-4 H1150 SHAFT  
FINISH: #4 LINE

GENERAL TOLERANCES:

X =  $\pm 0.015$   
XX =  $\pm 0.010$   
XXX =  $\pm 0.005$

FRACTIONAL =  $\pm 1/64$   
ANGULAR =  $\pm 1/2^\circ$

**STAINLESS MOTORS INC.**

DRAWN: RSC

CHECK:

ENG: JO

DATE: 9/28/2017

RA520, 4N MOUNTING, FLANGED OUTPUT, SOLID SHAFT, 210C COUPLED INPUT