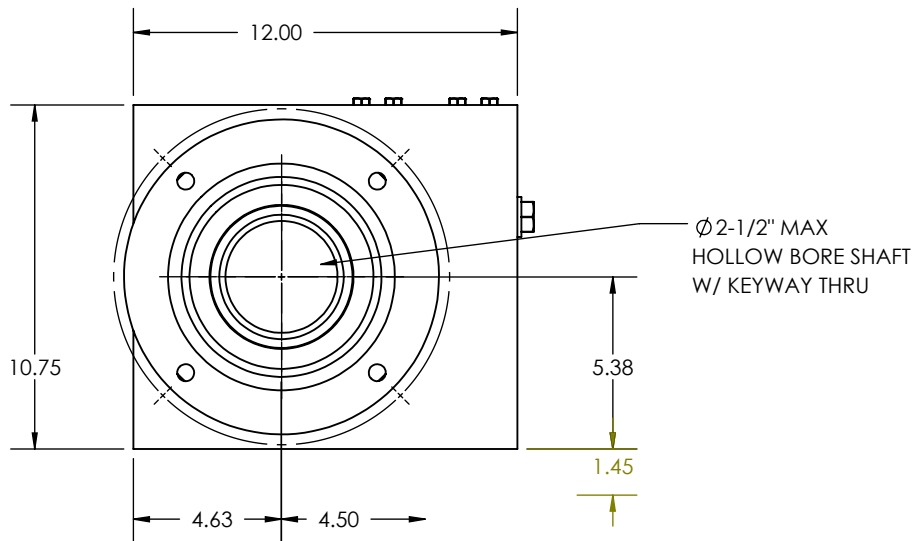
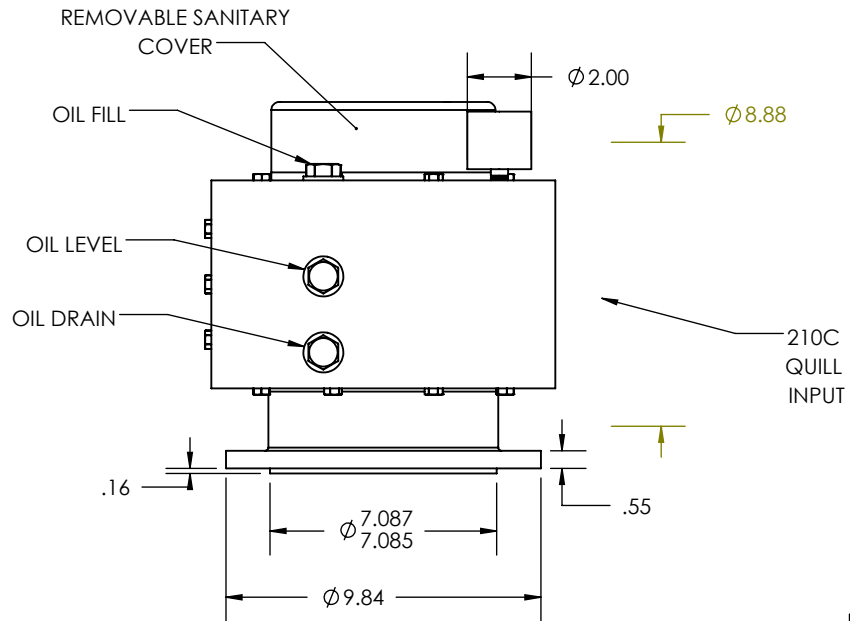
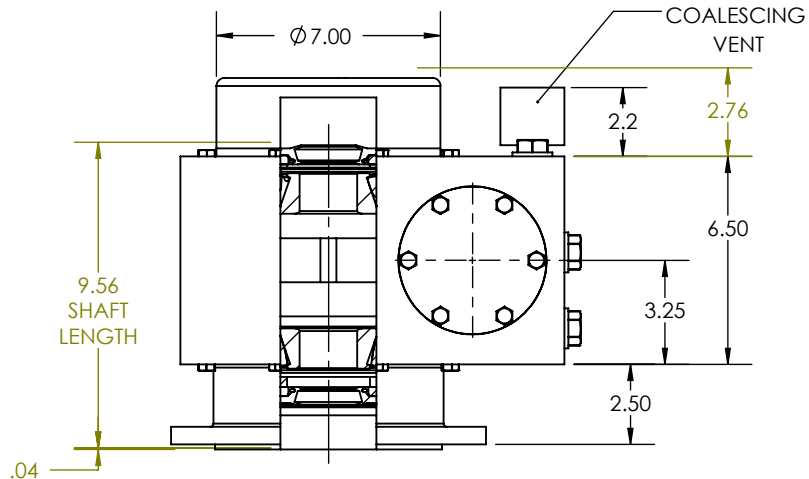
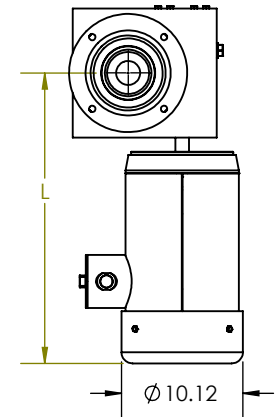


REVISIONS			
REV.	DESCRIPTION	BY	DATE



REDUCTION RATIO	L				
	2 HP	3 HP	5 HP	7-1/2 HP	10 HP
5	---	---	---	---	24.20
7.5	---	---	---	24.20	---
10	---	---	---	24.20	---
15	---	---	24.20	---	---
20	---	---	24.20	---	---
25	---	19.60*	---	---	---
30	---	19.60*	---	---	---
40	---	19.60*	---	---	---
50	19.60*	---	---	---	---
60	19.60*	---	---	---	---

NOTE: VALUES FOR 210C; 4 POLE; TEFC MOTORS
*180TC FRAME W/ Ø8.46 SHROUD



- OTHER SHAFT SIZES AVAILABLE
- OTHER FLANGE SIZES AVAILABLE
- OTHER OUTPUT SHAFT ATTACHMENT OPTIONS AVAILABLE

NOTES:

THIS DRAWING CONTAINS INFORMATION WHICH IS PROPRIETARY AND CONFIDENTIAL TO STAINLESS MOTORS, INC., AND IS TRANSMITTED IN CONFIDENCE. THE REPRODUCTION, USE OR DISCLOSURE, IN WHOLE OR IN PART, OF THE DESIGN CONTAINED HEREIN TO OTHERS IS PROHIBITED WITHOUT THE WRITTEN CONSENT OF STAINLESS MOTORS, INC.

© COPYRIGHT STAINLESS MOTORS, INC. ALL RIGHTS RESERVED. YEAR OF COPYRIGHT IS FIRST YEAR INDICATED ON THE DRAWING.

DO NOT SCALE DRAWING

UNLESS OTHERWISE SPECIFIED

DIMENSIONS ARE IN INCHES
DIMENSIONS AND SURFACE TEXTURE DESIGNATIONS APPLY PRIOR TO FINISH

DEBURR AND BREAK ALL SHARP EDGES 0.005 - 0.015

REFERENCE

DRAWING: F:\Website\GEARBOXES\RA\RA450HRXXCXXO4N
NUMBER:

MATERIAL: T304 EXTERIOR, 17-4 H1150 SHAFT
FINISH: #4 LINE

GENERAL TOLERANCES:

.X = ± 0.015
.XX = ± 0.010
.XXX = ± 0.005

FRACTIONAL = $\pm 1/64$
ANGULAR = $\pm 1/2^\circ$

STAINLESS MOTORS INC.

DRAWN: RSC

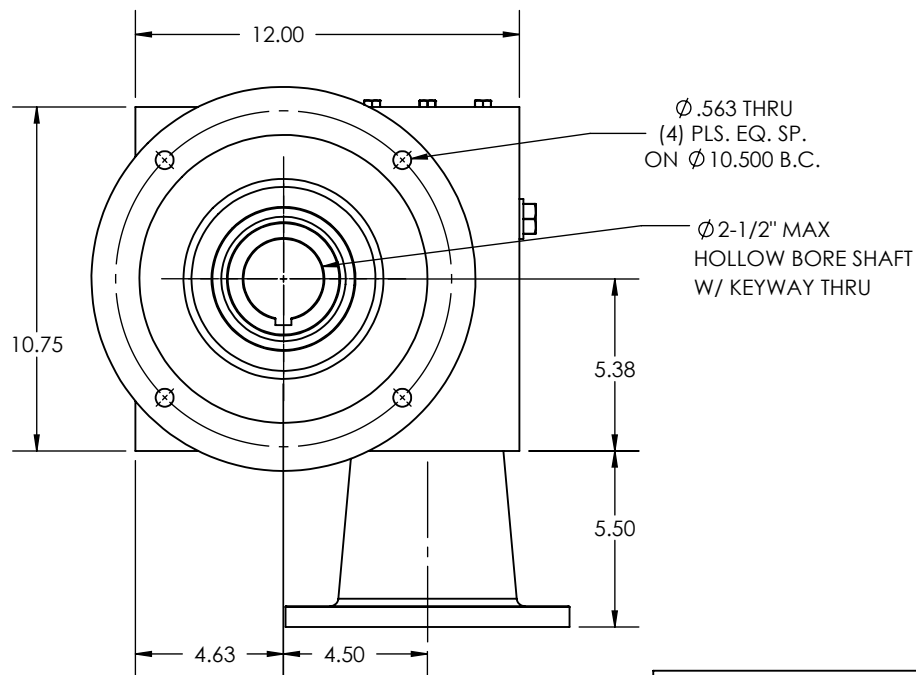
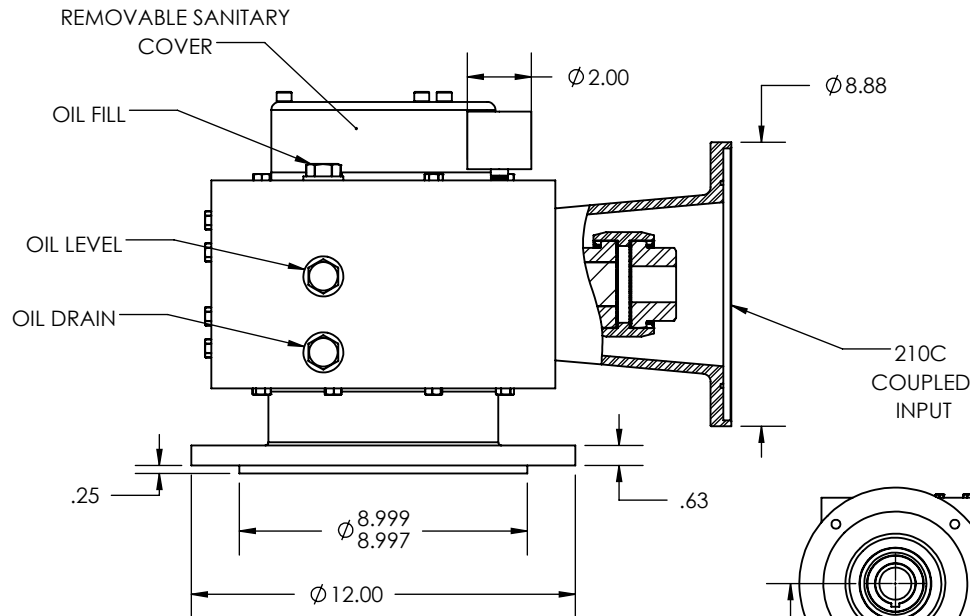
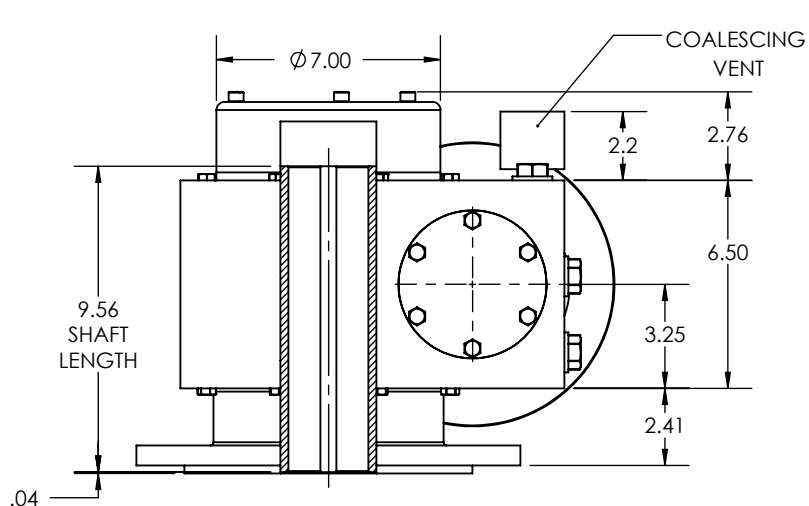
CHECK:

ENG: JO

DATE: 9/26/2017

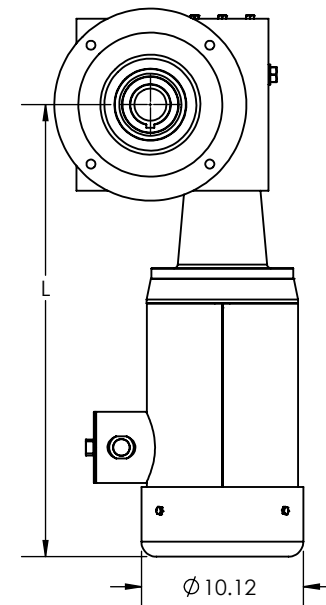
RA450, 4N MOUNTING, FLANGED OUTPUT, HOLLOW BORE SHAFT, 210C QUILL INPUT

REVISIONS			
REV.	DESCRIPTION	BY	DATE



REDUCTION RATIO	L				
	2 HP	3 HP	5 HP	7-1/2 HP	10 HP
5	---	---	---	---	28.25
7.5	---	---	---	28.25	---
10	---	---	---	28.25	---
15	---	---	28.25	---	---
20	---	---	28.25	---	---
25	---	23.65*	---	---	---
30	---	23.65*	---	---	---
40	---	23.65*	---	---	---
50	23.65*	---	---	---	---
60	23.65*	---	---	---	---

NOTE: VALUES FOR 210C; 4 POLE; TEFC MOTORS
*180TC FRAME W/ Ø8.46 SHROUD



- OTHER SHAFT SIZES AVAILABLE
- OTHER FLANGE SIZES AVAILABLE
- OTHER OUTPUT SHAFT ATTACHMENT OPTIONS AVAILABLE

NOTES:

THIS DRAWING CONTAINS INFORMATION WHICH IS PROPRIETARY AND CONFIDENTIAL TO STAINLESS MOTORS, INC., AND IS TRANSMITTED IN CONFIDENCE. THE REPRODUCTION, USE OR DISCLOSURE, IN WHOLE OR IN PART, OF THE DESIGN CONTAINED HEREIN TO OTHERS IS PROHIBITED WITHOUT THE WRITTEN CONSENT OF STAINLESS MOTORS, INC.

© COPYRIGHT STAINLESS MOTORS, INC. ALL RIGHTS RESERVED. YEAR OF COPYRIGHT IS FIRST YEAR INDICATED ON THE DRAWING.

DO NOT SCALE DRAWING

UNLESS OTHERWISE SPECIFIED

DIMENSIONS ARE IN INCHES

DIMENSIONS AND SURFACE TEXTURE DESIGNATIONS APPLY PRIOR TO FINISH

DEBURR AND BREAK ALL SHARP EDGES 0.005 - 0.015

REFERENCE

DRAWING: F:\Website\GEARBOXES\RA\RA450HRXXGXXXO4N

MATERIAL: T304 EXTERIOR, 17-4 H1150 SHAFT #4 LINE

GENERAL TOLERANCES:

.X = +/- 0.015
.XX = +/- 0.010
.XXX = +/- 0.005

FRACTIONAL = +/- 1/64
ANGULAR = +/- 1/2°

STAINLESS MOTORS INC.

DRAWN: RSC

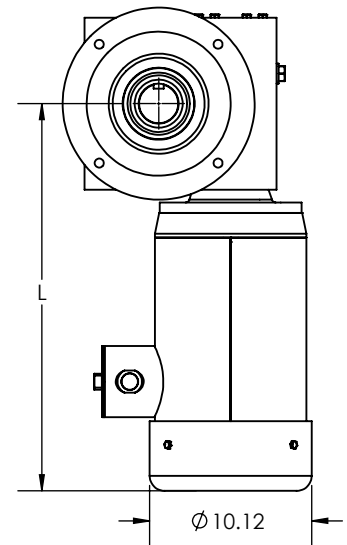
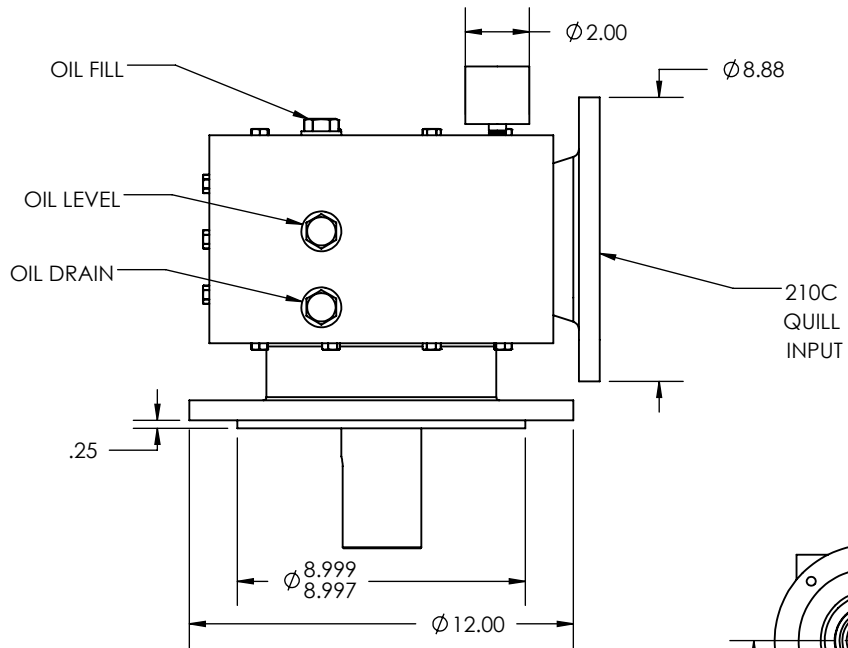
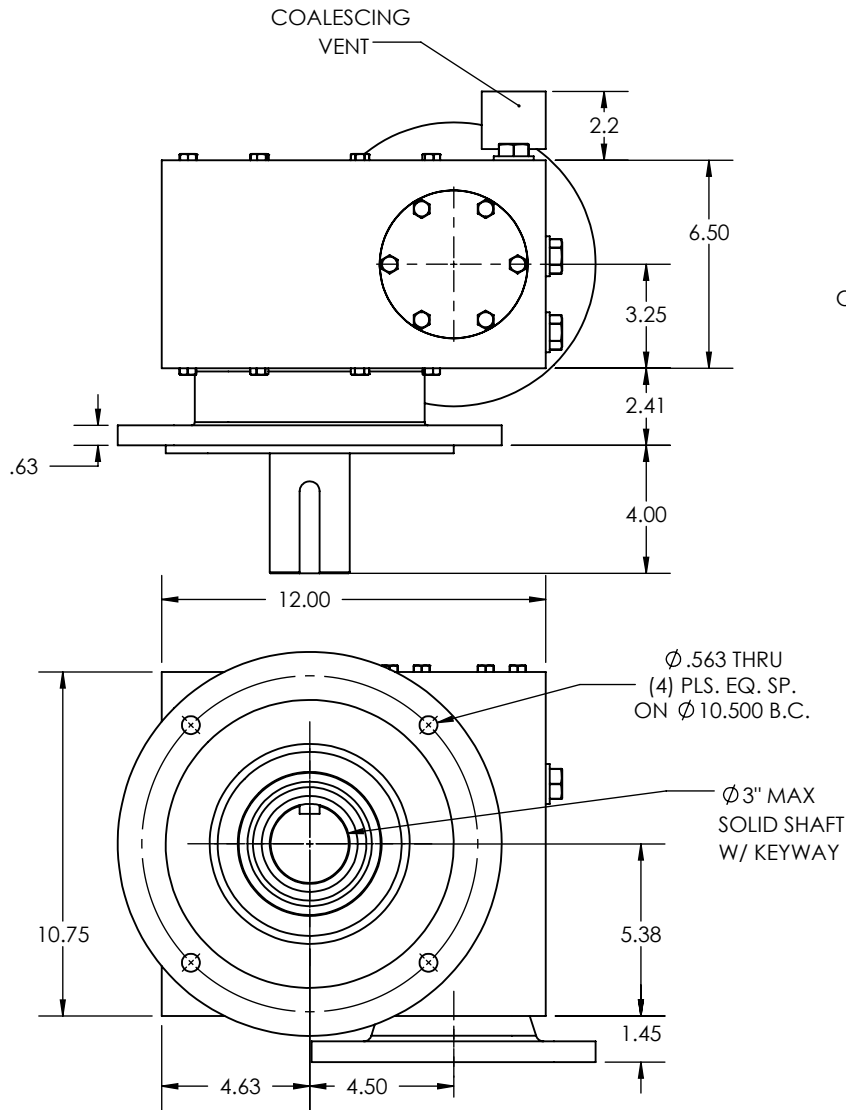
CHECK: RSC

ENG: JO

DATE: 9/26/2017

RA450, 4N MOUNTING, FLANGED OUTPUT, HOLLOW BORE SHAFT, 210C COUPLED INPUT

REVISIONS			
REV.	DESCRIPTION	BY	DATE



REDUCTION RATIO	L				
	2 HP	3 HP	5 HP	7-1/2 HP	10 HP
5	---	---	---	---	24.20
7.5	---	---	---	24.20	---
10	---	---	---	24.20	---
15	---	---	24.20	---	---
20	---	---	24.20	---	---
25	---	19.60*	---	---	---
30	---	19.60*	---	---	---
40	---	19.60*	---	---	---
50	19.60*	---	---	---	---
60	19.60*	---	---	---	---

NOTE: VALUES FOR 210C; 4 POLE; TEFC MOTORS
*180TC FRAME W/ Ø8.46 SHROUD

1. OTHER SHAFT SIZES AVAILABLE
2. OTHER FLANGE SIZES AVAILABLE

NOTES:

THIS DRAWING CONTAINS INFORMATION WHICH IS PROPRIETARY AND CONFIDENTIAL TO STAINLESS MOTORS, INC., AND IS TRANSMITTED IN CONFIDENCE. THE REPRODUCTION, USE OR DISCLOSURE, IN WHOLE OR IN PART, OF THE DESIGN CONTAINED HEREIN TO OTHERS IS PROHIBITED WITHOUT THE WRITTEN CONSENT OF STAINLESS MOTORS, INC.

© COPYRIGHT STAINLESS MOTORS, INC. ALL RIGHTS RESERVED. YEAR OF COPYRIGHT IS FIRST YEAR INDICATED ON THE DRAWING.

DO NOT SCALE DRAWING

UNLESS OTHERWISE SPECIFIED

DIMENSIONS ARE IN INCHES

DIMENSIONS AND SURFACE TEXTURE DESIGNATIONS APPLY PRIOR TO FINISH

DEBURR AND BREAK ALL SHARP EDGES 0.005 - 0.015

REFERENCE

DRAWING: F:\Website\GEARBOXES\RA\RA450SRXXCXXXO4N

MATERIAL: T304 EXTERIOR,
17-4 H1150 SHAFT
FINISH: #4 LINE

GENERAL TOLERANCES:

.X = +/- 0.015
.XX = +/- 0.010
.XXX = +/- 0.005

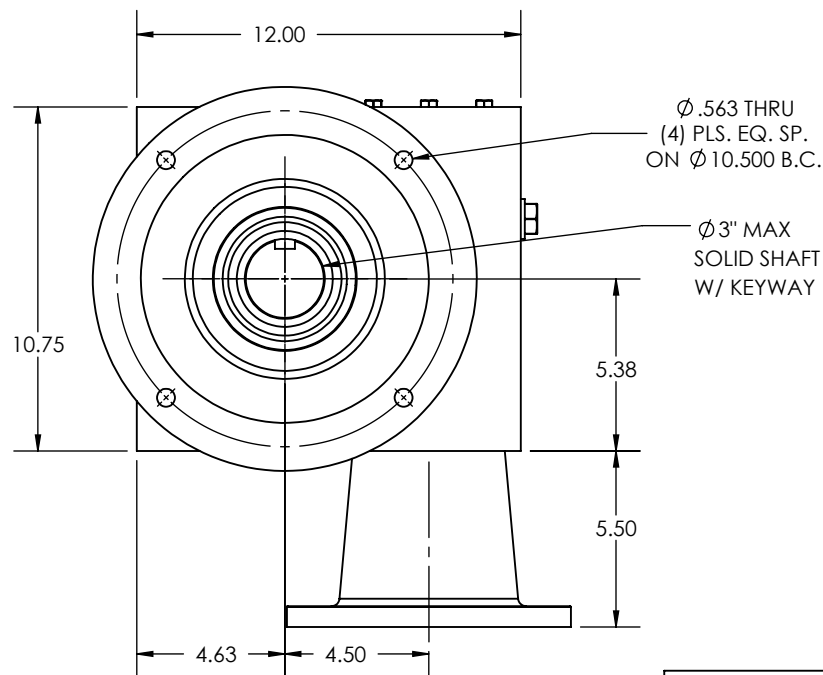
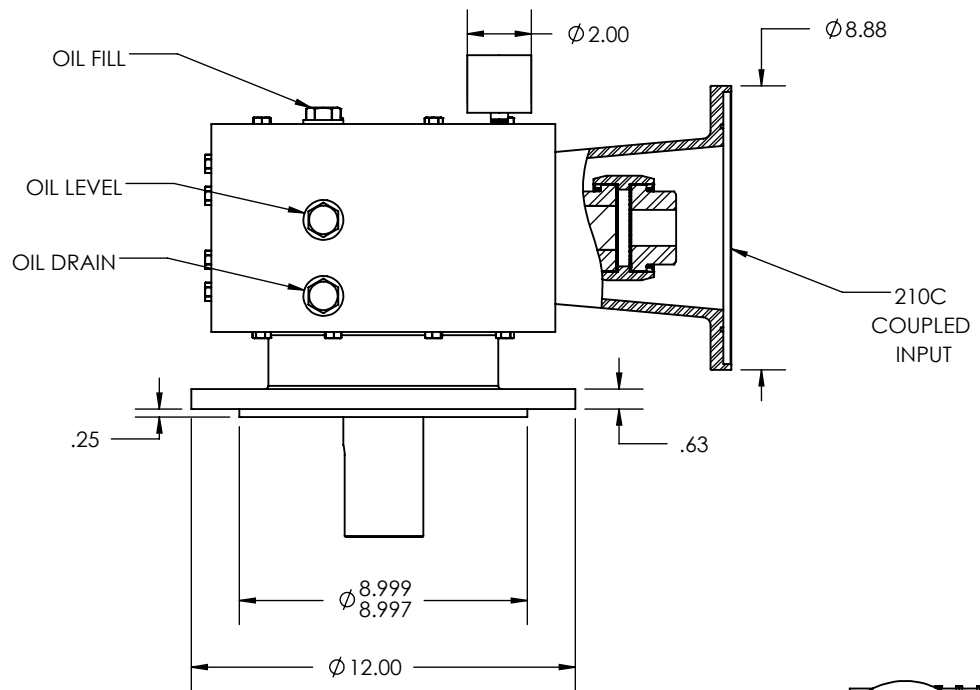
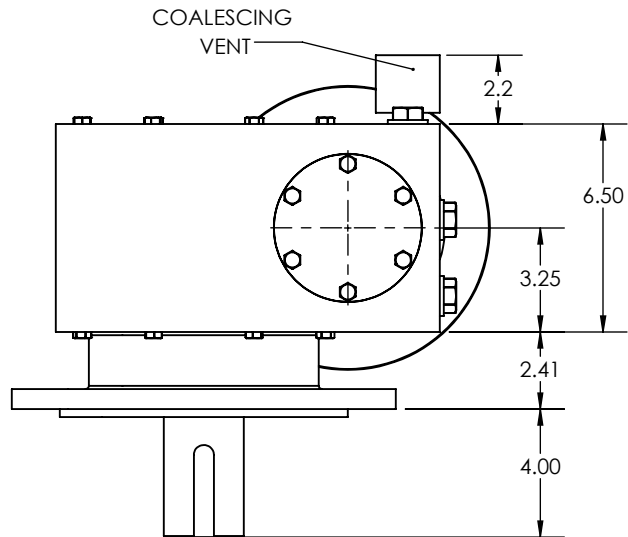
FRACTIONAL = +/- 1/64
ANGULAR = +/- 1/2°

**STAINLESS
MOTORS INC.**

DRAWN: RSC
CHECK:
ENG: JO
DATE: 9/26/2017

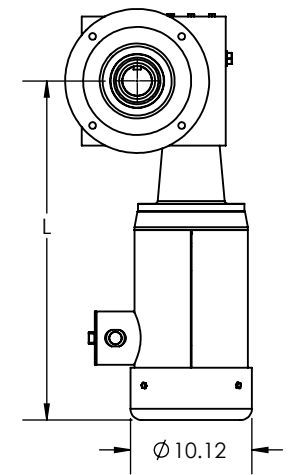
RA450, 4N MOUNTING,
FLANGED OUTPUT,
SOLID SHAFT,
210C QUILL INPUT

REVISIONS			
REV.	DESCRIPTION	BY	DATE



REDUCTION RATIO	L				
	2 HP	3 HP	5 HP	7-1/2 HP	10 HP
5	---	---	---	---	28.25
7.5	---	---	---	28.25	---
10	---	---	---	28.25	---
15	---	---	28.25	---	---
20	---	---	28.25	---	---
25	---	23.65*	---	---	---
30	---	23.65*	---	---	---
40	---	23.65*	---	---	---
50	23.65*	---	---	---	---
60	23.65*	---	---	---	---

NOTE: VALUES FOR 210C; 4 POLE; TEFC MOTORS
*180TC FRAME W/ Ø8.46 SHROUD



1. OTHER SHAFT SIZES AVAILABLE
2. OTHER FLANGE SIZES AVAILABLE

NOTES:

THIS DRAWING CONTAINS INFORMATION WHICH IS PROPRIETARY AND CONFIDENTIAL TO STAINLESS MOTORS, INC., AND IS TRANSMITTED IN CONFIDENCE. THE REPRODUCTION, USE OR DISCLOSURE, IN WHOLE OR IN PART, OF THE DESIGN CONTAINED HEREIN TO OTHERS IS PROHIBITED WITHOUT THE WRITTEN CONSENT OF STAINLESS MOTORS, INC.

© COPYRIGHT STAINLESS MOTORS, INC. ALL RIGHTS RESERVED. YEAR OF COPYRIGHT IS FIRST YEAR INDICATED ON THE DRAWING.

DO NOT SCALE DRAWING
UNLESS OTHERWISE SPECIFIED

DIMENSIONS ARE IN INCHES
DIMENSIONS AND SURFACE
TEXTURE DESIGNATIONS
APPLY PRIOR TO FINISH

DEBURR AND BREAK ALL
SHARP EDGES 0.005 - 0.015

REFERENCE

DRAWING: F:\Website\GEARBOXES\RA\RA450SXXGXXXO4N
NUMBER:

MATERIAL: T304 EXTERIOR,
17-4 H1150 SHAFT
FINISH: #4 LINE

GENERAL TOLERANCES:

.X = +/- 0.015
.XX = +/- 0.010
.XXX = +/- 0.005

FRACTIONAL = +/- 1/64
ANGULAR = +/- 1/2°

**STAINLESS
MOTORS INC.**

DRAWN: RSC

CHECK:

ENG: JO

DATE: 9/26/2017

RA450, 4N MOUNTING,
FLANGED OUTPUT,
SOLID SHAFT,
210C COUPLED INPUT