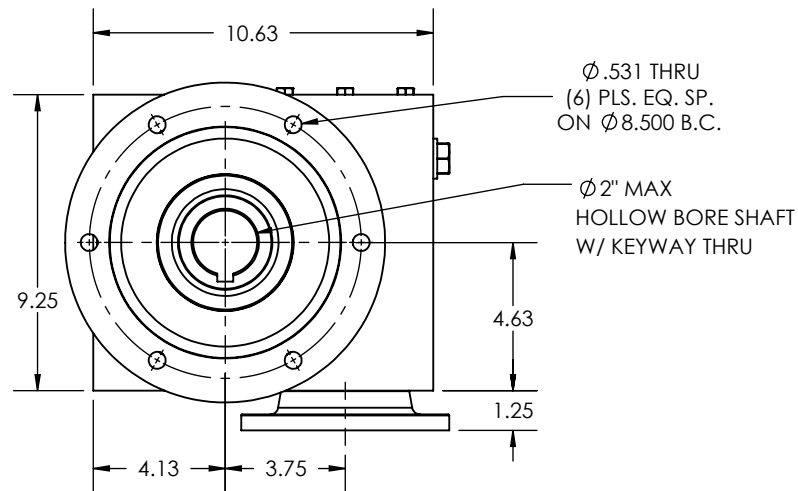
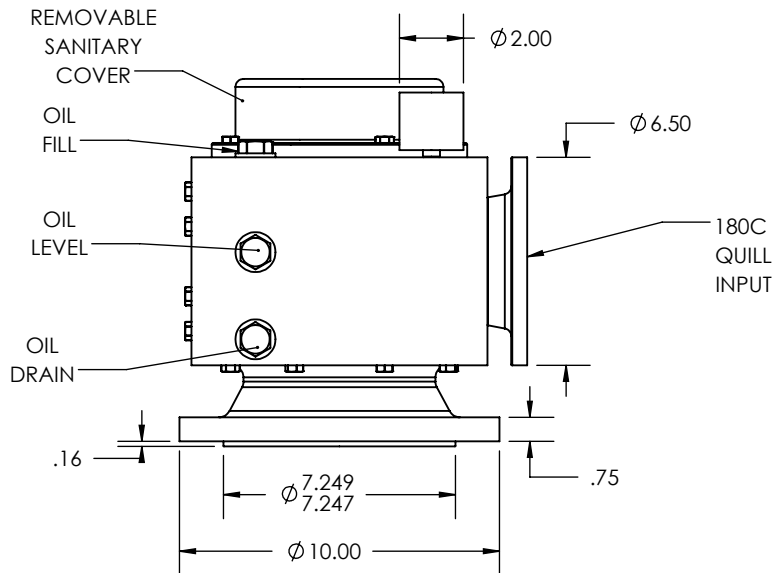
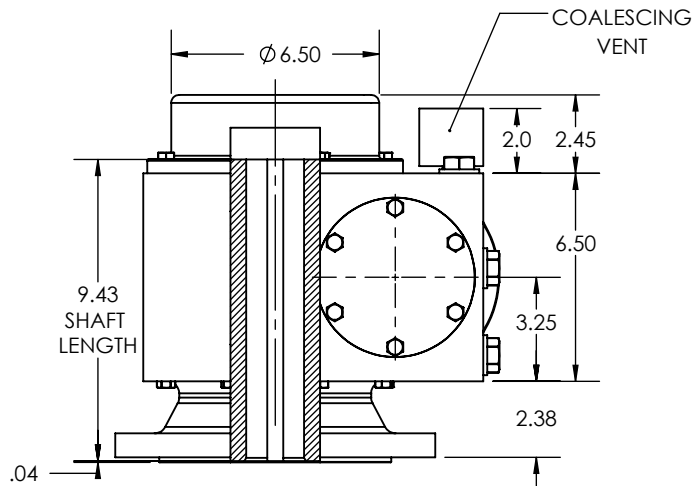


REVISIONS			
REV.	DESCRIPTION	BY	DATE

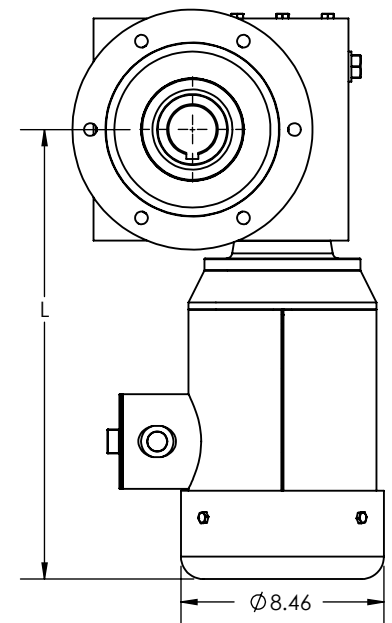


REDUCTION RATIO	L				
	1-1/2 HP	2 HP	3 HP	5 HP	7-1/2 HP
5	---	---	---	---	24.00**
7.5	---	---	---	20.73	---
10	---	---	---	20.73	---
15	---	---	18.73	---	---
20	---	---	18.73	---	---
25	---	18.73	---	---	---
30	---	18.73	---	---	---
40	18.73*	---	---	---	---
50	18.73*	---	---	---	---
60	18.73*	---	---	---	---

NOTE: VALUES FOR 180C; 4 POLE; TEFC MOTORS

*140 FRAME

**210C FRAME W/ Ø 10.12 SHROUD



- OTHER SHAFT SIZES AVAILABLE
- OTHER FLANGE SIZES AVAILABLE
- OTHER OUTPUT SHAFT ATTACHMENT OPTIONS AVAILABLE

NOTES:

THIS DRAWING CONTAINS INFORMATION WHICH IS PROPRIETARY AND CONFIDENTIAL TO STAINLESS MOTORS, INC., AND IS TRANSMITTED IN CONFIDENCE. THE REPRODUCTION, USE OR DISCLOSURE, IN WHOLE OR IN PART, OF THE DESIGN CONTAINED HEREIN TO OTHERS IS PROHIBITED WITHOUT THE WRITTEN CONSENT OF STAINLESS MOTORS, INC.

© COPYRIGHT STAINLESS MOTORS, INC. ALL RIGHTS RESERVED. YEAR OF COPYRIGHT IS FIRST YEAR INDICATED ON THE DRAWING.

DO NOT SCALE DRAWING

UNLESS OTHERWISE SPECIFIED

DIMENSIONS ARE IN INCHES

DIMENSIONS AND SURFACE TEXTURE DESIGNATIONS APPLY PRIOR TO FINISH

DEBURR AND BREAK ALL SHARP EDGES 0.005 - 0.015

REFERENCE

DRAWING: F:\Website\GEARBOXES\RA\RA375HRXXCXXXO4N

MATERIAL: T304 EXTERIOR, 17-4 H1150 SHAFT
FINISH: #4 LINE

GENERAL TOLERANCES:

.X = +/- 0.015
.XX = +/- 0.010
.XXX = +/- 0.005

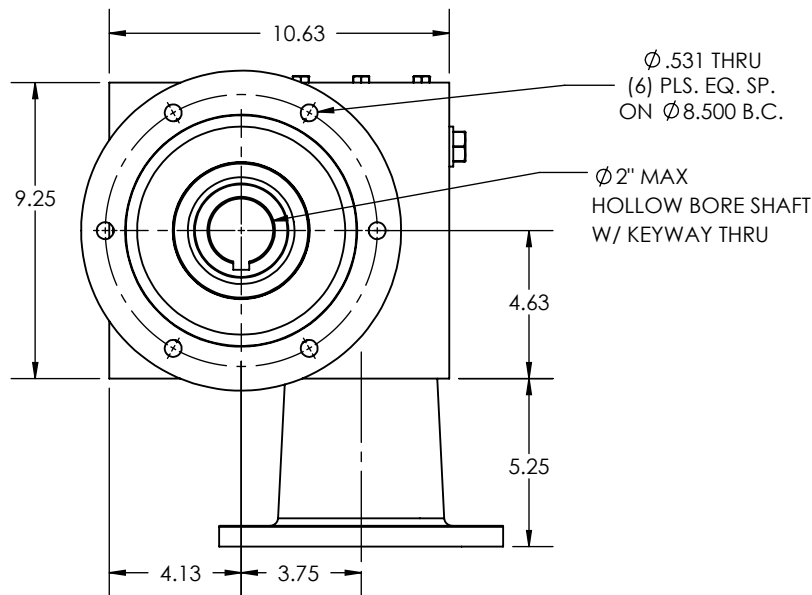
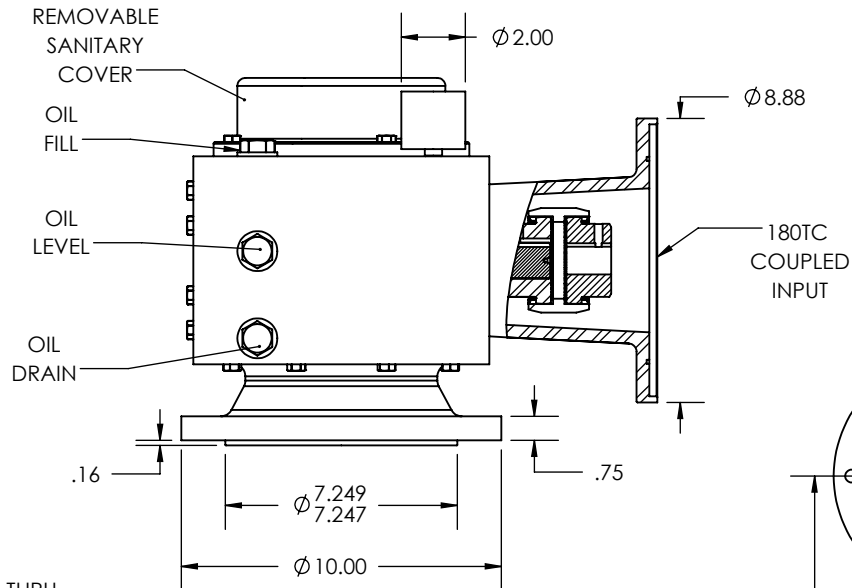
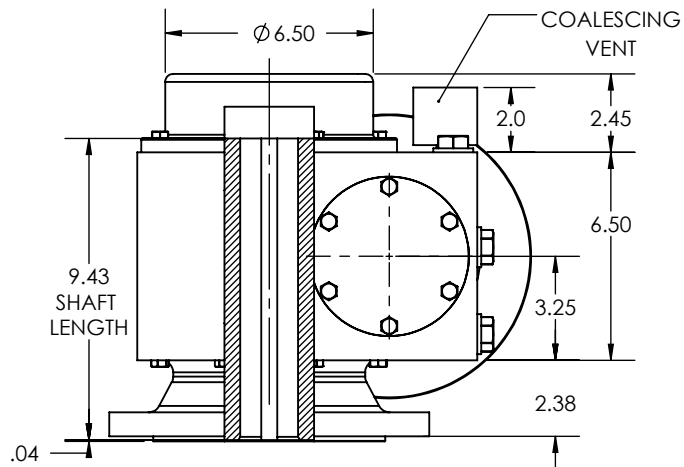
FRACTIONAL = +/- 1/64
ANGULAR = +/- 1/2°

STAINLESS MOTORS INC.

DRAWN: RSC
CHECK:
ENG: JO
DATE: 9/22/2017

RA375, 4N MOUNTING, FLANGE OUTPUT, HOLLOW BORE SHAFT, 180C QUILL INPUT

REVISIONS			
REV.	DESCRIPTION	BY	DATE

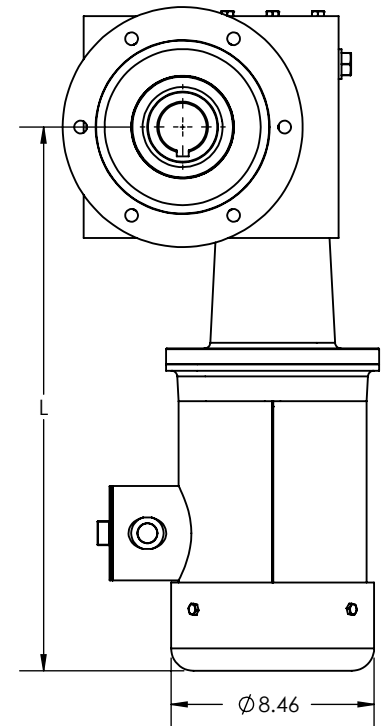


REDUCTION RATIO	L				
	1-1/2 HP	2 HP	3 HP	5 HP	7-1/2 HP
5	---	---	---	---	27.26**
7.5	---	---	---	24.65	---
10	---	---	---	24.65	---
15	---	---	22.65	---	---
20	---	---	22.65	---	---
25	---	22.65	---	---	---
30	---	22.65	---	---	---
40	21.98*	---	---	---	---
50	21.98*	---	---	---	---
60	21.98*	---	---	---	---

NOTE: VALUES FOR 180TC; 4 POLE; TEFC MOTORS

*140TC FRAME W/ $\phi 7.08$ SHROUD

**210C FRAME W/ $\phi 10.12$ SHROUD



- OTHER SHAFT SIZES AVAILABLE
- OTHER FLANGE SIZES AVAILABLE
- OTHER SHAFT OUTPUT ATTACHMENT OPTIONS AVAILABLE

NOTES:

THIS DRAWING CONTAINS INFORMATION WHICH IS PROPRIETARY AND CONFIDENTIAL TO STAINLESS MOTORS, INC., AND IS TRANSMITTED IN CONFIDENCE. THE REPRODUCTION, USE OR DISCLOSURE, IN WHOLE OR IN PART, OF THE DESIGN CONTAINED HEREIN TO OTHERS IS PROHIBITED WITHOUT THE WRITTEN CONSENT OF STAINLESS MOTORS, INC.

© COPYRIGHT STAINLESS MOTORS, INC. ALL RIGHTS RESERVED. YEAR OF COPYRIGHT IS FIRST YEAR INDICATED ON THE DRAWING.

DO NOT SCALE DRAWING
UNLESS OTHERWISE SPECIFIED

DIMENSIONS ARE IN INCHES
DIMENSIONS AND SURFACE TEXTURE DESIGNATIONS APPLY PRIOR TO FINISH

DEBURR AND BREAK ALL SHARP EDGES 0.005 - 0.015

REFERENCE DRAWING:
DRAWING NUMBER: F:\Website\GEARBOXES\RA\RA375SHRXXGXXXO4N

MATERIAL: T304 EXTERIOR, 17-4 H1150 SHAFT
FINISH: #4 LINE

GENERAL TOLERANCES:

.X = ± 0.015
.XX = ± 0.010
.XXX = ± 0.005

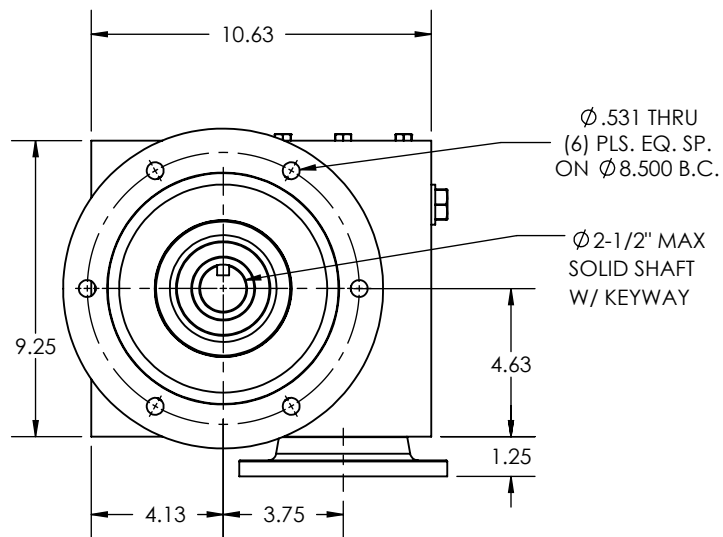
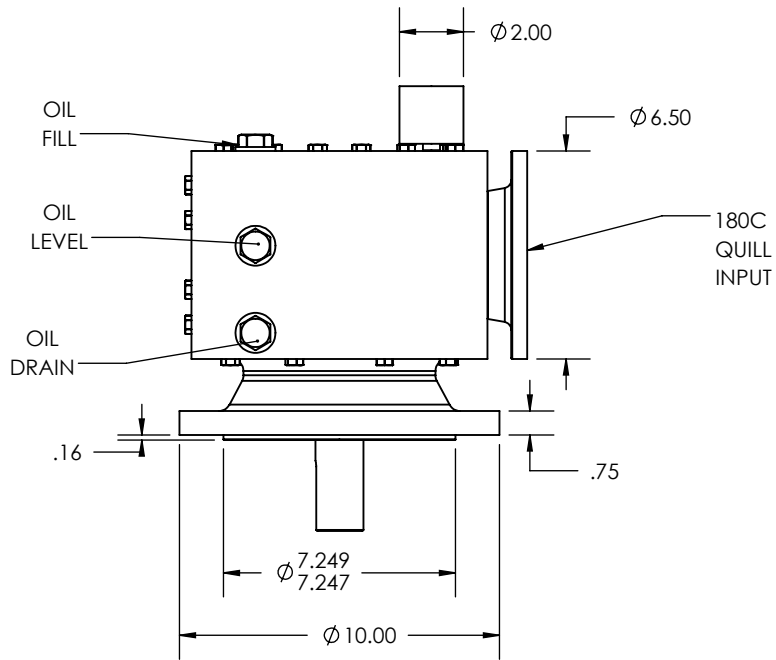
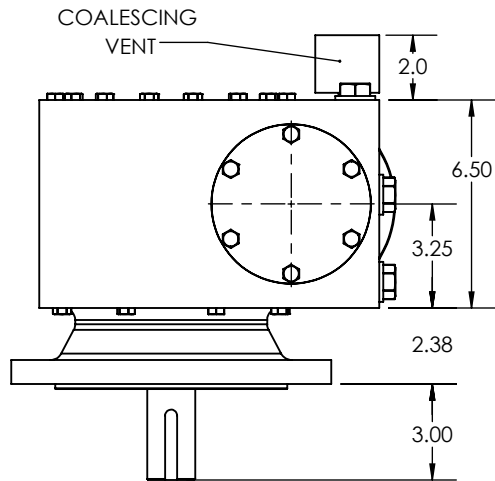
FRACTIONAL = $\pm 1/64$
ANGULAR = $\pm 1/2^\circ$

STAINLESS MOTORS INC.

DRAWN: RSC
CHECK:
ENG: JO
DATE: 9/22/2017

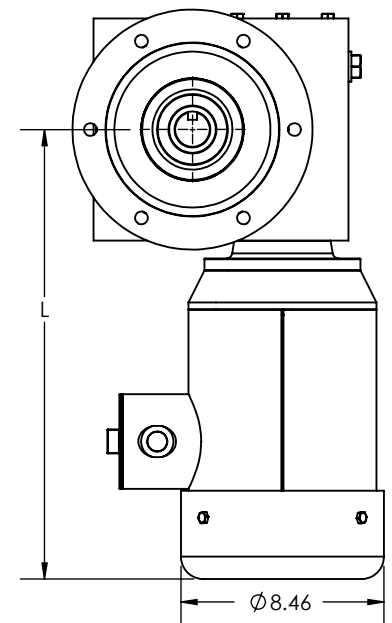
RA375, 4N MOUNTING, FLANGED OUTPUT, HOLLOW BORE SHAFT, 180TC COUPLED INPUT

REVISIONS			
REV.	DESCRIPTION	BY	DATE



REDUCTION RATIO	L				
	1-1/2 HP	2 HP	3 HP	5 HP	7-1/2 HP
5	---	---	---	---	24.00**
7.5	---	---	---	20.73	---
10	---	---	---	20.73	---
15	---	---	18.73	---	---
20	---	---	18.73	---	---
25	---	18.73	---	---	---
30	---	18.73	---	---	---
40	18.73*	---	---	---	---
50	18.73*	---	---	---	---
60	18.73*	---	---	---	---

NOTE: VALUES FOR 180C; 4 POLE; TEFC MOTORS
 *140 FRAME
 **2 POLE ONLY



- OTHER SHAFT SIZES AVAILABLE
- OTHER FLANGE SIZES AVAILABLE

NOTES:

THIS DRAWING CONTAINS INFORMATION WHICH IS PROPRIETARY AND CONFIDENTIAL TO STAINLESS MOTORS, INC., AND IS TRANSMITTED IN CONFIDENCE. THE REPRODUCTION, USE OR DISCLOSURE, IN WHOLE OR IN PART, OF THE DESIGN CONTAINED HEREIN TO OTHERS IS PROHIBITED WITHOUT THE WRITTEN CONSENT OF STAINLESS MOTORS, INC.

© COPYRIGHT STAINLESS MOTORS, INC. ALL RIGHTS RESERVED. YEAR OF COPYRIGHT IS FIRST YEAR INDICATED ON THE DRAWING.

DO NOT SCALE DRAWING
 UNLESS OTHERWISE SPECIFIED

DIMENSIONS ARE IN INCHES
 DIMENSIONS AND SURFACE TEXTURE DESIGNATIONS APPLY PRIOR TO FINISH

DEBURR AND BREAK ALL SHARP EDGES 0.005 - 0.015

REFERENCE DRAWING: F:\Website\GEARBOXES\RA\RA375SRXXCXXXO4N

MATERIAL: T304 EXTERIOR, 17-4 H1150 SHAFT
 FINISH: #4 LINE

GENERAL TOLERANCES:

.X = +/-0.015
 .XX = +/-0.010
 .XXX = +/-0.005

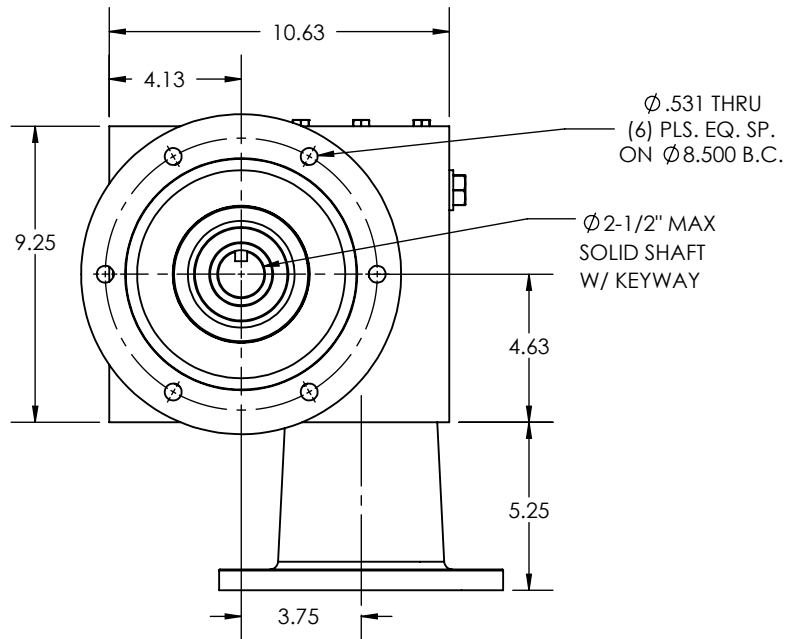
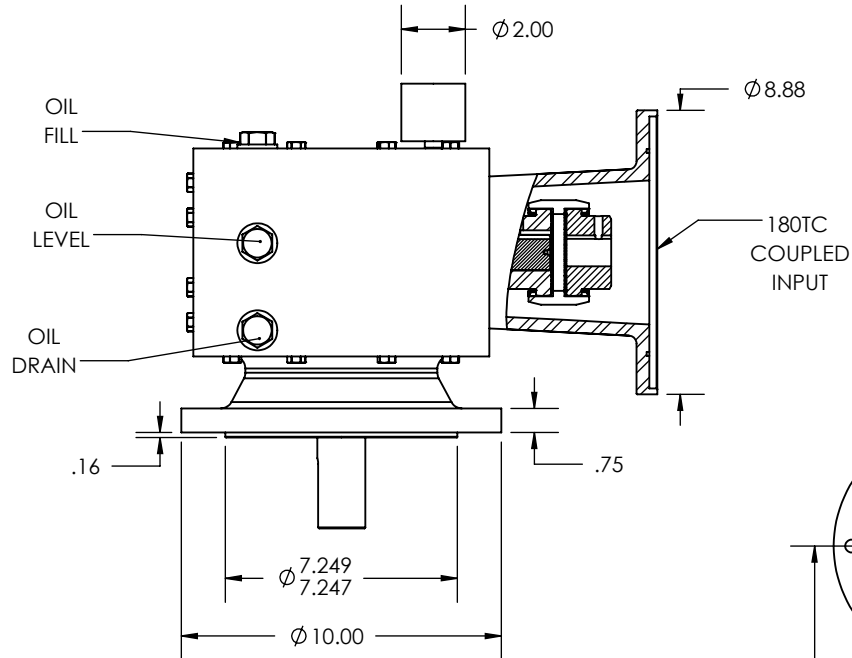
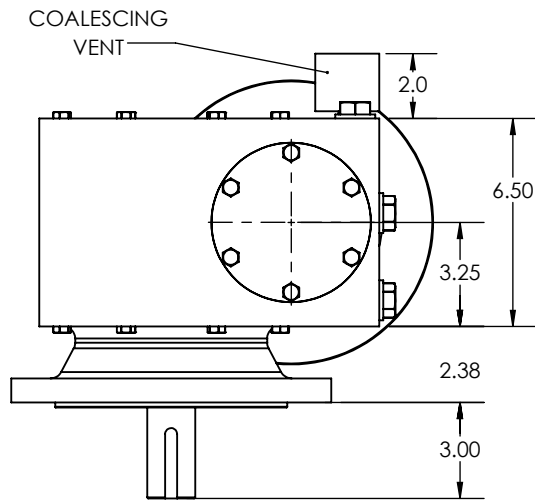
FRACTIONAL = +/- 1/64
 ANGULAR = +/- 1/2°

STAINLESS MOTORS INC.

DRAWN: RSC
 CHECK:
 ENG: JO
 DATE: 9/22/2017

RA375, 4N MOUNTING, FLANGE OUTPUT, SOLID SHAFT, 180C QUILL INPUT

REVISIONS			
REV.	DESCRIPTION	BY	DATE

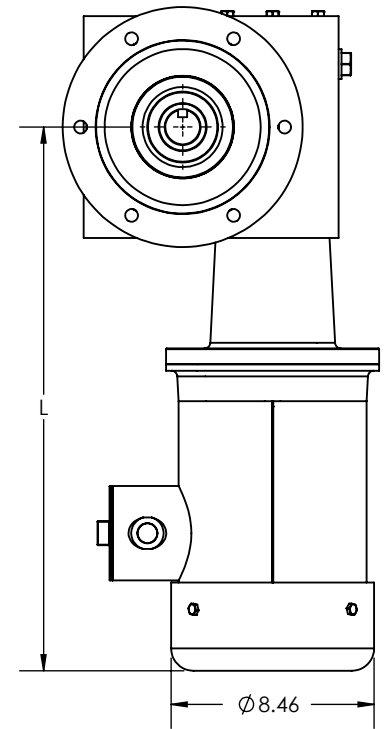


REDUCTION RATIO	L				
	1-1/2 HP	2 HP	3 HP	5 HP	7-1/2 HP
5	---	---	---	---	27.26**
7.5	---	---	---	24.65	---
10	---	---	---	24.65	---
15	---	---	22.65	---	---
20	---	---	22.65	---	---
25	---	22.65	---	---	---
30	---	22.65	---	---	---
40	21.98*	---	---	---	---
50	21.98*	---	---	---	---
60	21.98*	---	---	---	---

NOTE: VALUES FOR 180TC; 4 POLE; TEFC MOTORS

*140TC FRAME W/ Ø 7.08 SHROUD

**210C FRAME W/ Ø 10.12 SHROUD



- OTHER SHAFT SIZES AVAILABLE
- OTHER FLANGE SIZES AVAILABLE
- OTHER SHAFT ATTACHMENT OPTIONS AVAILABLE

NOTES:

THIS DRAWING CONTAINS INFORMATION WHICH IS PROPRIETARY AND CONFIDENTIAL TO STAINLESS MOTORS, INC., AND IS TRANSMITTED IN CONFIDENCE. THE REPRODUCTION, USE OR DISCLOSURE, IN WHOLE OR IN PART, OF THE DESIGN CONTAINED HEREIN TO OTHERS IS PROHIBITED WITHOUT THE WRITTEN CONSENT OF STAINLESS MOTORS, INC.

© COPYRIGHT STAINLESS MOTORS, INC. ALL RIGHTS RESERVED. YEAR OF COPYRIGHT IS FIRST YEAR INDICATED ON THE DRAWING.

DO NOT SCALE DRAWING

UNLESS OTHERWISE SPECIFIED

DIMENSIONS ARE IN INCHES

DIMENSIONS AND SURFACE TEXTURE DESIGNATIONS APPLY PRIOR TO FINISH

DEBURR AND BREAK ALL SHARP EDGES 0.005 - 0.015

REFERENCE

DRAWING:

NUMBER: F:\Website\GEARBOXES\RA\RA375SRXXGXXXO4N

MATERIAL: T304 EXTERIOR, 17-4 H1150 SHAFT
FINISH: #4 LINE

GENERAL TOLERANCES:

.X = +/- 0.015
.XX = +/- 0.010
.XXX = +/- 0.005

FRACTIONAL = +/- 1/64
ANGULAR = +/- 1/2°

**STAINLESS
MOTORS INC.**

DRAWN: RSC

CHECK:

ENG: JO

DATE: 9/22/2017

RA375, 4N MOUNTING,
FLANGED OUTPUT,
HOLLOW BORE SHAFT,
180TC COUPLED INPUT