

REDUCTION RATIO	L				
	1/2 HP	1 HP	1-1/2 HP	2 HP	3 HP
5	---	---	---	---	17.35
7.5	---	---	---	17.35	17.35
10	---	---	17.35	17.35	---
15	---	---	17.35	---	---
20	---	16.85	17.35	---	---
25	---	16.85	17.35	---	---
30	---	16.85	---	---	---
40	---	16.85	---	---	---
50	14.85	---	---	---	---
60	14.85	---	---	---	---

NOTE: VALUES FOR 56C, 143TC, 145TC; 4 POLE; TEFC MOTORS

- OTHER SHAFT SIZES AVAILABLE
- OTHER SHAFT ATTACHMENT OPTIONS AVAILABLE
- OTHER MOUNTING ORIENTATIONS AVAILABLE

NOTES:

THIS DRAWING CONTAINS INFORMATION WHICH IS PROPRIETARY AND CONFIDENTIAL TO STAINLESS MOTORS, INC., AND IS TRANSMITTED IN CONFIDENCE. THE REPRODUCTION, USE OR DISCLOSURE, IN WHOLE OR IN PART, OF THE DESIGN CONTAINED HEREIN TO OTHERS IS PROHIBITED WITHOUT THE WRITTEN CONSENT OF STAINLESS MOTORS, INC.

© COPYRIGHT STAINLESS MOTORS, INC. ALL RIGHTS RESERVED. YEAR OF COPYRIGHT IS FIRST YEAR INDICATED ON THE DRAWING.

DO NOT SCALE DRAWING

UNLESS OTHERWISE SPECIFIED

DIMENSIONS ARE IN INCHES
DIMENSIONS AND SURFACE
TEXTURE DESIGNATIONS
APPLY PRIOR TO FINISH

DEBURR AND BREAK ALL
SHARP EDGES 0.005 - 0.015

REFERENCE

DRAWING: F:\Website\GEARBOXES\RA\RA262HRXXCXXO1A
NUMBER:

MATERIAL: T304 EXTERIOR
17-4 H1150 SHAFT
FINISH: #4 LINE

GENERAL TOLERANCES:

.X = ± 0.015
.XX = ± 0.010
.XXX = ± 0.005

FRACTIONAL = $\pm 1/64$
ANGULAR = $\pm 1/2^\circ$

**STAINLESS
MOTORS INC.**

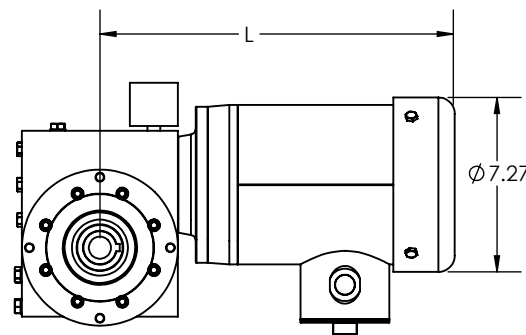
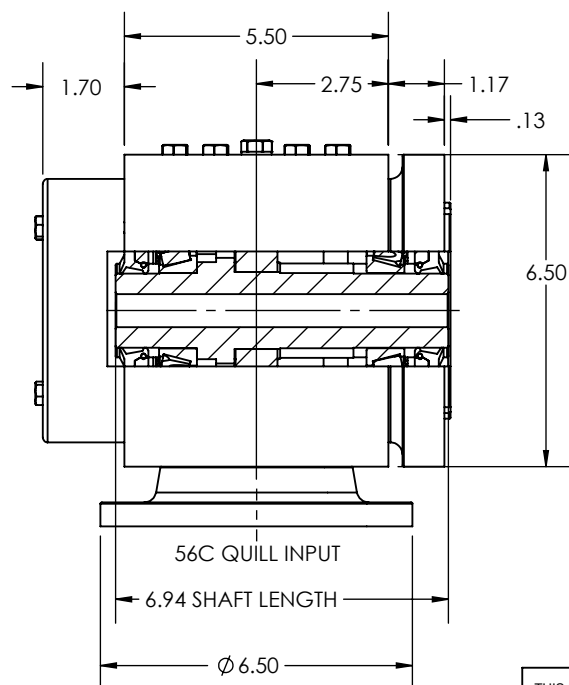
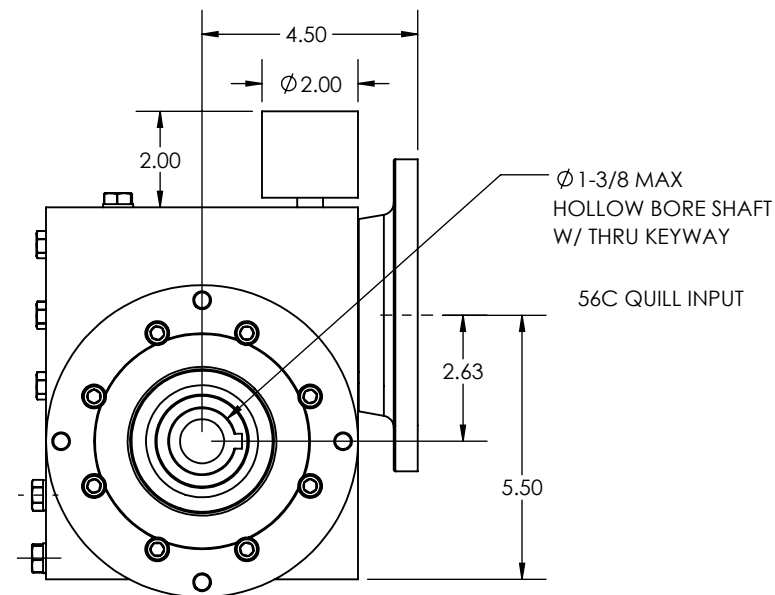
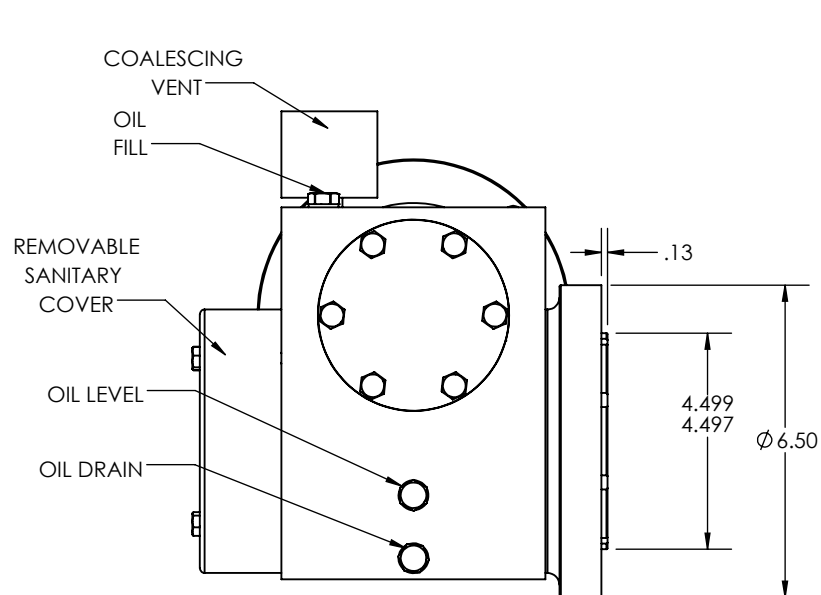
DRAWN: RSC

CHECK: JO

ENG: JO

DATE: 9/19/2017

RA262, HOLLOW BORE
SHAFT, 1A MOUNTING,
56C QUILL INPUT



REDUCTION RATIO	L				
	1/2 HP	1 HP	1-1/2 HP	2 HP	3 HP
5	---	---	---	---	17.35
7.5	---	---	---	17.35	17.35
10	---	---	17.35	17.35	---
15	---	---	17.35	---	---
20	---	16.85	17.35	---	---
25	---	16.85	17.35	---	---
30	---	16.85	---	---	---
40	---	16.85	---	---	---
50	14.85	---	---	---	---
60	14.85	---	---	---	---

NOTE: VALUES FOR 56C, 143TC, 145TC; 4 POLE; TEFC MOTORS

1. OTHER SHAFT SIZES AVAILABLE
2. OTHER FLANGE SIZES AVAILABLE
3. OTHER SHAFT ATTACHMENT OPTIONS AVAILABLE

NOTES:

THIS DRAWING CONTAINS INFORMATION WHICH IS PROPRIETARY AND CONFIDENTIAL TO STAINLESS MOTORS, INC., AND IS TRANSMITTED IN CONFIDENCE. THE REPRODUCTION, USE OR DISCLOSURE, IN WHOLE OR IN PART, OF THE DESIGN CONTAINED HEREIN TO OTHERS IS PROHIBITED WITHOUT THE WRITTEN CONSENT OF STAINLESS MOTORS, INC.

© COPYRIGHT STAINLESS MOTORS, INC. ALL RIGHTS RESERVED. YEAR OF COPYRIGHT IS FIRST YEAR INDICATED ON THE DRAWING.

DO NOT SCALE DRAWING

UNLESS OTHERWISE SPECIFIED

DIMENSIONS ARE IN INCHES
DIMENSIONS AND SURFACE TEXTURE DESIGNATIONS APPLY PRIOR TO FINISH

DEBURR AND BREAK ALL SHARP EDGES 0.005 - 0.015

REFERENCE

DRAWING: F:\Website\GEARBOXES\RA\RA262HRXXCXXO1N
NUMBER:

MATERIAL

T304 EXTERIOR
17-4 H1150 SHAFT
#4 LINE

FINISH:

GENERAL TOLERANCES:
.X = +/- 0.015
.XX = +/- 0.010
.XXX = +/- 0.005

FRACTIONAL = +/- 1/64
ANGULAR = +/- 1/2°

**STAINLESS
MOTORS INC.**

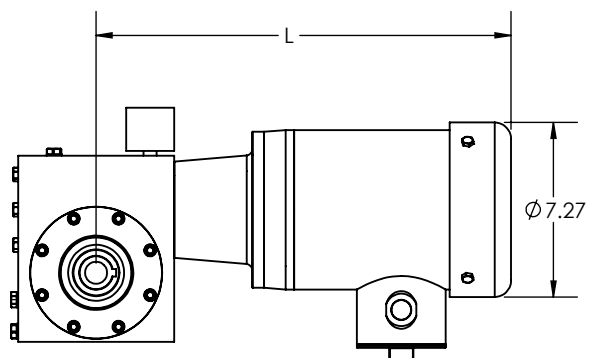
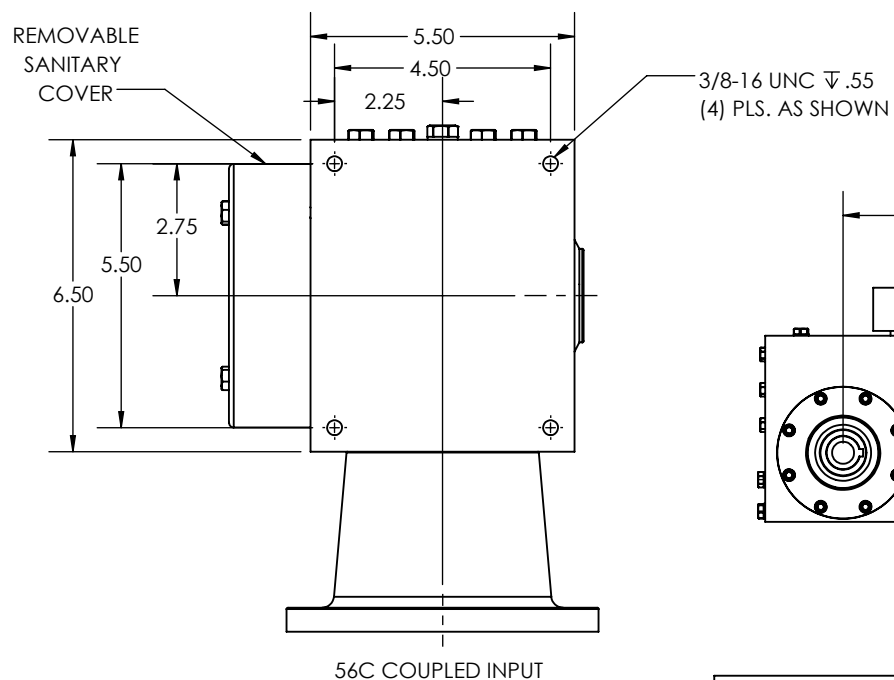
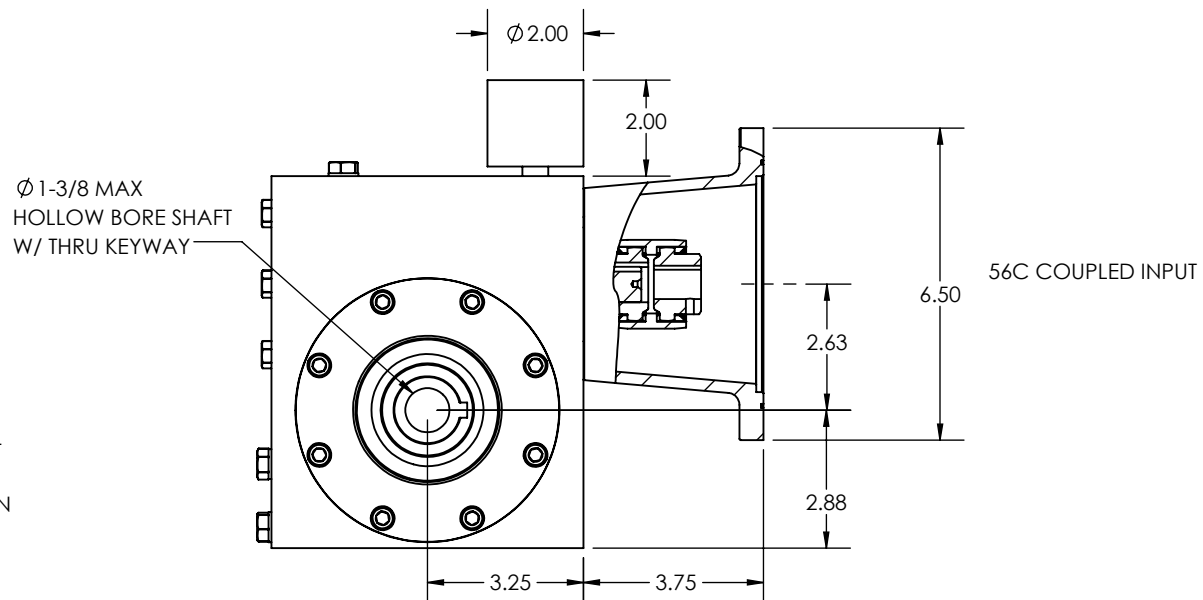
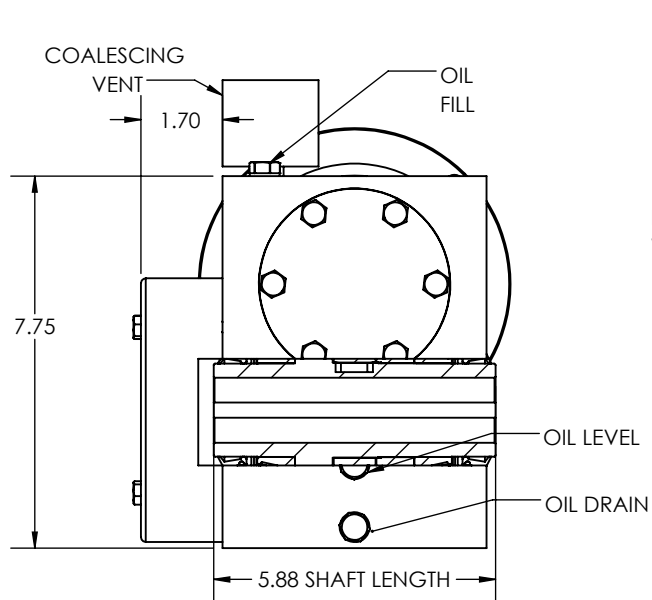
DRAWN: RSC

CHECK:

ENG: JO

DATE: 9/19/2017

RA262, HOLLOW BORE
SHAFT, 1IN MOUNTING,
FLANGED OUTPUT,
56C QUILL INPUT



REDUCTION RATIO	L				
	1/2 HP	1 HP	1-1/2 HP	2 HP	3 HP
5	---	---	---	---	19.85
7.5	---	---	---	19.85	19.85
10	---	---	19.85	19.85	---
15	---	---	19.85	---	---
20	---	19.35	19.85	---	---
25	---	19.35	19.85	---	---
30	---	19.35	---	---	---
40	---	19.35	---	---	---
50	17.35	---	---	---	---
60	17.35	---	---	---	---

NOTE: VALUES FOR 56C, 143TC, 145TC; 4 POLE; TEFC MOTORS

- OTHER SHAFT SIZES AVAILABLE
- OTHER MOUNTING ORIENTATIONS AVAILABLE
- OTHER SHAFT ATTACHMENT OPTIONS AVAILABLE

NOTES:

THIS DRAWING CONTAINS INFORMATION WHICH IS PROPRIETARY AND CONFIDENTIAL TO STAINLESS MOTORS, INC., AND IS TRANSMITTED IN CONFIDENCE. THE REPRODUCTION, USE OR DISCLOSURE, IN WHOLE OR IN PART, OF THE DESIGN CONTAINED HEREIN TO OTHERS IS PROHIBITED WITHOUT THE WRITTEN CONSENT OF STAINLESS MOTORS, INC.

© COPYRIGHT STAINLESS MOTORS, INC. ALL RIGHTS RESERVED. YEAR OF COPYRIGHT IS FIRST YEAR INDICATED ON THE DRAWING.

DO NOT SCALE DRAWING

UNLESS OTHERWISE SPECIFIED

DIMENSIONS ARE IN INCHES
DIMENSIONS AND SURFACE
TEXTURE DESIGNATIONS
APPLY PRIOR TO FINISH

DEBURR AND BREAK ALL
SHARP EDGES 0.005 - 0.015

REFERENCE

DRAWING: F:\Website\GEARBOXES\RA\RA262HRXXGXXXO1A
NUMBER:

MATERIAL

T304 EXTERIOR
17-4 H1150 SHAFT

FINISH:

#4 LINE

GENERAL TOLERANCES:

.X = ± 0.015
.XX = ± 0.010
.XXX = ± 0.005

FRACTIONAL = $\pm 1/64$
ANGULAR = $\pm 1/2^\circ$

**STAINLESS
MOTORS INC.**

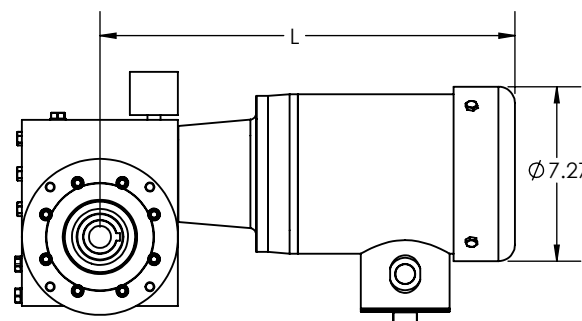
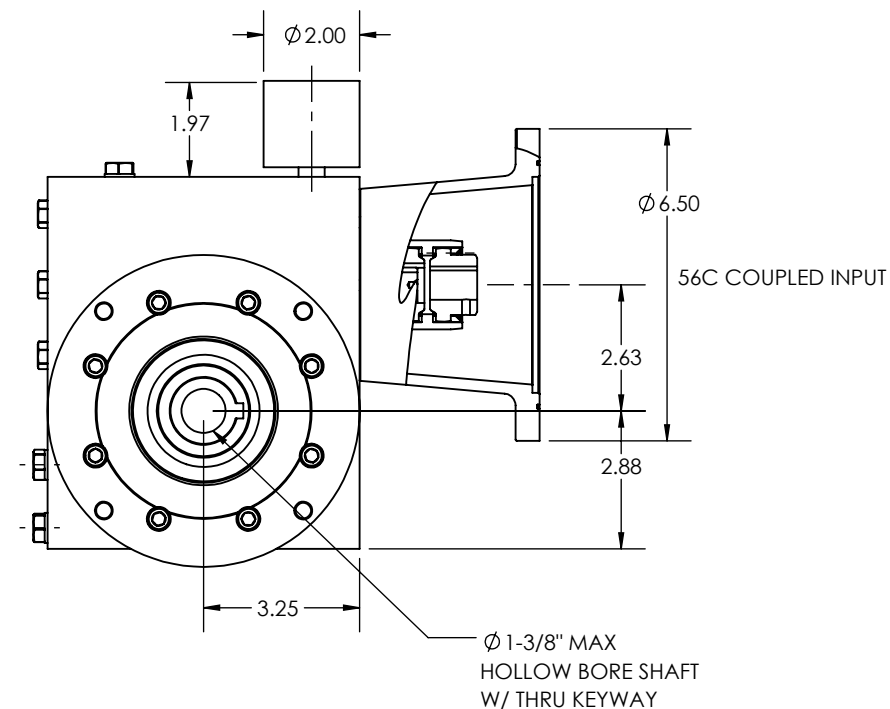
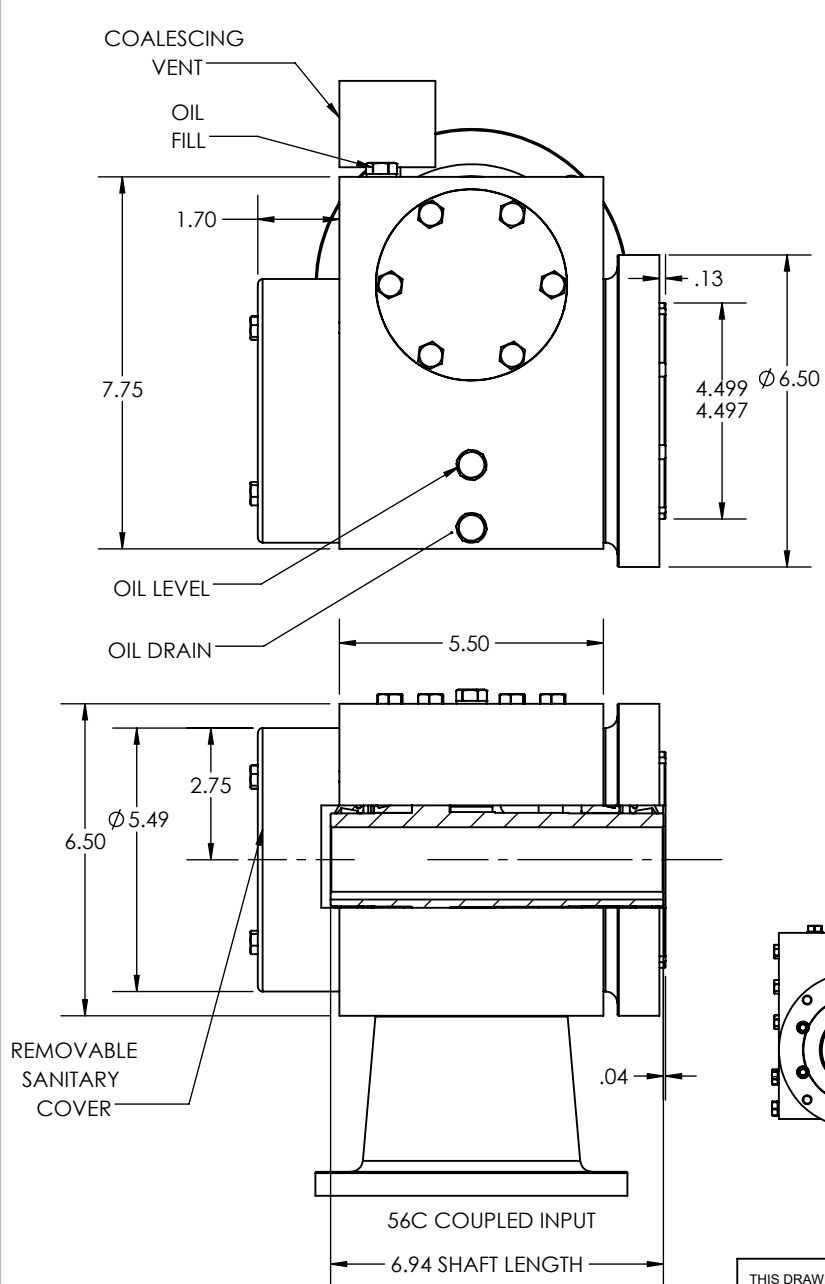
DRAWN: RSC

CHECK:

ENG: JO

DATE: 9/19/2017

RA262, HOLLOW BORE
SHAFT, 1A MOUNTING,
56C COUPLED INPUT



REDUCTION RATIO	L				
	1/2 HP	1 HP	1-1/2 HP	2 HP	3 HP
5	---	---	---	---	19.85
7.5	---	---	---	19.85	19.85
10	---	---	19.85	19.85	---
15	---	---	19.85	---	---
20	---	19.35	19.85	---	---
25	---	19.35	19.85	---	---
30	---	19.35	---	---	---
40	---	19.35	---	---	---
50	17.35	---	---	---	---
60	17.35	---	---	---	---

NOTE: VALUES FOR 56C, 143TC, 145TC; 4 POLE; TEFC MOTORS

1. OTHER SHAFT SIZES AVAILABLE
2. OTHER FLANGE SIZES AVAILABLE
3. OTHER SHAFT ATTACHMENT OPTIONS AVAILABLE

NOTES:

THIS DRAWING CONTAINS INFORMATION WHICH IS PROPRIETARY AND CONFIDENTIAL TO STAINLESS MOTORS, INC., AND IS TRANSMITTED IN CONFIDENCE. THE REPRODUCTION, USE OR DISCLOSURE, IN WHOLE OR IN PART, OF THE DESIGN CONTAINED HEREIN TO OTHERS IS PROHIBITED WITHOUT THE WRITTEN CONSENT OF STAINLESS MOTORS, INC.

© COPYRIGHT STAINLESS MOTORS, INC. ALL RIGHTS RESERVED. YEAR OF COPYRIGHT IS FIRST YEAR INDICATED ON THE DRAWING.

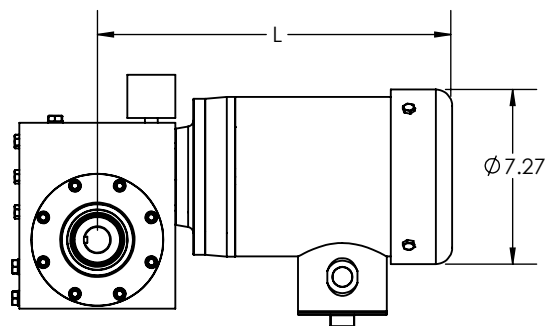
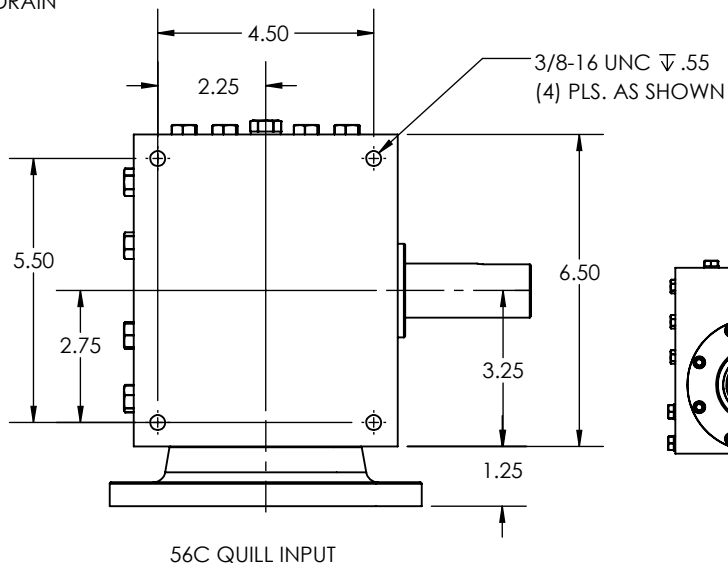
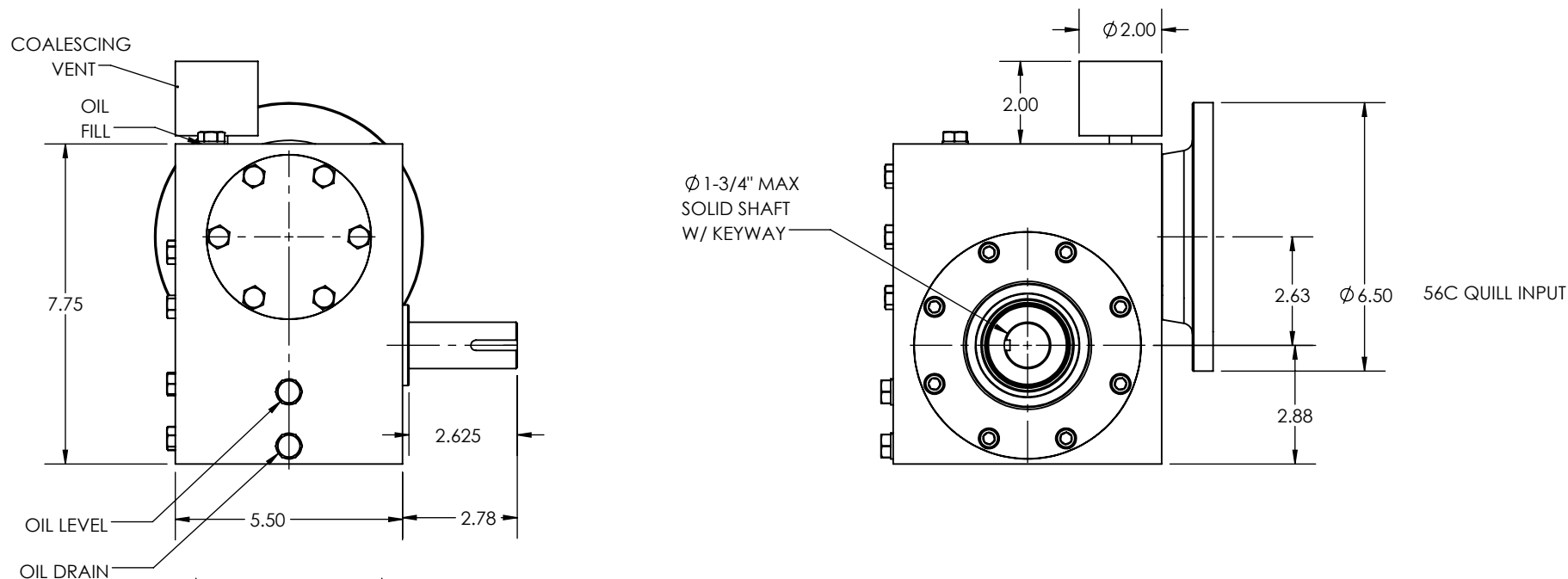
DO NOT SCALE DRAWING	MATERIAL: T304 EXTERIOR 17-4 H1150 SHAFT
UNLESS OTHERWISE SPECIFIED	FINISH: #4 LINE
DIMENSIONS ARE IN INCHES	GENERAL TOLERANCES:
DIMENSIONS AND SURFACE TEXTURE DESIGNATIONS APPLY PRIOR TO FINISH	.X = +/- 0.015
DEBURR AND BREAK ALL SHARP EDGES 0.005 - 0.015	.XX = +/- 0.010
	.XXX = +/- 0.005
	FRACTIONAL = +/- 1/64
	ANGULAR = +/- 1/2°
REFERENCE DRAWING:	
DRAWING NUMBER:	F:\Website\GEARBOXES\RA\RA262HRXXGXXXO1N

STAINLESS MOTORS INC.

DRAWN: RSC
CHECK:
ENG: JO
DATE: 9/19/2017

RA262, HOLLOW BORE SHAFT, 1IN MOUNTING, FLANGED OUTPUT, 56C COUPLED INPUT

REVISIONS			
REV.	DESCRIPTION	BY	DATE



REDUCTION RATIO	L				
	1/2 HP	1 HP	1-1/2 HP	2 HP	3 HP
5	---	---	---	---	17.35
7.5	---	---	---	17.35	17.35
10	---	---	17.35	17.35	---
15	---	---	17.35	---	---
20	---	16.85	17.35	---	---
25	---	16.85	17.35	---	---
30	---	16.85	---	---	---
40	---	16.85	---	---	---
50	14.85	---	---	---	---
60	14.85	---	---	---	---

NOTE: VALUES FOR 56C, 143TC, 145TC; 4 POLE; TEFC MOTORS

1. OTHER SHAFT SIZES AVAILABLE
2. OTHER MOUNTING ORIENTATIONS AVAILABLE

NOTES:

THIS DRAWING CONTAINS INFORMATION WHICH IS PROPRIETARY AND CONFIDENTIAL TO STAINLESS MOTORS, INC., AND IS TRANSMITTED IN CONFIDENCE. THE REPRODUCTION, USE OR DISCLOSURE, IN WHOLE OR IN PART, OF THE DESIGN CONTAINED HEREIN TO OTHERS IS PROHIBITED WITHOUT THE WRITTEN CONSENT OF STAINLESS MOTORS, INC.

© COPYRIGHT STAINLESS MOTORS, INC. ALL RIGHTS RESERVED. YEAR OF COPYRIGHT IS FIRST YEAR INDICATED ON THE DRAWING.

DO NOT SCALE DRAWING

UNLESS OTHERWISE SPECIFIED

DIMENSIONS ARE IN INCHES
DIMENSIONS AND SURFACE
TEXTURE DESIGNATIONS
APPLY PRIOR TO FINISH

DEBURR AND BREAK ALL
SHARP EDGES 0.005 - 0.015

REFERENCE

DRAWING:

NUMBER: F:\Website\GEARBOXES\RA\RA2625RXXCXXX01A

MATERIAL:

T304 EXTERIOR
17-4 H1150 SHAFT

FINISH:
#4 LINE

GENERAL TOLERANCES:

.X = ± 0.015
.XX = ± 0.010
.XXX = ± 0.005

FRACTIONAL = $\pm 1/64$
ANGULAR = $\pm 1/2^\circ$

**STAINLESS
MOTORS INC.**

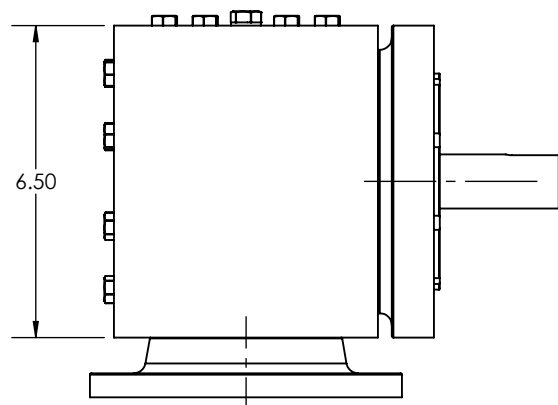
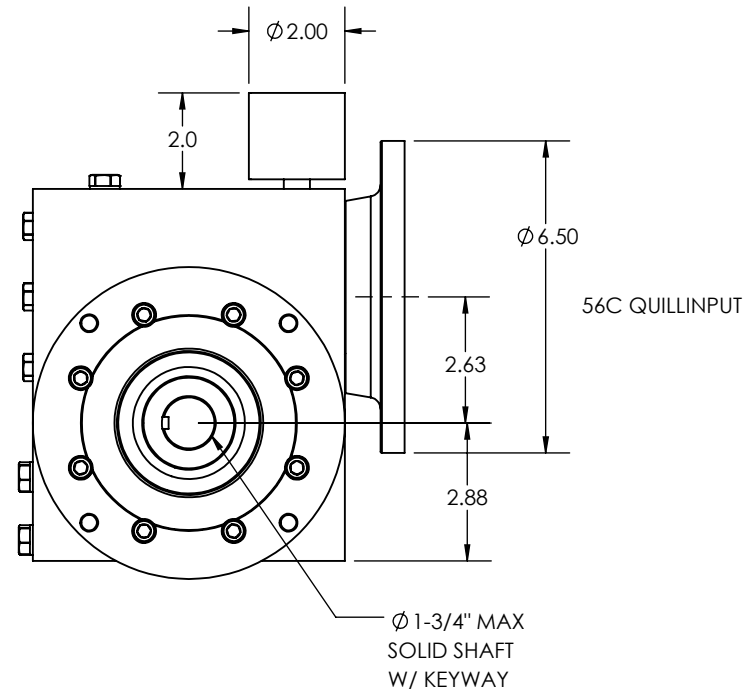
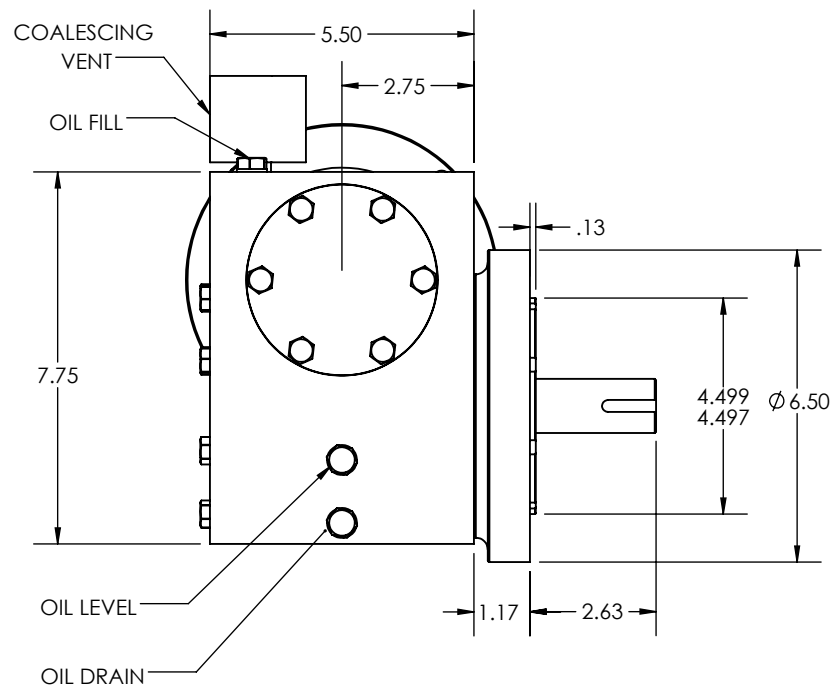
DRAWN: RSC

CHECK:

ENG: JO

DATE: 9/19/2017

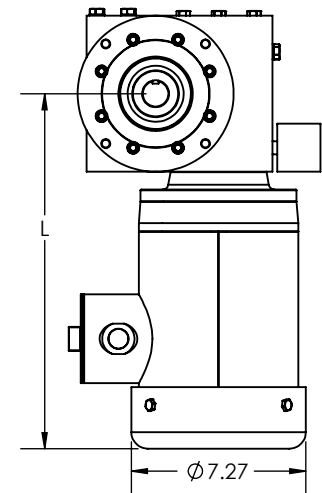
RA262, SOLID SHAFT,
1A MOUNTING,
56C QUILL INPUT



56C QUILLINPUT

REDUCTION RATIO	L				
	1/2 HP	1 HP	1-1/2 HP	2 HP	3 HP
5	---	---	---	---	17.35
7.5	---	---	---	17.35	17.35
10	---	---	17.35	17.35	---
15	---	---	17.35	---	---
20	---	16.85	17.35	---	---
25	---	16.85	17.35	---	---
30	---	16.85	---	---	---
40	---	16.85	---	---	---
50	14.85	---	---	---	---
60	14.85	---	---	---	---

NOTE: VALUES FOR 56C, 143TC, 145TC; 4 POLE; TEFC MOTORS



1. OTHER SHAFT SIZES AVAILABLE
2. OTHER FLANGE SIZES AVAILABLE

NOTES:

THIS DRAWING CONTAINS INFORMATION WHICH IS PROPRIETARY AND CONFIDENTIAL TO STAINLESS MOTORS, INC., AND IS TRANSMITTED IN CONFIDENCE. THE REPRODUCTION, USE OR DISCLOSURE, IN WHOLE OR IN PART, OF THE DESIGN CONTAINED HEREIN TO OTHERS IS PROHIBITED WITHOUT THE WRITTEN CONSENT OF STAINLESS MOTORS, INC.

© COPYRIGHT STAINLESS MOTORS, INC. ALL RIGHTS RESERVED. YEAR OF COPYRIGHT IS FIRST YEAR INDICATED ON THE DRAWING.

DO NOT SCALE DRAWING

UNLESS OTHERWISE SPECIFIED

DIMENSIONS ARE IN INCHES
DIMENSIONS AND SURFACE TEXTURE DESIGNATIONS APPLY PRIOR TO FINISH

DEBURR AND BREAK ALL SHARP EDGES 0.005 - 0.015

REFERENCE

DRAWING: F:\Website\GEARBOXES\RA\RA262SRXXCXXXO1N
NUMBER:

MATERIAL

T304 EXTERIOR
17-4 H1150 SHAFT
#4 LINE

FINISH:

GENERAL TOLERANCES:

.X = +/- 0.015

.XX = +/- 0.010

.XXX = +/- 0.005

FRACTIONAL = +/- 1/64

ANGULAR = +/- 1/2°

**STAINLESS
MOTORS INC.**

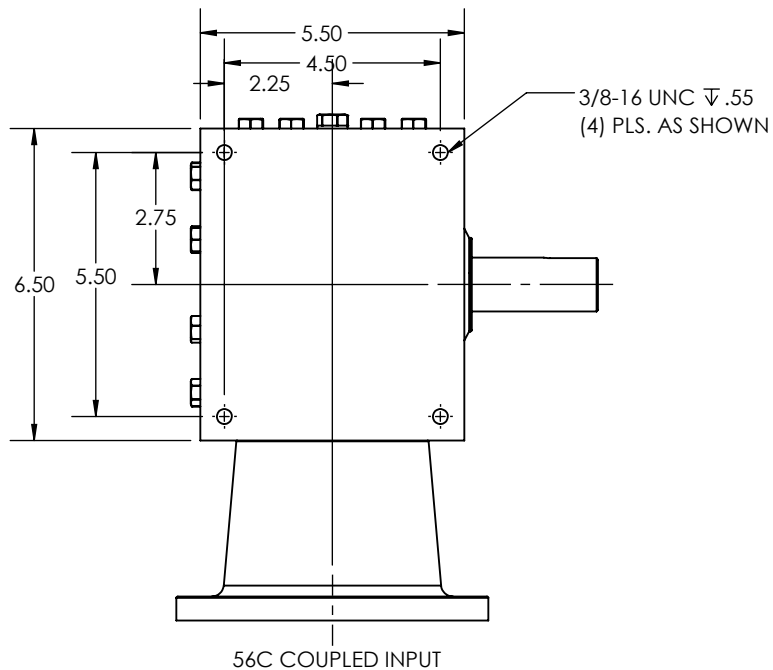
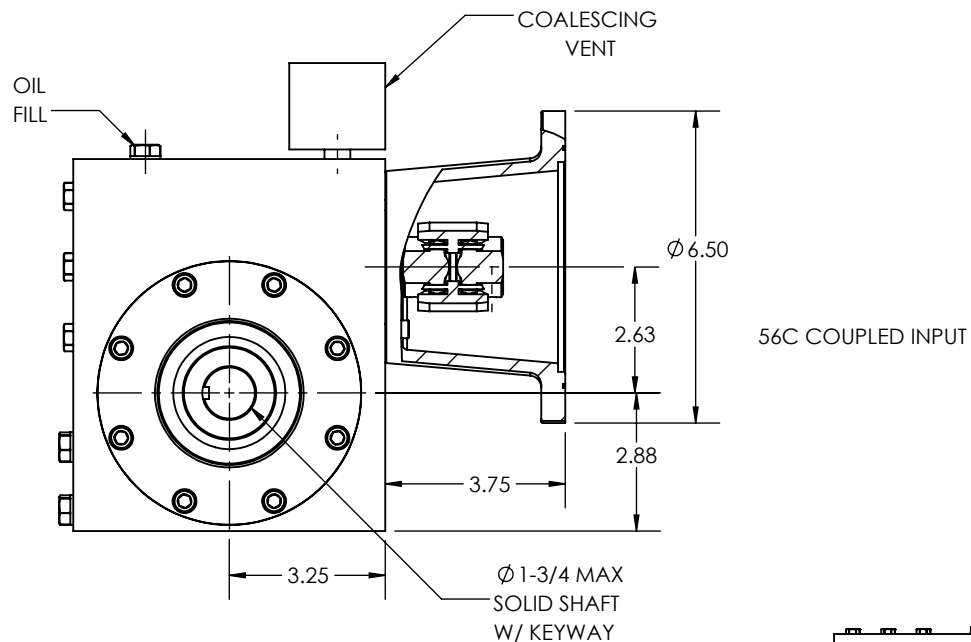
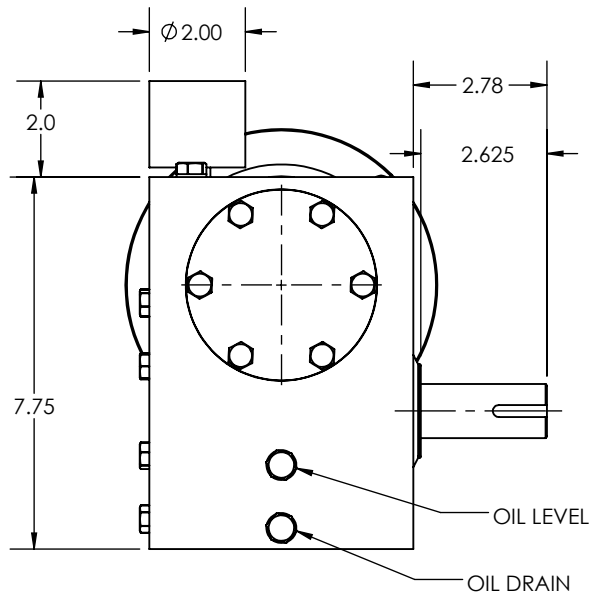
DRAWN: RSC

CHECK:

ENG: JO

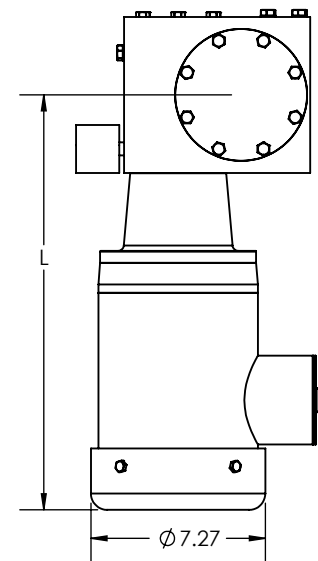
DATE: 9/19/2017

RA262, SOLID SHAFT,
1N MOUNTING,
FLANGED OUTPUT,
56C QUILL INPUT



REDUCTION RATIO	L				
	1/2 HP	1 HP	1-1/2 HP	2 HP	3 HP
5	---	---	---	---	19.85
7.5	---	---	---	19.85	19.85
10	---	---	19.85	19.85	---
15	---	---	19.85	---	---
20	---	19.35	19.85	---	---
25	---	19.35	19.85	---	---
30	---	19.35	---	---	---
40	---	19.35	---	---	---
50	17.35	---	---	---	---
60	17.35	---	---	---	---

NOTE: VALUES FOR 56C, 143TC, 145TC; 4 POLE; TEFC MOTORS



- OTHER SHAFT SIZES AVAILABLE
- OTHER MOUNTING ORIENTATIONS AVAILABLE

NOTES:

THIS DRAWING CONTAINS INFORMATION WHICH IS PROPRIETARY AND CONFIDENTIAL TO STAINLESS MOTORS, INC., AND IS TRANSMITTED IN CONFIDENCE. THE REPRODUCTION, USE OR DISCLOSURE, IN WHOLE OR IN PART, OF THE DESIGN CONTAINED HEREIN TO OTHERS IS PROHIBITED WITHOUT THE WRITTEN CONSENT OF STAINLESS MOTORS, INC.

© COPYRIGHT STAINLESS MOTORS, INC. ALL RIGHTS RESERVED. YEAR OF COPYRIGHT IS FIRST YEAR INDICATED ON THE DRAWING.

DO NOT SCALE DRAWING

UNLESS OTHERWISE SPECIFIED

DIMENSIONS ARE IN INCHES
DIMENSIONS AND SURFACE
TEXTURE DESIGNATIONS
APPLY PRIOR TO FINISH

DEBURR AND BREAK ALL
SHARP EDGES 0.005 - 0.015

REFERENCE

DRAWING:

NUMBER: F:\Website\GEARBOXES\RA\RA2625RXXGXXXO1A

MATERIAL:

T304 EXTERIOR
17-4 H1150 SHAFT
#4 LINE

GENERAL TOLERANCES:

.X = +/-0.015
.XX = +/-0.010
.XXX = +/-0.005

FRACTIONAL = +/- 1/64
ANGULAR = +/- 1/2°

**STAINLESS
MOTORS INC.**

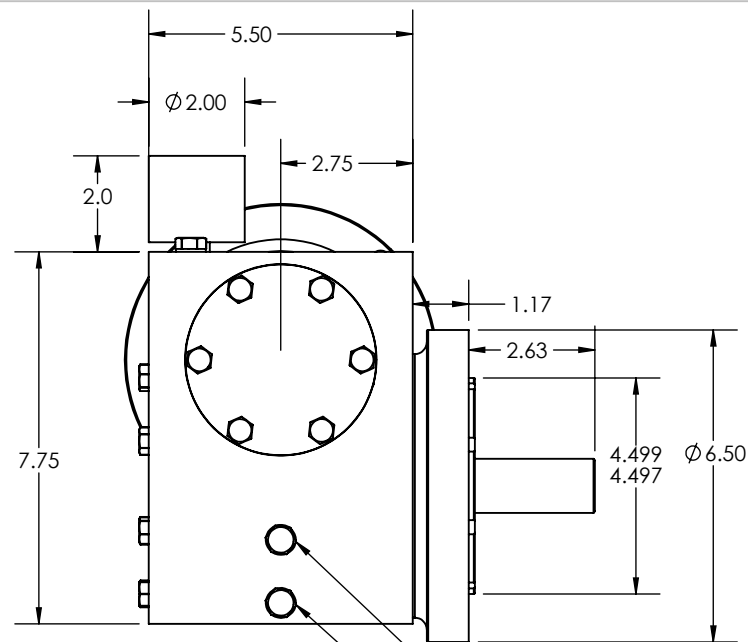
DRAWN: RSC

CHECK:

ENG: JO

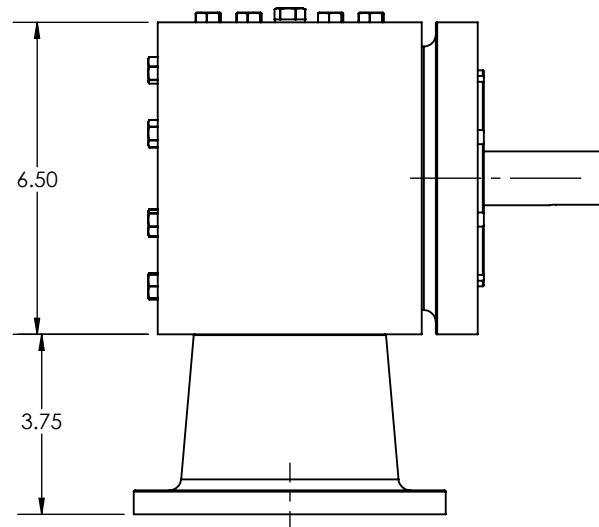
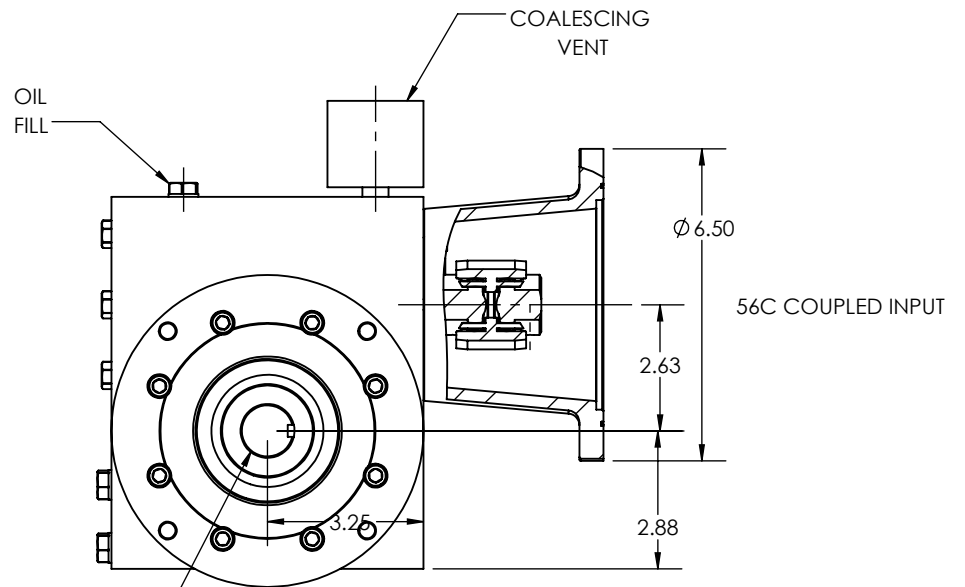
DATE: 9/19/2017

RA262, SOLID SHAFT,
1A MOUNTING, 56C
COUPLED INPUT

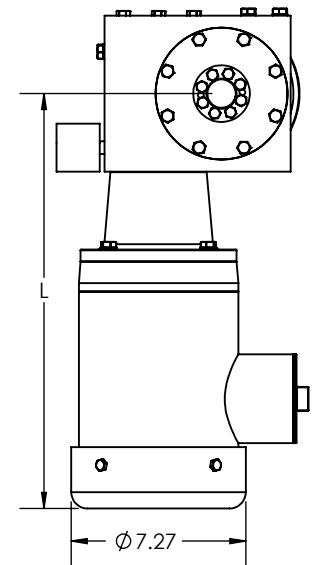


OIL LEVEL
OIL DRAIN

Ø 1-3/4" MAX
SOLID SHAFT
W/ KEYWAY



56C COUPLED INPUT



REDUCTION RATIO	L				
	1/2 HP	1 HP	1-1/2 HP	2 HP	3 HP
5	---	---	---	---	19.85
7.5	---	---	---	19.85	19.85
10	---	---	19.85	19.85	---
15	---	---	19.85	---	---
20	---	19.35	19.85	---	---
25	---	19.35	19.85	---	---
30	---	19.35	---	---	---
40	---	19.35	---	---	---
50	17.35	---	---	---	---
60	17.35	---	---	---	---

NOTE: VALUES FOR 56C, 143TC, 145TC; 4 POLE; TEFC MOTORS

DO NOT SCALE DRAWING

UNLESS OTHERWISE SPECIFIED

DIMENSIONS ARE IN INCHES
DIMENSIONS AND SURFACE
TEXTURE DESIGNATIONS
APPLY PRIOR TO FINISH

DEBURR AND BREAK ALL
SHARP EDGES 0.005 - 0.015

MATERIAL

T304 EXTERIOR
17-4 H1150 SHAFT
#4 LINE

GENERAL TOLERANCES:

.X = +/- 0.015
.XX = +/- 0.010
.XXX = +/- 0.005

FRACTIONAL = +/- 1/64
ANGULAR = +/- 1/2°

**STAINLESS
MOTORS INC.**

DRAWN: RSC

CHECK:

ENG: JO

DATE: 9/19/2017

RA262, SOLID SHAFT,
1N MOUNTING,
FLANGED OUTPUT,
56C COUPLED INPUT

THIS DRAWING CONTAINS INFORMATION WHICH IS
PROPRIETARY AND CONFIDENTIAL TO STAINLESS
MOTORS, INC., AND IS TRANSMITTED IN CONFIDENCE.
THE REPRODUCTION, USE OR DISCLOSURE, IN
WHOLE OR IN PART, OF THE DESIGN CONTAINED
HEREIN TO OTHERS IS PROHIBITED WITHOUT THE
WRITTEN CONSENT OF STAINLESS MOTORS, INC.

© COPYRIGHT STAINLESS MOTORS, INC. ALL RIGHTS
RESERVED. YEAR OF COPYRIGHT IS FIRST YEAR
INDICATED ON THE DRAWING.

REFERENCE

DRAWING:
NUMBER: F:\Website\GEARBOXES\RA\RA262SXXGXXXO1N

1. OTHER SHAFT SIZES AVAILABLE
2. OTHER FLANGE SIZES AVAILABLE

NOTES: