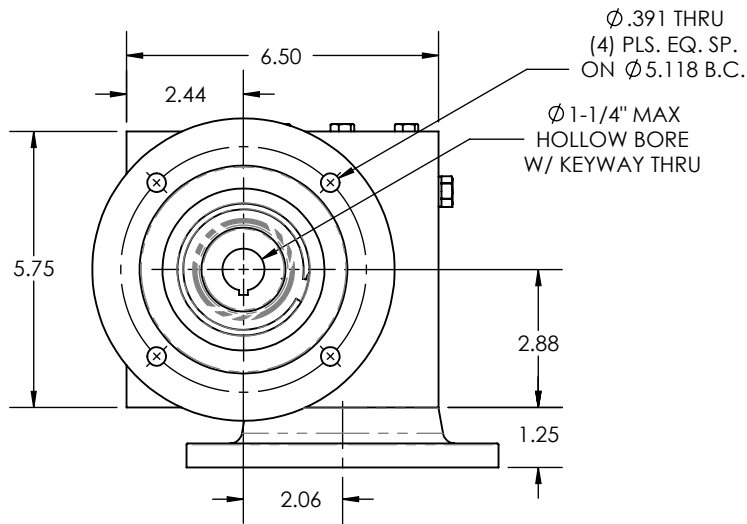
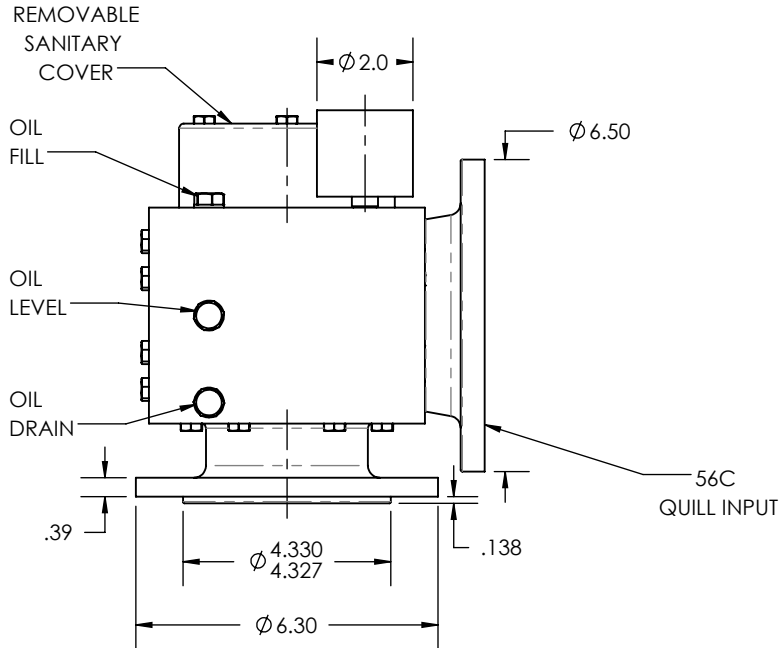
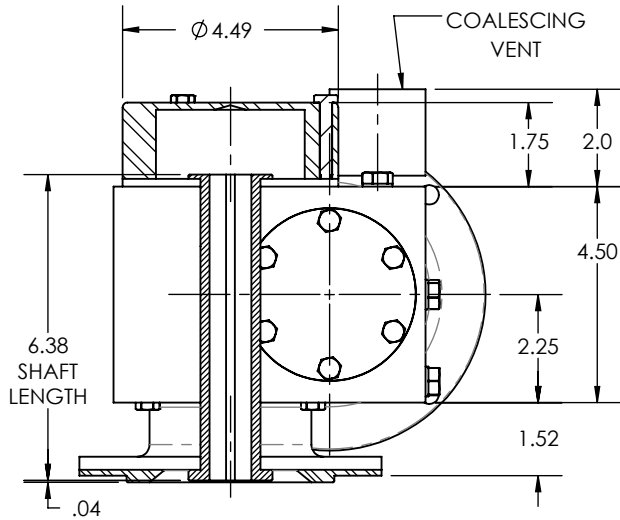
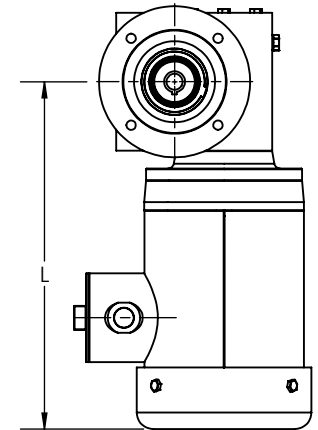


REVISIONS			
REV.	DESCRIPTION	BY	DATE



REDUCTION RATIO	L			
	1/2 HP	1 HP	1-1/2 HP	2 HP
5	---	---	---	16.97
7.5	---	---	16.97	---
10	---	16.47	---	---
15	---	16.47	---	---
20	---	16.47	---	---
25	14.47	---	---	---
30	14.47	---	---	---
40	14.47	---	---	---
50	14.47	---	---	---
60	14.47	---	---	---

NOTE: VALUES FOR 56C, 143TC, 145TC; 4 POLE; TEFC MOTORS



- OTHER SHAFT SIZES AVAILABLE
- OTHER FLANGE SIZES AVAILABLE
- OTHER SHAFT ATTACHMENT OPTIONS AVAILABLE

**NOTES:**

THIS DRAWING CONTAINS INFORMATION WHICH IS PROPRIETARY AND CONFIDENTIAL TO STAINLESS MOTORS, INC., AND IS TRANSMITTED IN CONFIDENCE. THE REPRODUCTION, USE OR DISCLOSURE, IN WHOLE OR IN PART, OF THE DESIGN CONTAINED HEREIN TO OTHERS IS PROHIBITED WITHOUT THE WRITTEN CONSENT OF STAINLESS MOTORS, INC.

© COPYRIGHT STAINLESS MOTORS, INC. ALL RIGHTS RESERVED. YEAR OF COPYRIGHT IS FIRST YEAR INDICATED ON THE DRAWING.

DO NOT SCALE DRAWING  
UNLESS OTHERWISE SPECIFIED

DIMENSIONS ARE IN INCHES  
DIMENSIONS AND SURFACE TEXTURE DESIGNATIONS APPLY PRIOR TO FINISH

DEBURR AND BREAK ALL SHARP EDGES 0.005 - 0.015

REFERENCE

DRAWING NUMBER: F:\Website\GEARBOXES\RA\RA206HRXXCXXXO4N

MATERIAL: T304 EXTERIOR  
17-4 H1150 SHAFT

FINISH:  
#4 LINE

GENERAL TOLERANCES:

.X = +/-0.015  
.XX = +/-0.010  
.XXX = +/-0.005

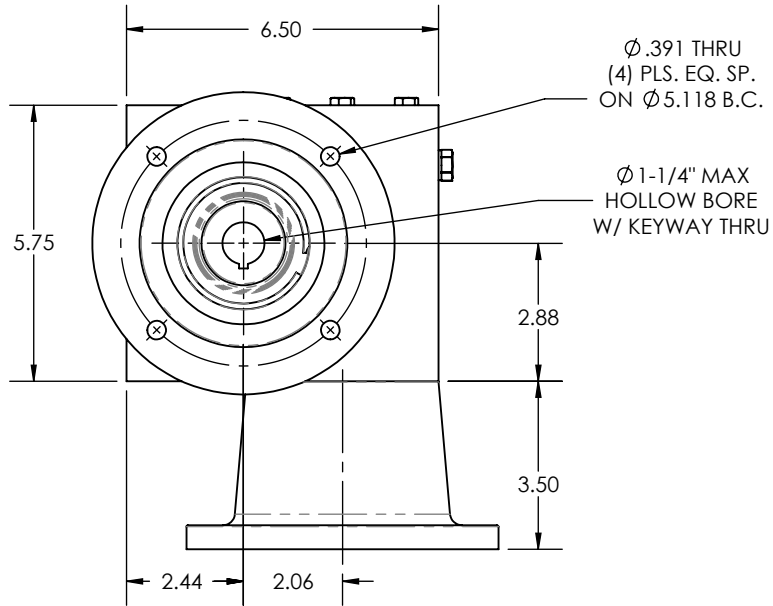
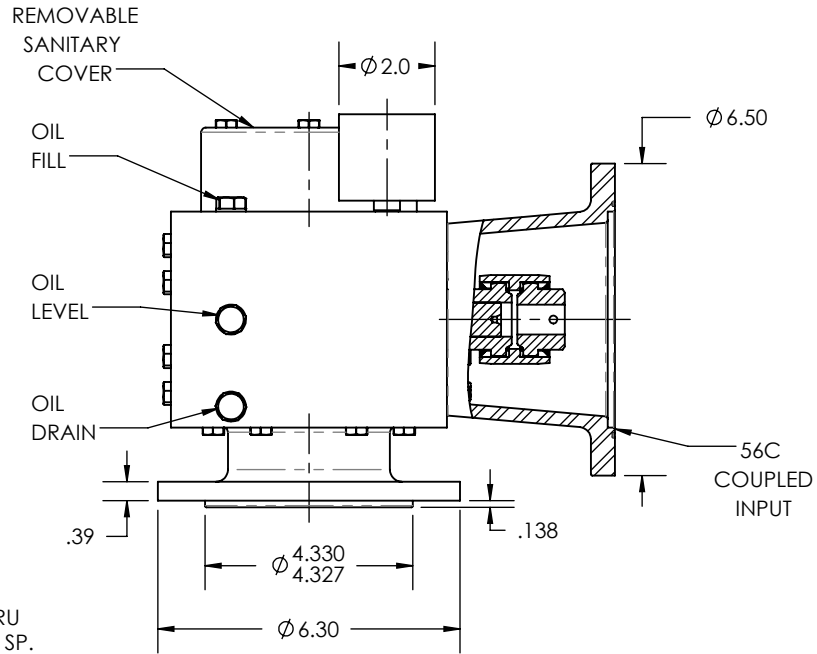
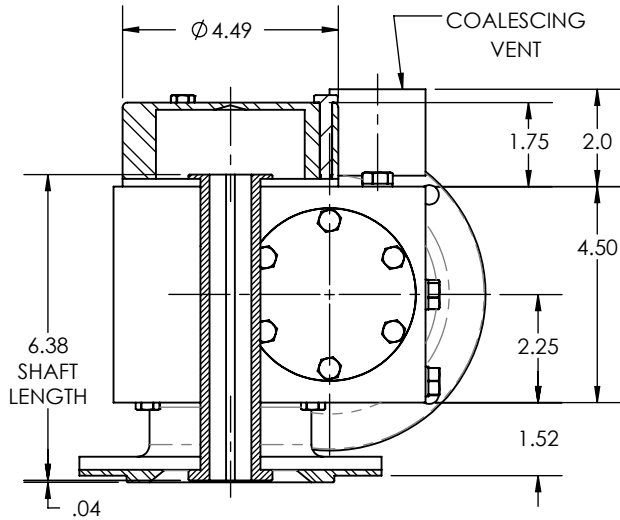
FRACTIONAL = +/- 1/64  
ANGULAR = +/- 1/2°

**STAINLESS MOTORS INC.**

DRAWN: RSC  
CHECK:  
ENG: JO  
DATE: 9/13/2017

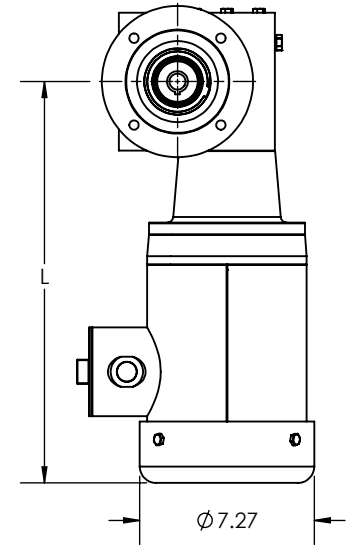
RA206, FLANGE MOUNT,  
HOLLOW BORE SHAFT,  
4N MOUNTING,  
56C QUILL INPUT

REVISIONS			
REV.	DESCRIPTION	BY	DATE



REDUCTION RATIO	L			
	1/2 HP	1 HP	1-1/2 HP	2 HP
5	---	---	---	19.23
7.5	---	---	19.23	---
10	---	18.73	---	---
15	---	18.73	---	---
20	---	18.73	---	---
25	16.73	---	---	---
30	16.73	---	---	---
40	16.73	---	---	---
50	16.73	---	---	---
60	16.73	---	---	---

NOTE: VALUES FOR 56C, 143TC, 145TC; 4 POLE; TEFC MOTORS



- OTHER SHAFT SIZES AVAILABLE
- OTHER FLANGE SIZES AVAILABLE
- OTHER SHAFT ATTACHMENT OPTIONS AVAILABLE

NOTES:

Ø.391 THRU  
(4) PLS. EQ. SP.  
ON Ø.5118 B.C.

Ø 1-1/4" MAX  
HOLLOW BORE  
W/ KEYWAY THRU

THIS DRAWING CONTAINS INFORMATION WHICH IS PROPRIETARY AND CONFIDENTIAL TO STAINLESS MOTORS, INC., AND IS TRANSMITTED IN CONFIDENCE. THE REPRODUCTION, USE OR DISCLOSURE, IN WHOLE OR IN PART, OF THE DESIGN CONTAINED HEREIN TO OTHERS IS PROHIBITED WITHOUT THE WRITTEN CONSENT OF STAINLESS MOTORS, INC.

© COPYRIGHT STAINLESS MOTORS, INC. ALL RIGHTS RESERVED. YEAR OF COPYRIGHT IS FIRST YEAR INDICATED ON THE DRAWING.

DO NOT SCALE DRAWING  
UNLESS OTHERWISE SPECIFIED

MATERIAL: T304 EXTERIOR  
17-4 H1150 SHAFT

DIMENSIONS ARE IN INCHES  
DIMENSIONS AND SURFACE  
TEXTURE DESIGNATIONS  
APPLY PRIOR TO FINISH

FINISH:  
#4 LINE

GENERAL TOLERANCES:  
.X = +/-0.015  
.XX = +/-0.010  
.XXX = +/-0.005

FRACTIONAL = +/- 1/64  
ANGULAR = +/- 1/2°

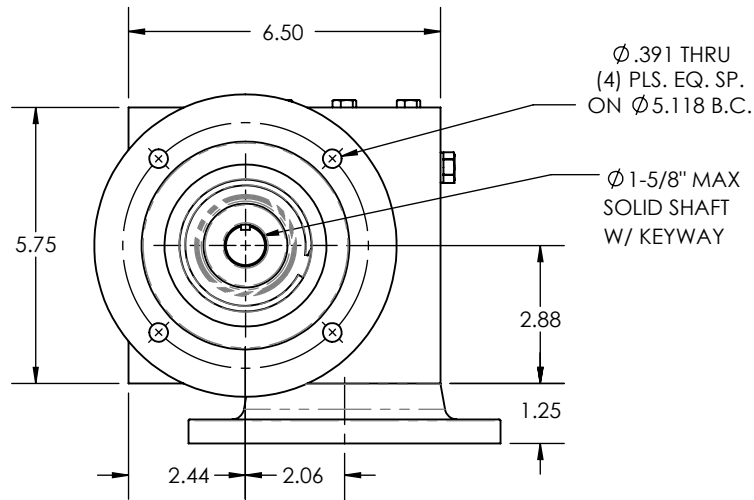
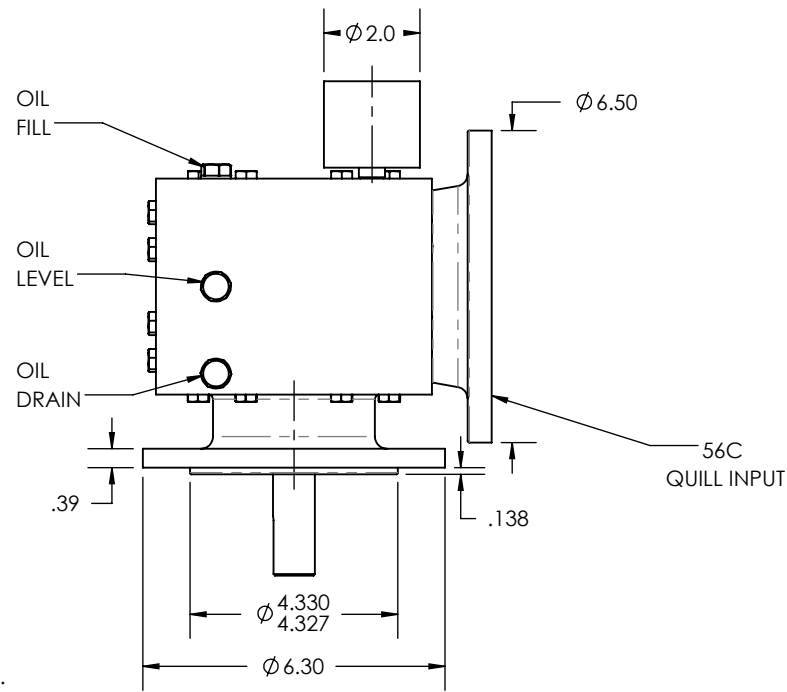
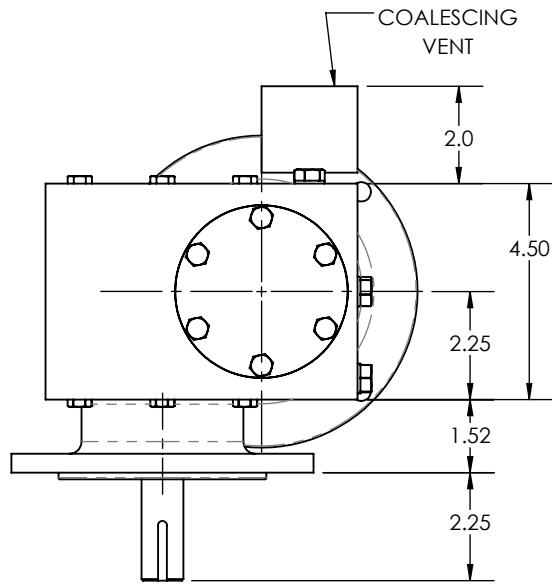
**STAINLESS  
MOTORS INC.**

DRAWN: RSC  
CHECK: JO  
ENG: JO  
DATE: 9/13/2017

RA206, FLANGE MOUNT,  
HOLLOW BORE SHAFT,  
4N MOUNTING, 56C  
COUPLED INPUT

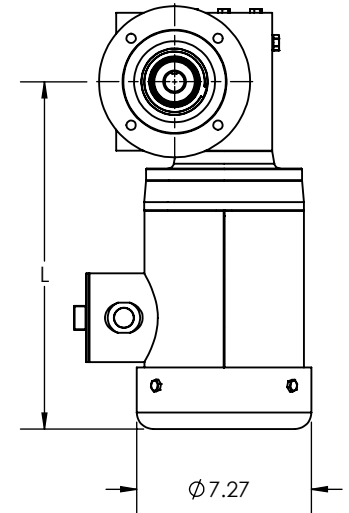
REFERENCE  
DRAWING:  
NUMBER: F:\Website\GEARBOXES\RA\RA206HRXXGXXX04N

REVISIONS			
REV.	DESCRIPTION	BY	DATE



REDUCTION RATIO	L			
	1/2 HP	1 HP	1-1/2 HP	2 HP
5	---	---	---	16.97
7.5	---	---	16.97	---
10	---	16.47	---	---
15	---	16.47	---	---
20	---	16.47	---	---
25	14.47	---	---	---
30	14.47	---	---	---
40	14.47	---	---	---
50	14.47	---	---	---
60	14.47	---	---	---

NOTE: VALUES FOR 56C, 143TC, 145TC; 4 POLE; TEFC MOTORS



- OTHER SHAFT SIZES AVAILABLE
- OTHER FLANGE SIZES AVAILABLE
- OTHER SHAFT ATTACHMENT OPTIONS AVAILABLE

NOTES:

THIS DRAWING CONTAINS INFORMATION WHICH IS PROPRIETARY AND CONFIDENTIAL TO STAINLESS MOTORS, INC., AND IS TRANSMITTED IN CONFIDENCE. THE REPRODUCTION, USE OR DISCLOSURE, IN WHOLE OR IN PART, OF THE DESIGN CONTAINED HEREIN TO OTHERS IS PROHIBITED WITHOUT THE WRITTEN CONSENT OF STAINLESS MOTORS, INC.

© COPYRIGHT STAINLESS MOTORS, INC. ALL RIGHTS RESERVED. YEAR OF COPYRIGHT IS FIRST YEAR INDICATED ON THE DRAWING.

DO NOT SCALE DRAWING

UNLESS OTHERWISE SPECIFIED

DIMENSIONS ARE IN INCHES  
DIMENSIONS AND SURFACE  
TEXTURE DESIGNATIONS  
APPLY PRIOR TO FINISH

DEBURR AND BREAK ALL  
SHARP EDGES 0.005 - 0.015

REFERENCE

DRAWING NUMBER: F:\Website\GEARBOXES\RA\RA206SRXXCXXXO4N

MATERIAL: T304 EXTERIOR  
17-4 H1150 SHAFT

FINISH:  
#4 LINE

GENERAL TOLERANCES:

.X = +/- 0.015  
.XX = +/- 0.010  
.XXX = +/- 0.005

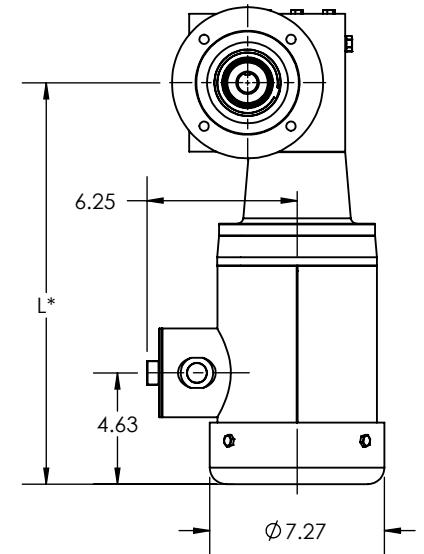
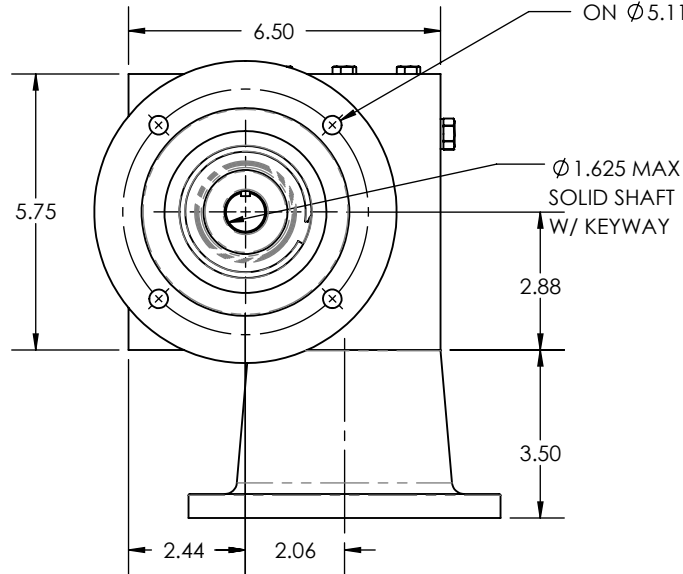
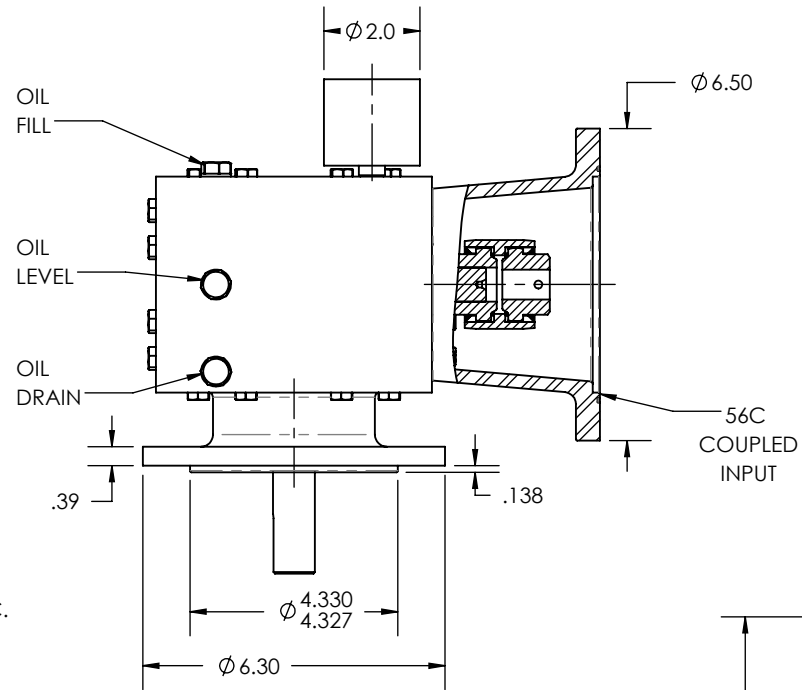
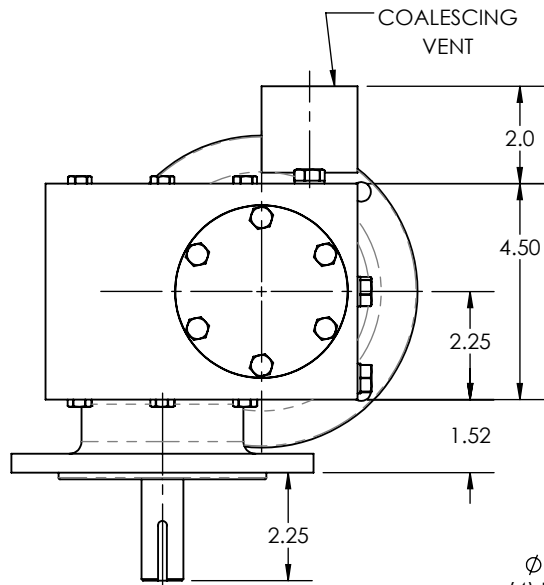
FRACTIONAL = +/- 1/64  
ANGULAR = +/- 1/2°

**STAINLESS  
MOTORS INC.**

DRAWN: RSC  
CHECK:  
ENG: JO  
DATE: 9/13/2017

RA206, FLANGE MOUNT,  
SOLID SHAFT,  
4N MOUNTING,  
56C QUILL INPUT

REVISIONS			
REV.	DESCRIPTION	BY	DATE



REDUCTION RATIO	L*			
	1/2 HP	1 HP	1-1/2 HP	2 HP
5	---	---	---	19.23
7.5	---	---	19.23	---
10	---	18.73	---	---
15	---	18.73	---	---
20	---	18.73	---	---
25	16.73	---	---	---
30	16.73	---	---	---
40	16.73	---	---	---
50	16.73	---	---	---
60	16.73	---	---	---

NOTE: VALUES FOR 56C, 143TC, 145TC; 4 POLE; TEFC MOTORS

- OTHER SHAFT SIZES AVAILABLE
- OTHER FLANGE SIZES AVAILABLE

NOTES:

THIS DRAWING CONTAINS INFORMATION WHICH IS PROPRIETARY AND CONFIDENTIAL TO STAINLESS MOTORS, INC., AND IS TRANSMITTED IN CONFIDENCE. THE REPRODUCTION, USE OR DISCLOSURE, IN WHOLE OR IN PART, OF THE DESIGN CONTAINED HEREIN TO OTHERS IS PROHIBITED WITHOUT THE WRITTEN CONSENT OF STAINLESS MOTORS, INC.

© COPYRIGHT STAINLESS MOTORS, INC. ALL RIGHTS RESERVED. YEAR OF COPYRIGHT IS FIRST YEAR INDICATED ON THE DRAWING.

DO NOT SCALE DRAWING

UNLESS OTHERWISE SPECIFIED

DIMENSIONS ARE IN INCHES  
DIMENSIONS AND SURFACE  
TEXTURE DESIGNATIONS  
APPLY PRIOR TO FINISH

DEBURR AND BREAK ALL  
SHARP EDGES 0.005 - 0.015

REFERENCE

DRAWING: F:\Website\GEARBOXES\RA\RA206SRXXGXXXO4N

MATERIAL: T304 EXTERIOR  
17-4 H1150 SHAFT

FINISH:  
#4 LINE

GENERAL TOLERANCES:

.X = +/-0.015  
.XX = +/-0.010  
.XXX = +/-0.005

FRACTIONAL = +/- 1/64  
ANGULAR = +/- 1/2°

**STAINLESS  
MOTORS INC.**

DRAWN: RSC  
CHECK:  
ENG: JO  
DATE: 9/13/2017

RA206, FLANGE MOUNT,  
SOLID SHAFT,  
4N MOUNTING,  
56C COUPLED INPUT