

	L			
REDUCTION RATIO	1/4 HP	1/2 HP	1 HP	1-1/2 HP
5	---	---	---	16.85
7.5	---	---	16.35	---
10	---	---	16.35	---
15	---	14.35	---	---
20	---	14.35	---	---
25	---	14.35	---	---
30	14.35	---	---	---
40	14.35	---	---	---
50	14.35	---	---	---
60	14.35	---	---	---

NOTE: VALUES FOR 56C, 143TC, 145TC; 4 POLE; TEFC MOTORS

1. OTHER SHAFT SIZES AVAILABLE
2. OTHER MOUNTING ORIENTATIONS AVAILABLE
3. OTHER OUTPUT SHAFT ATTACHMENT OPTIONS AVAILABLE

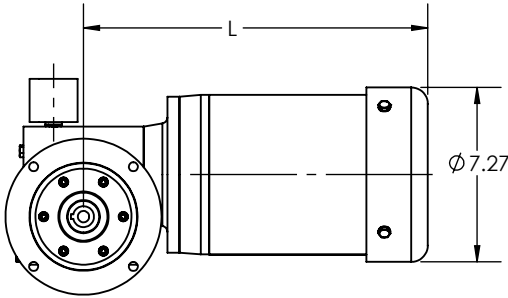
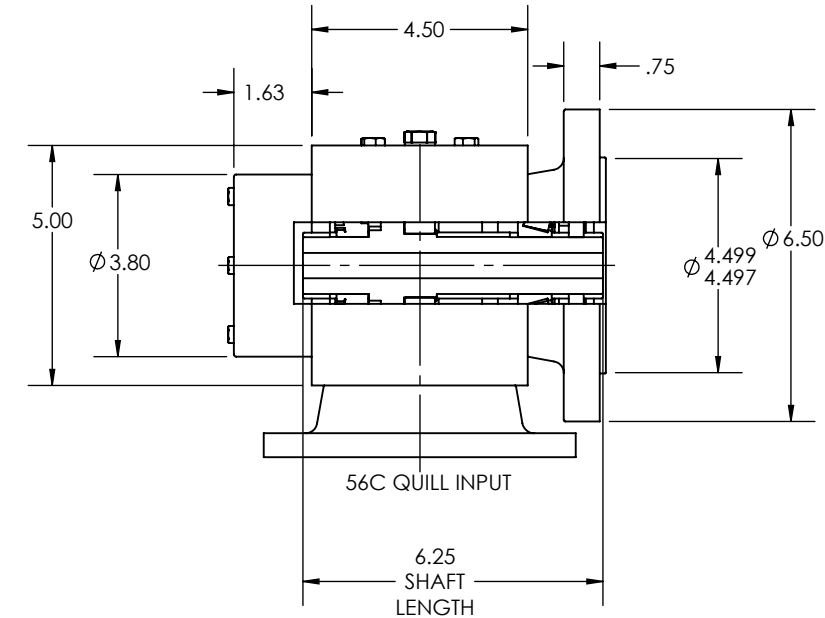
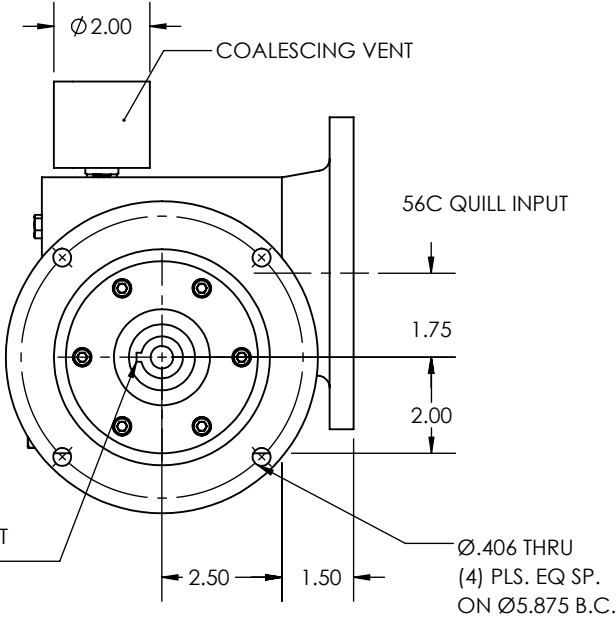
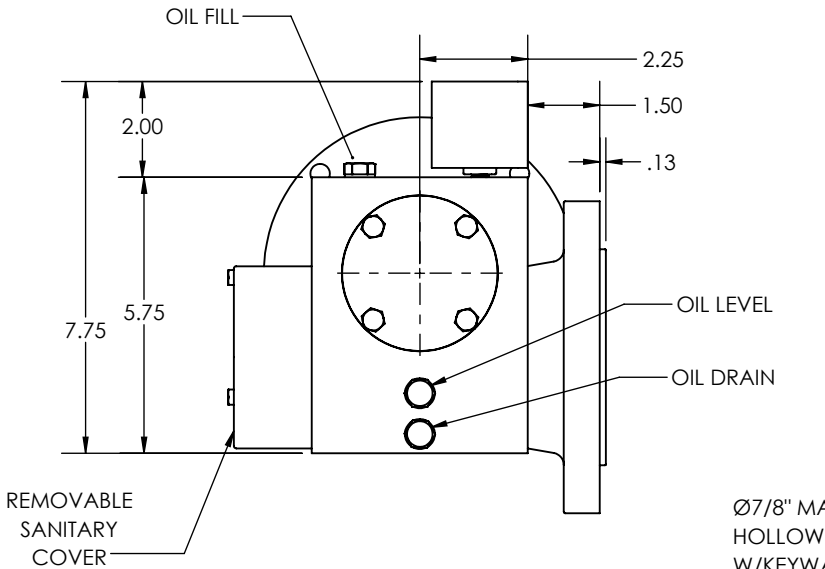
THIS DRAWING CONTAINS INFORMATION WHICH IS PROPRIETARY AND CONFIDENTIAL TO STAINLESS MOTORS, INC., AND IS TRANSMITTED IN CONFIDENCE. THE REPRODUCTION, USE OR DISCLOSURE, IN WHOLE OR IN PART, OF THE DESIGN CONTAINED HEREIN TO OTHERS IS PROHIBITED WITHOUT THE WRITTEN CONSENT OF STAINLESS MOTORS, INC.

© COPYRIGHT STAINLESS MOTORS, INC. ALL RIGHTS RESERVED. YEAR OF COPYRIGHT IS FIRST YEAR INDICATED ON THE DRAWING.

DO NOT SCALE DRAWING	MATERIAL: T304 EXTERIOR, 17-4 H1150 SHAFT	<b>STAINLESS MOTORS INC.</b>	
UNLESS OTHERWISE SPECIFIED	FINISH: #4 LINE		
DIMENSIONS ARE IN INCHES	GENERAL TOLERANCES:	DRAWN: RSC	RA175, 1A MOUNTING, HOLLOW BORE SHAFT, 56C QUILL INPUT
DIMENSIONS AND SURFACE TEXTURE DESIGNATIONS APPLY PRIOR TO FINISH	.X = +/-0.015 .XX = +/-0.010 .XXX = +/-0.005	CHECK:	
DEBURR AND BREAK ALL SHARP EDGES 0.005 - 0.015	FRACTIONAL = +/- 1/64 ANGULAR = +/- 1/2°	ENG: JO	
REFERENCE DRAWING: F:\Website\GEARBOXES\RA\RA175HRXXCXXX01A		DATE: 9/29/2017	

NOTES:

REVISIONS			
REV.	DESCRIPTION	BY	DATE



REDUCTION RATIO	L			
	1/4 HP	1/2 HP	1 HP	1-1/2 HP
5	---	---	---	16.85
7.5	---	---	16.35	---
10	---	---	16.35	---
15	---	14.35	---	---
20	---	14.35	---	---
25	---	14.35	---	---
30	14.35	---	---	---
40	14.35	---	---	---
50	14.35	---	---	---
60	14.35	---	---	---

NOTE: VALUES FOR 56C, 143TC, 145TC; 4 POLE; TEFC MOTORS

- OTHER SHAFT SIZES AVAILABLE
- OTHER FLANGE SIZES AVAILABLE
- OTHER OUPUT SHAFT ATTACHMENT OPTIONS AVAILABLE

# NOTES:

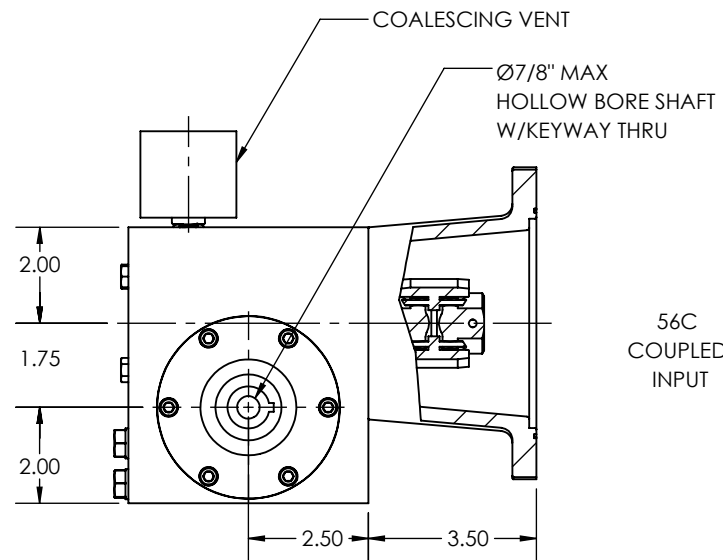
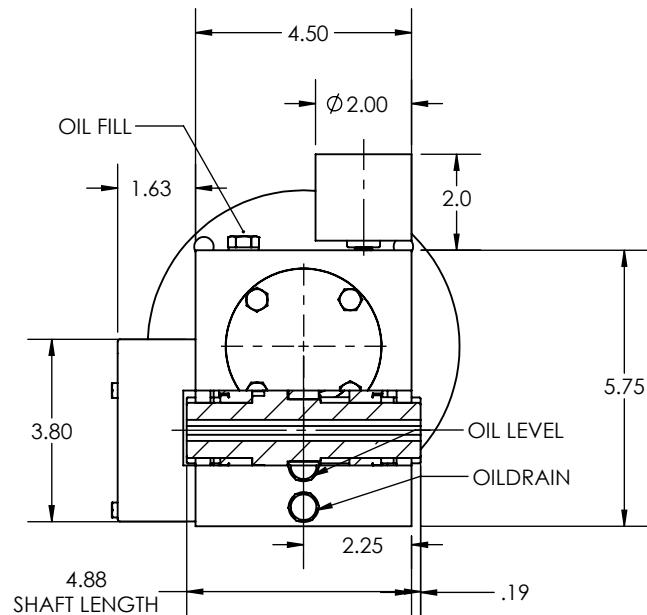
THIS DRAWING CONTAINS INFORMATION WHICH IS PROPRIETARY AND CONFIDENTIAL TO STAINLESS MOTORS, INC., AND IS TRANSMITTED IN CONFIDENCE. THE REPRODUCTION, USE OR DISCLOSURE, IN WHOLE OR IN PART, OF THE DESIGN CONTAINED HEREIN TO OTHERS IS PROHIBITED WITHOUT THE WRITTEN CONSENT OF STAINLESS MOTORS, INC.

© COPYRIGHT STAINLESS MOTORS, INC. ALL RIGHTS RESERVED. YEAR OF COPYRIGHT IS FIRST YEAR INDICATED ON THE DRAWING.

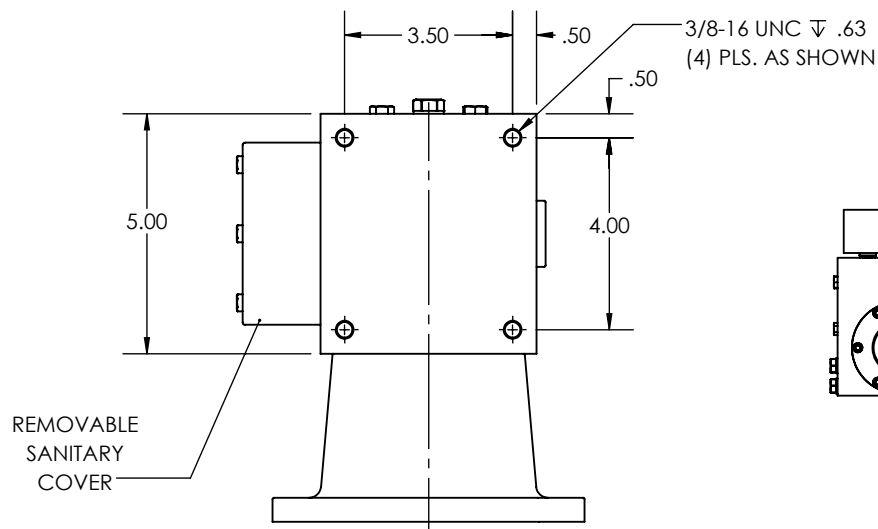
DO NOT SCALE DRAWING	MATERIAL: T304 EXTERIOR, 17-4 H1150 SHAFT
UNLESS OTHERWISE SPECIFIED	FINISH: #4 LINE
DIMENSIONS ARE IN INCHES	GENERAL TOLERANCES:
DIMENSIONS AND SURFACE TEXTURE DESIGNATIONS APPLY PRIOR TO FINISH	.X = $\pm 0.015$
DEBURR AND BREAK ALL SHARP EDGES 0.005 - 0.015	.XX = $\pm 0.010$
	.XXX = $\pm 0.005$
	FRACTIONAL = $\pm 1/64$
	ANGULAR = $\pm 1/2^\circ$
REFERENCE DRAWING:	
DRAWING NUMBER:	F:\Website\GEARBOXES\RA\RA175HRXXCXXX01N

# STAINLESS MOTORS INC.

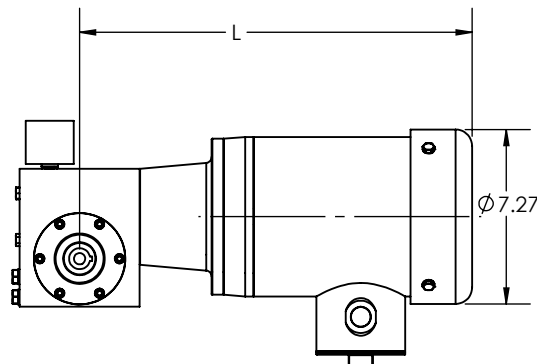
DRAWN: RSC	RA175, 1N MOUNTING, FLANGED OUTPUT, HOLLOW BORE SHAFT, 56C QUILL INPUT
CHECK:	
ENG: JO	
DATE: 9/29/2017	



56C  
COUPLED  
INPUT



56C  
COUPLED  
INPUT



REDUCTION RATIO	L			
	1/4 HP	1/2 HP	1 HP	1-1/2 HP
5	---	---	---	18.85
7.5	---	---	18.35	---
10	---	---	18.35	---
15	---	16.35	---	---
20	---	16.35	---	---
25	---	16.35	---	---
30	16.35	---	---	---
40	16.35	---	---	---
50	16.35	---	---	---
60	16.35	---	---	---

NOTE: VALUES FOR 56C, 143TC, 145TC; 4 POLE;  
TEFC MOTORS

1. OTHER SHAFT SIZES AVAILABLE
2. OTHER MOUNTING ORIENTATIONS AVAILABLE
3. OTHER OUPUT SHAFT ATTACHMENT OPTIONS AVAILABLE

NOTES:

THIS DRAWING CONTAINS INFORMATION WHICH IS PROPRIETARY AND CONFIDENTIAL TO STAINLESS MOTORS, INC., AND IS TRANSMITTED IN CONFIDENCE. THE REPRODUCTION, USE OR DISCLOSURE, IN WHOLE OR IN PART, OF THE DESIGN CONTAINED HEREIN TO OTHERS IS PROHIBITED WITHOUT THE WRITTEN CONSENT OF STAINLESS MOTORS, INC.

© COPYRIGHT STAINLESS MOTORS, INC. ALL RIGHTS RESERVED. YEAR OF COPYRIGHT IS FIRST YEAR INDICATED ON THE DRAWING.

DO NOT SCALE DRAWING

UNLESS OTHERWISE SPECIFIED

DIMENSIONS ARE IN INCHES  
DIMENSIONS AND SURFACE  
TEXTURE DESIGNATIONS  
APPLY PRIOR TO FINISH

DEBURR AND BREAK ALL  
SHARP EDGES 0.005 - 0.015

REFERENCE  
DRAWING:

NUMBER: F:\Website\GEARBOXES\RA\RA175HRXXGXXX01A

MATERIAL: T304 EXTERIOR,  
17-4 H1150 SHAFT

FINISH:  
#4 LINE

GENERAL TOLERANCES:

.X =  $\pm 0.015$   
.XX =  $\pm 0.010$   
.XXX =  $\pm 0.005$

FRACTIONAL =  $\pm 1/64$   
ANGULAR =  $\pm 1/2^\circ$

**STAINLESS  
MOTORS INC.**

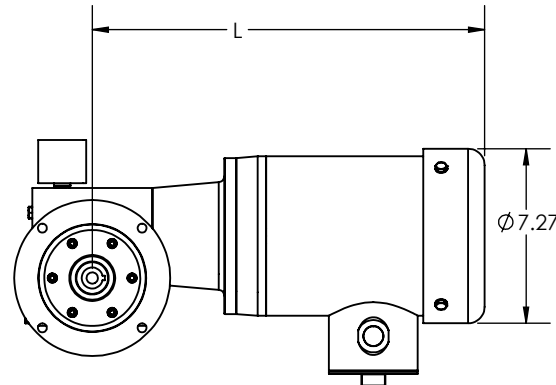
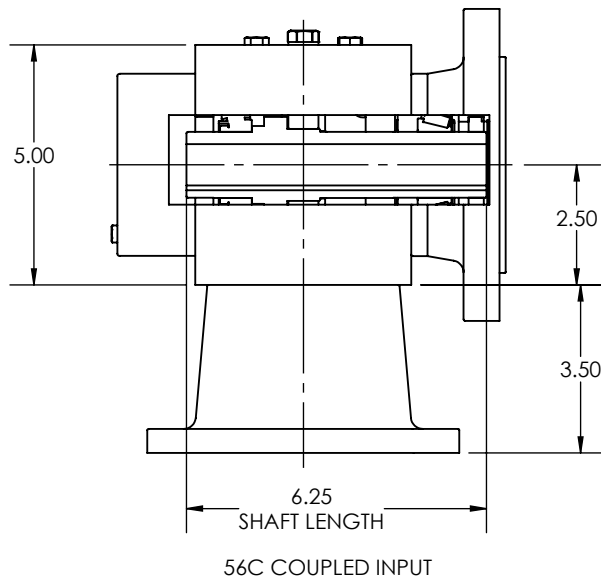
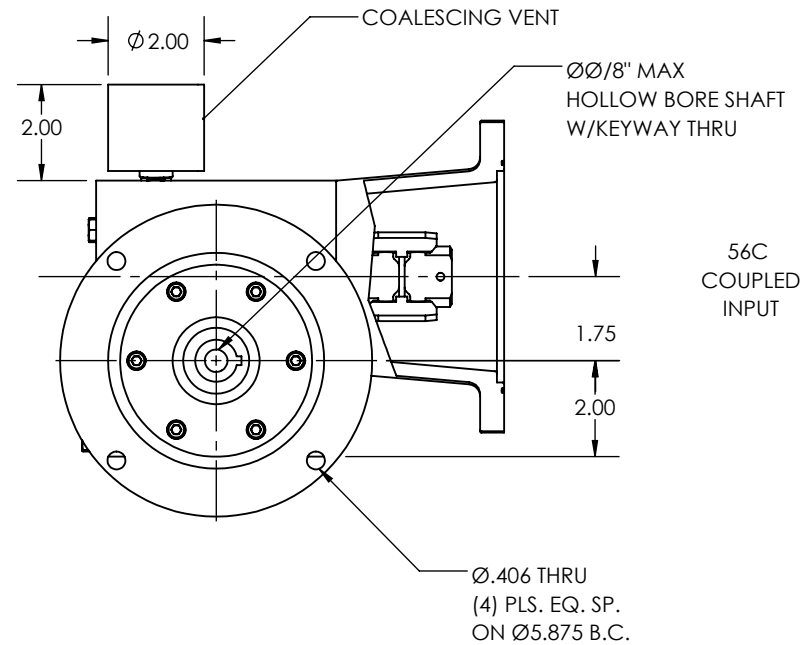
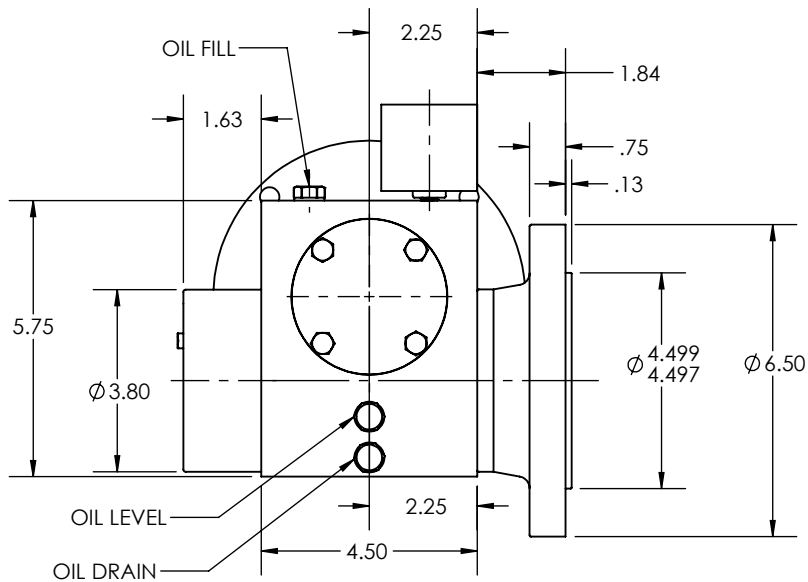
DRAWN: RSC

CHECK:

ENG: JO

DATE: 9/29/2017

RA175, 1A MOUNTING,  
HOLLOW BORE SHAFT,  
56C COUPLED INPUT



REDUCTION RATIO	L			
	1/4 HP	1/2 HP	1 HP	1-1/2 HP
5	---	---	---	18.85
7.5	---	---	18.35	---
10	---	---	18.35	---
15	---	16.35	---	---
20	---	16.35	---	---
25	---	16.35	---	---
30	16.35	---	---	---
40	16.35	---	---	---
50	16.35	---	---	---
60	16.35	---	---	---

NOTE: VALUES FOR 56C, 143TC, 145TC; 4 POLE; TEFC MOTORS

- OTHER SHAFT SIZES AVAILABLE
- OTHER FLANGE SIZES AVAILABLE
- OTHER OUPUT SHAFT ATTACHMENT OPTIONS AVAILABLE

## NOTES:

THIS DRAWING CONTAINS INFORMATION WHICH IS PROPRIETARY AND CONFIDENTIAL TO STAINLESS MOTORS, INC., AND IS TRANSMITTED IN CONFIDENCE. THE REPRODUCTION, USE OR DISCLOSURE, IN WHOLE OR IN PART, OF THE DESIGN CONTAINED HEREIN TO OTHERS IS PROHIBITED WITHOUT THE WRITTEN CONSENT OF STAINLESS MOTORS, INC.

© COPYRIGHT STAINLESS MOTORS, INC. ALL RIGHTS RESERVED. YEAR OF COPYRIGHT IS FIRST YEAR INDICATED ON THE DRAWING.

DO NOT SCALE DRAWING

UNLESS OTHERWISE SPECIFIED

DIMENSIONS ARE IN INCHES

DIMENSIONS AND SURFACE TEXTURE DESIGNATIONS APPLY PRIOR TO FINISH

DEBURR AND BREAK ALL SHARP EDGES 0.005 - 0.015

MATERIAL: T304 EXTERIOR, 17-4 H1150 SHAFT #4 LINE

FINISH:

GENERAL TOLERANCES:  
.X = +/- 0.015  
.XX = +/- 0.010  
.XXX = +/- 0.005

FRACTIONAL = +/- 1/64  
ANGULAR = +/- 1/2°

**STAINLESS  
MOTORS INC.**

DRAWN: RSC

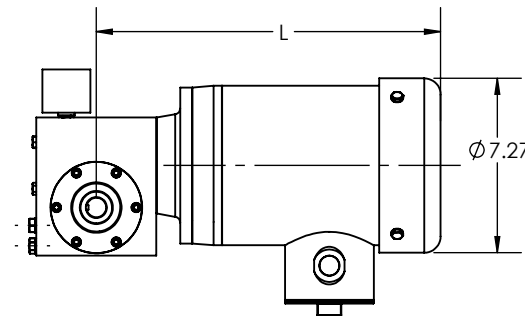
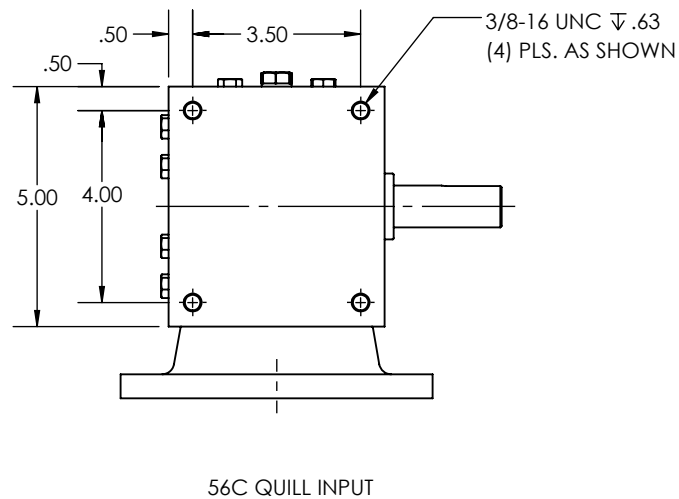
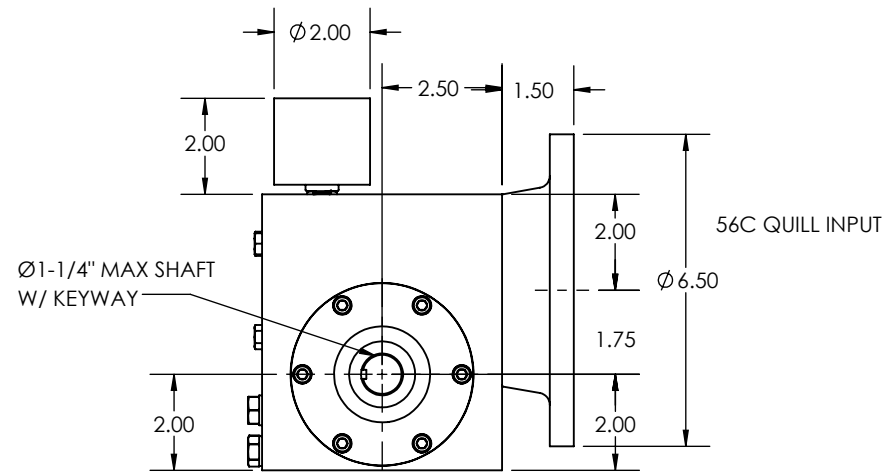
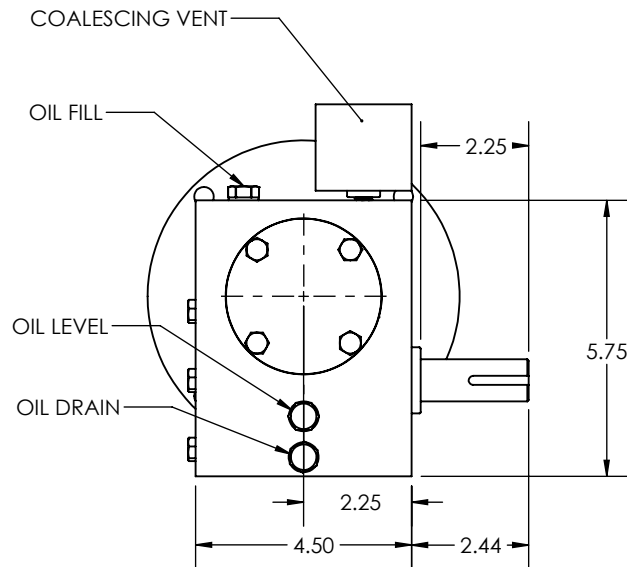
CHECK:

ENG: JO

DATE: 9/29/2017

RA175, 1IN MOUNTING, FLANGED OUTPUT, HOLLOW BORE SHAFT, 56C COUPLED INPUT

REFERENCE DRAWING:  
DRAWING NUMBER: F:\Website\GEARBOXES\RA\RA175HRXXGXXX01N



REDUCTION RATIO	L			
	1/4 HP	1/2 HP	1 HP	1-1/2 HP
5	---	---	---	16.85
7.5	---	---	16.35	---
10	---	---	16.35	---
15	---	14.35	---	---
20	---	14.35	---	---
25	---	14.35	---	---
30	14.35	---	---	---
40	14.35	---	---	---
50	14.35	---	---	---
60	14.35	---	---	---

NOTE: VALUES FOR 56C, 143TC, 145TC; 4 POLE;  
TEFC MOTORS

1. OTHER SHAFT SIZES AVAILABLE
2. OTHER MOUNTING ORIENTATIONS AVAILABLE

NOTES:

THIS DRAWING CONTAINS INFORMATION WHICH IS PROPRIETARY AND CONFIDENTIAL TO STAINLESS MOTORS, INC., AND IS TRANSMITTED IN CONFIDENCE. THE REPRODUCTION, USE OR DISCLOSURE, IN WHOLE OR IN PART, OF THE DESIGN CONTAINED HEREIN TO OTHERS IS PROHIBITED WITHOUT THE WRITTEN CONSENT OF STAINLESS MOTORS, INC.

© COPYRIGHT STAINLESS MOTORS, INC. ALL RIGHTS RESERVED. YEAR OF COPYRIGHT IS FIRST YEAR INDICATED ON THE DRAWING.

DO NOT SCALE DRAWING

UNLESS OTHERWISE SPECIFIED

DIMENSIONS ARE IN INCHES  
DIMENSIONS AND SURFACE  
TEXTURE DESIGNATIONS  
APPLY PRIOR TO FINISH

DEBURR AND BREAK ALL  
SHARP EDGES 0.005 - 0.015

REFERENCE

DRAWING:

NUMBER: F:\Website\GEARBOXES\RA\RA175SRXXCXXX01A

MATERIAL: T304 EXTERIOR,  
17-4 H1150 SHAFT

FINISH:  
#4 LINE

GENERAL TOLERANCES:

.X =  $\pm 0.015$   
.XX =  $\pm 0.010$   
.XXX =  $\pm 0.005$

FRACTIONAL =  $\pm 1/64$   
ANGULAR =  $\pm 1/2^\circ$

**STAINLESS  
MOTORS INC.**

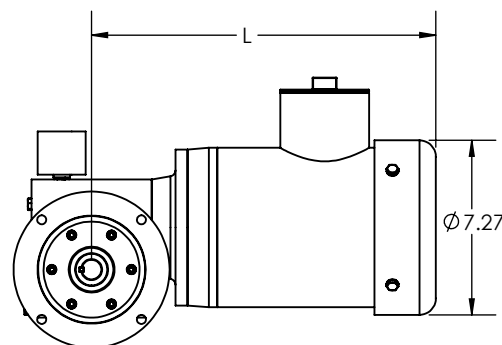
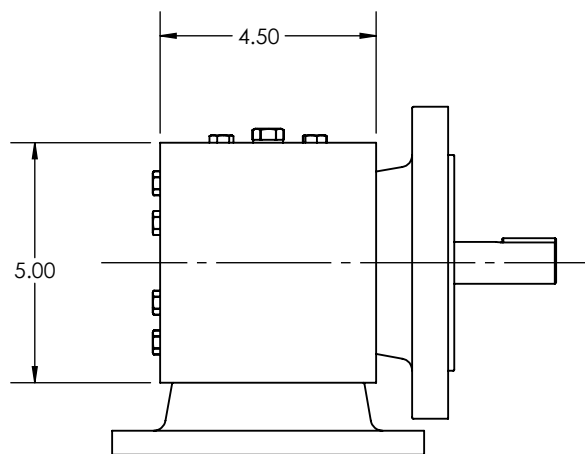
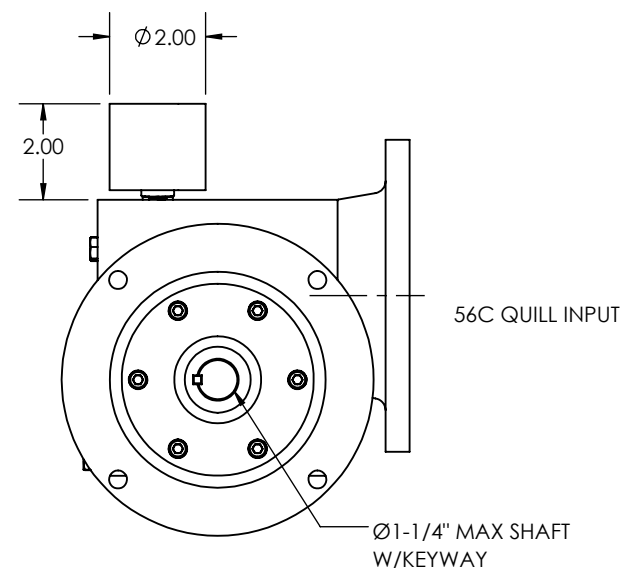
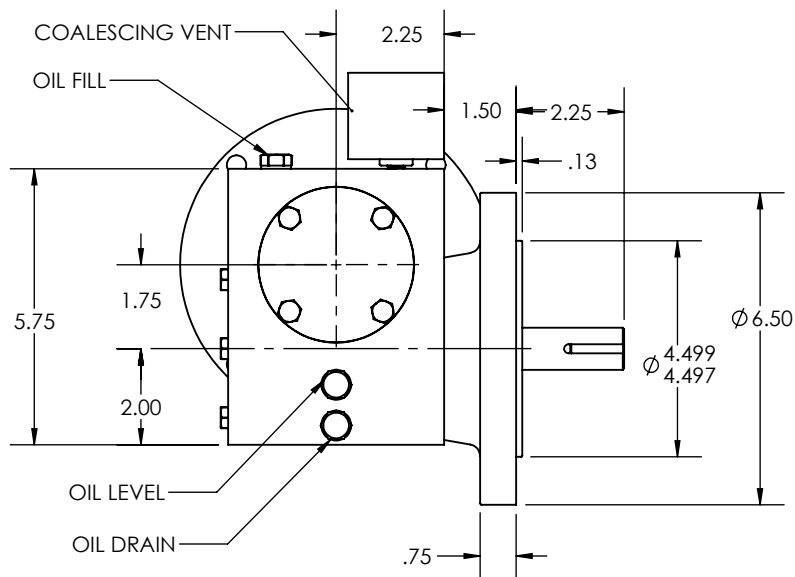
DRAWN: RSC

CHECK:

ENG: JO

DATE: 9/29/2017

RA175, 1A MOUNTING,  
SOLID SHAFT,  
56C QUILL INPUT



REDUCTION RATIO	L			
	1/4 HP	1/2 HP	1 HP	1-1/2 HP
5	---	---	---	16.85
7.5	---	---	16.35	---
10	---	---	16.35	---
15	---	14.35	---	---
20	---	14.35	---	---
25	---	14.35	---	---
30	14.35	---	---	---
40	14.35	---	---	---
50	14.35	---	---	---
60	14.35	---	---	---

NOTE: VALUES FOR 56C, 143TC, 145TC; 4 POLE; TEFC MOTORS

56C QUILL INPUT

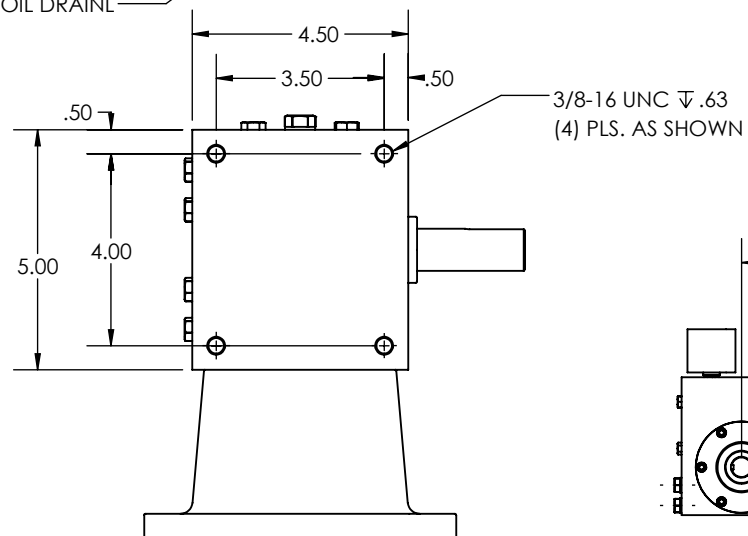
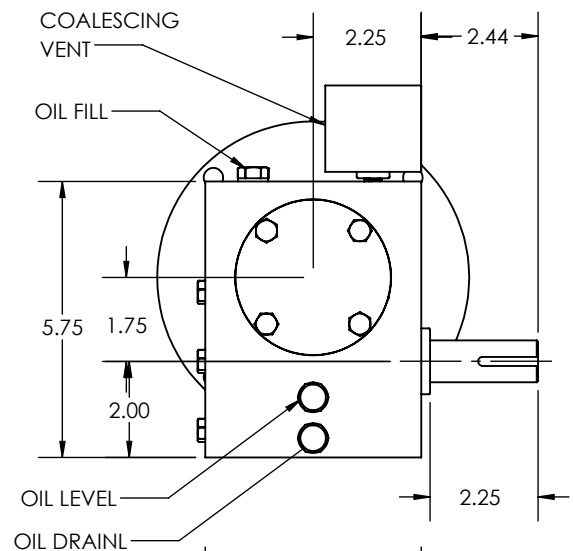
1. OTHER SHAFT SIZES AVAILABLE
2. OTHER FLANGE SIZES AVAILABLE

THIS DRAWING CONTAINS INFORMATION WHICH IS PROPRIETARY AND CONFIDENTIAL TO STAINLESS MOTORS, INC., AND IS TRANSMITTED IN CONFIDENCE. THE REPRODUCTION, USE OR DISCLOSURE, IN WHOLE OR IN PART, OF THE DESIGN CONTAINED HEREIN TO OTHERS IS PROHIBITED WITHOUT THE WRITTEN CONSENT OF STAINLESS MOTORS, INC.

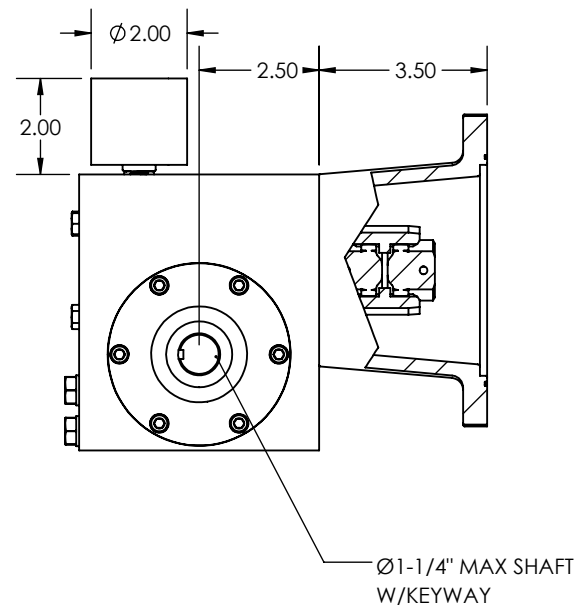
© COPYRIGHT STAINLESS MOTORS, INC. ALL RIGHTS RESERVED. YEAR OF COPYRIGHT IS FIRST YEAR INDICATED ON THE DRAWING.

DO NOT SCALE DRAWING	MATERIAL: T304 EXTERIOR, 17-4 H1150 SHAFT	<b>STAINLESS MOTORS INC.</b>	
UNLESS OTHERWISE SPECIFIED	FINISH: #4 LINE		
DIMENSIONS ARE IN INCHES	GENERAL TOLERANCES:	DRAWN: RSC	RA175, 1N MOUNTING, FLANGED OUTPUT, SOLID SHAFT, 56C QUILL INPUT
DIMENSIONS AND SURFACE TEXTURE DESIGNATIONS APPLY PRIOR TO FINISH	.X = +/-0.015 .XX = +/-0.010 .XXX = +/-0.005	CHECK:	
DEBURR AND BREAK ALL SHARP EDGES 0.005 - 0.015	FRACTIONAL = +/- 1/64 ANGULAR = +/- 1/2°	ENG: JO	
REFERENCE DRAWING: F:\Website\GEARBOXES\RA\RA175SRXXCXXX01N		DATE: 9/29/2017	

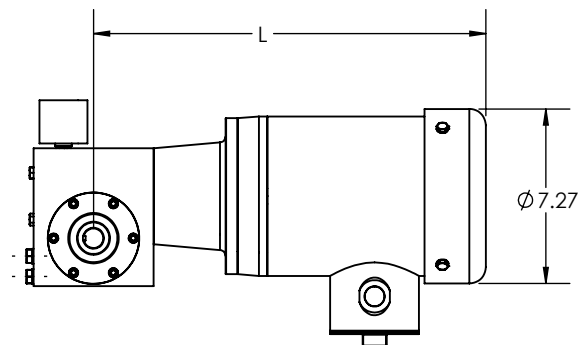
NOTES:



56C COUPLED INPUT



56C COUPLED INPUT



REDUCTION RATIO	L			
	1/4 HP	1/2 HP	1 HP	1-1/2 HP
5	---	---	---	18.85
7.5	---	---	18.35	---
10	---	---	18.35	---
15	---	16.35	---	---
20	---	16.35	---	---
25	---	16.35	---	---
30	16.35	---	---	---
40	16.35	---	---	---
50	16.35	---	---	---
60	16.35	---	---	---

NOTE: VALUES FOR 56C, 143TC, 145TC; 4 POLE;  
TEFC MOTORS

1. OTHER SHAFT SIZES AVAILABLE
2. OTHER MOUNTING ORIENTATIONS AVAILABLE

## NOTES:

THIS DRAWING CONTAINS INFORMATION WHICH IS PROPRIETARY AND CONFIDENTIAL TO STAINLESS MOTORS, INC., AND IS TRANSMITTED IN CONFIDENCE. THE REPRODUCTION, USE OR DISCLOSURE, IN WHOLE OR IN PART, OF THE DESIGN CONTAINED HEREIN TO OTHERS IS PROHIBITED WITHOUT THE WRITTEN CONSENT OF STAINLESS MOTORS, INC.

© COPYRIGHT STAINLESS MOTORS, INC. ALL RIGHTS RESERVED. YEAR OF COPYRIGHT IS FIRST YEAR INDICATED ON THE DRAWING.

DO NOT SCALE DRAWING

UNLESS OTHERWISE SPECIFIED

DIMENSIONS ARE IN INCHES

DIMENSIONS AND SURFACE TEXTURE DESIGNATIONS APPLY PRIOR TO FINISH

DEBURR AND BREAK ALL SHARP EDGES 0.005 - 0.015

MATERIAL: T304 EXTERIOR,  
17-4 H1150 SHAFT

FINISH: #4 LINE

GENERAL TOLERANCES:

.X =  $\pm$ 0.015  
.XX =  $\pm$ 0.010  
.XXX =  $\pm$ 0.005

FRACTIONAL =  $\pm$ 1/64  
ANGULAR =  $\pm$ 1/2°

**STAINLESS  
MOTORS INC.**

DRAWN: RSC

CHECK:

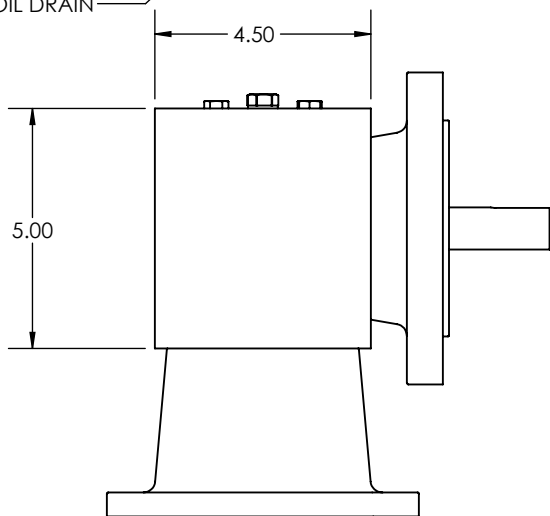
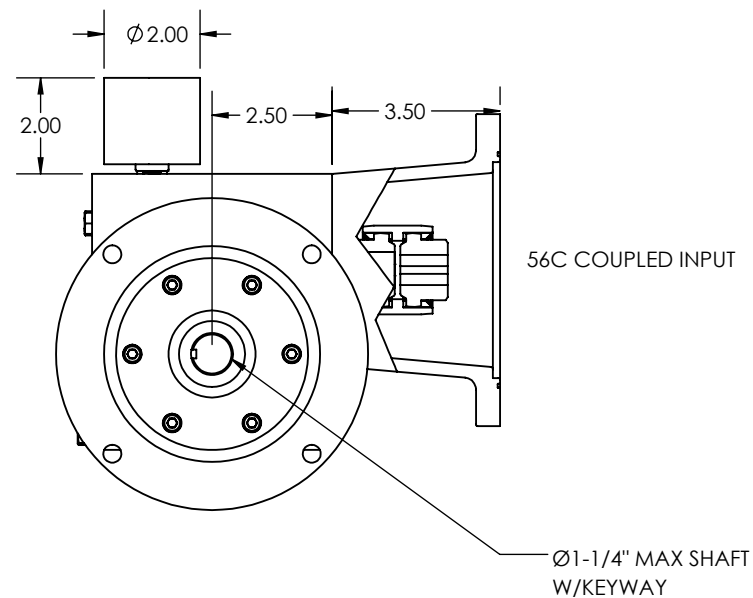
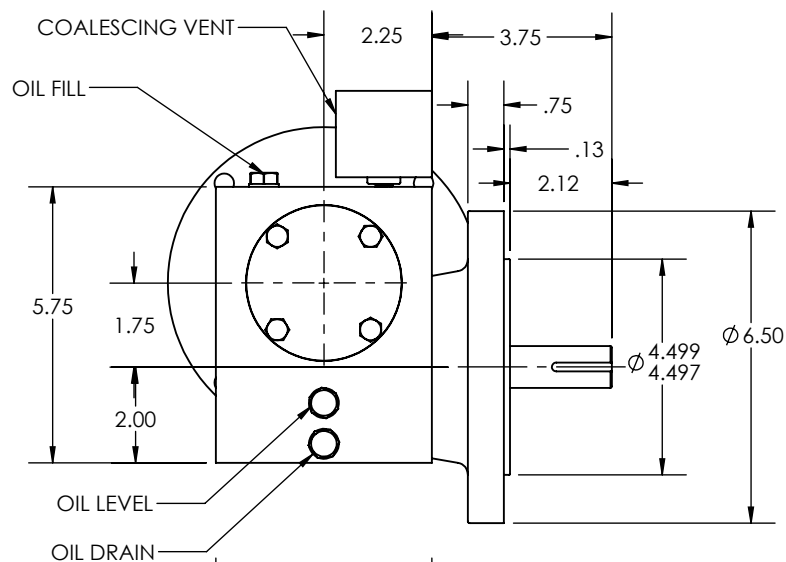
ENG: JO

DATE: 9/29/2017

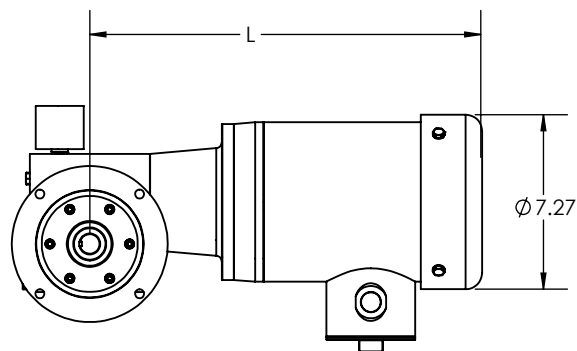
RA175, 1A MOUNTING,  
SOLID SHAFT,  
56C COUPLED INPUT

REFERENCE  
DRAWING:

NUMBER: F:\Website\GEARBOXES\RA\RA175SRXXGXXX01A



56C COUPLED INPUT



REDUCTION RATIO	L			
	1/4 HP	1/2 HP	1 HP	1-1/2 HP
5	---	---	---	18.85
7.5	---	---	18.35	---
10	---	---	18.35	---
15	---	16.35	---	---
20	---	16.35	---	---
25	---	16.35	---	---
30	16.35	---	---	---
40	16.35	---	---	---
50	16.35	---	---	---
60	16.35	---	---	---

NOTE: VALUES FOR 56C, 143TC, 145TC; 4 POLE;  
TEFC MOTORS

1. OTHER SHAFT SIZES AVAILABLE
2. OTHER FLANGE SIZES AVAILABLE

THIS DRAWING CONTAINS INFORMATION WHICH IS PROPRIETARY AND CONFIDENTIAL TO STAINLESS MOTORS, INC., AND IS TRANSMITTED IN CONFIDENCE. THE REPRODUCTION, USE OR DISCLOSURE, IN WHOLE OR IN PART, OF THE DESIGN CONTAINED HEREIN TO OTHERS IS PROHIBITED WITHOUT THE WRITTEN CONSENT OF STAINLESS MOTORS, INC.

© COPYRIGHT STAINLESS MOTORS, INC. ALL RIGHTS RESERVED. YEAR OF COPYRIGHT IS FIRST YEAR INDICATED ON THE DRAWING.

DO NOT SCALE DRAWING	MATERIAL: T304 EXTERIOR, 17-4 H1150 SHAFT
UNLESS OTHERWISE SPECIFIED	FINISH: #4 LINE
DIMENSIONS ARE IN INCHES	GENERAL TOLERANCES:
DIMENSIONS AND SURFACE TEXTURE DESIGNATIONS APPLY PRIOR TO FINISH	.X = +/- 0.015
DEBURR AND BREAK ALL SHARP EDGES 0.005 - 0.015	.XX = +/- 0.010
	.XXX = +/- 0.005
	FRACTIONAL = +/- 1/64
	ANGULAR = +/- 1/2°
REFERENCE DRAWING:	
NUMBER: F:\Website\GEARBOXES\RA\RA175SRXXGXXX01N	

**STAINLESS  
MOTORS INC.**

DRAWN: RSC  
CHECK:  
ENG: JO  
DATE: 9/29/2017

RA175, 1N MOUNTING,  
FLANGED OUTPUT,  
SOLID SHAFT,  
56C COUPLED INPUT

NOTES: