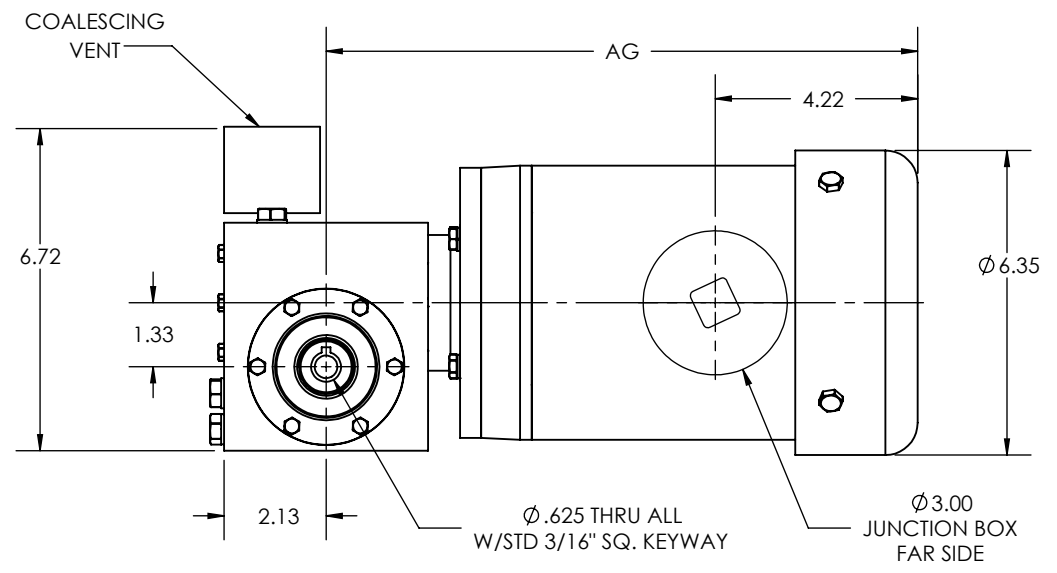
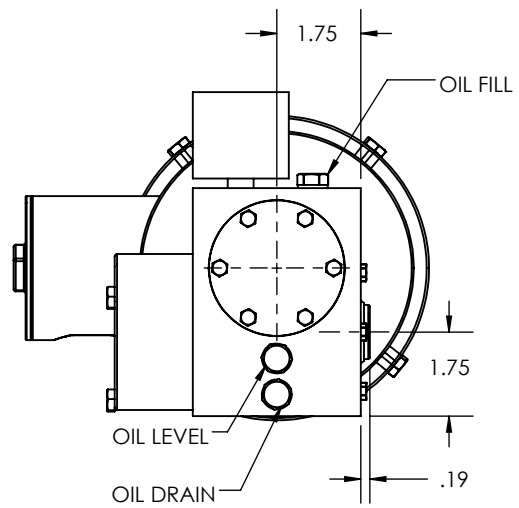
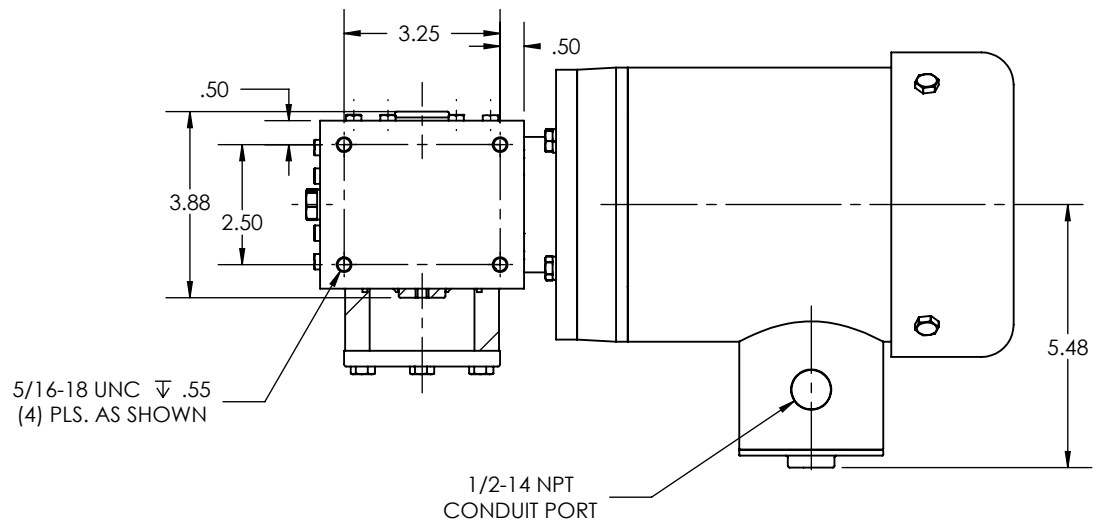


REVISIONS			
REV.	DESCRIPTION	BY	DATE



AG DIMENSION		
RATIO	OUTPUT RPM	0.25 HP
5	348	12.32"
7.5	232	
10	174	
15	116	
20	87	
25	70	
30	58	



- OTHER SHAFT SIZES AVAILABLE
- OTHER RATIOS AVAILABLE UPON REQUEST

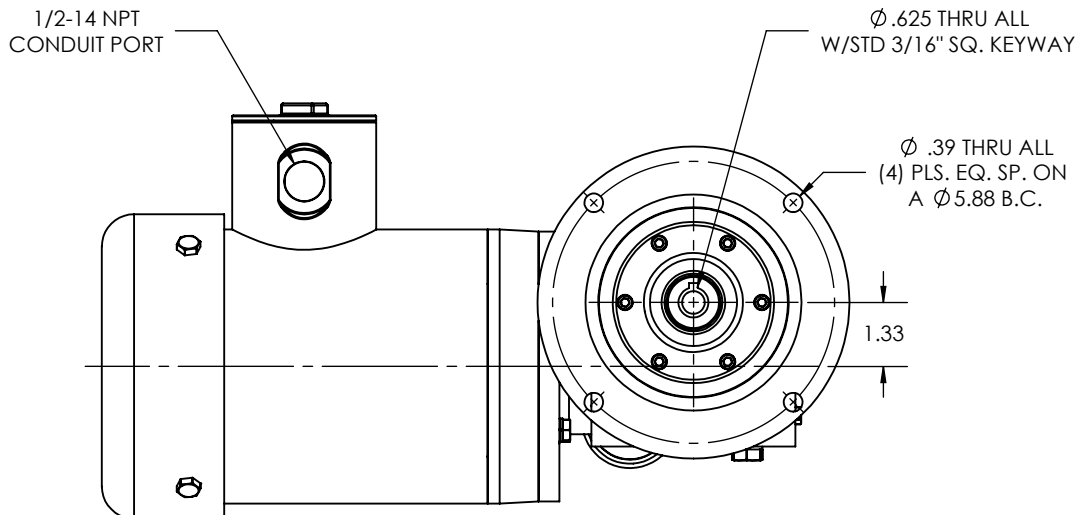
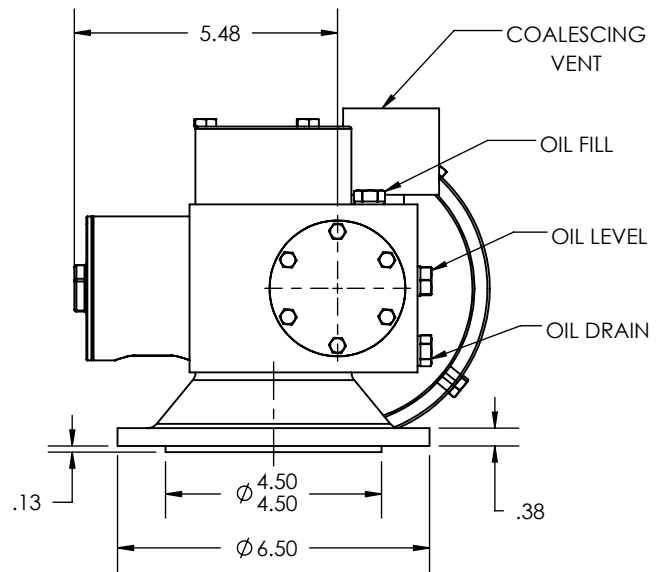
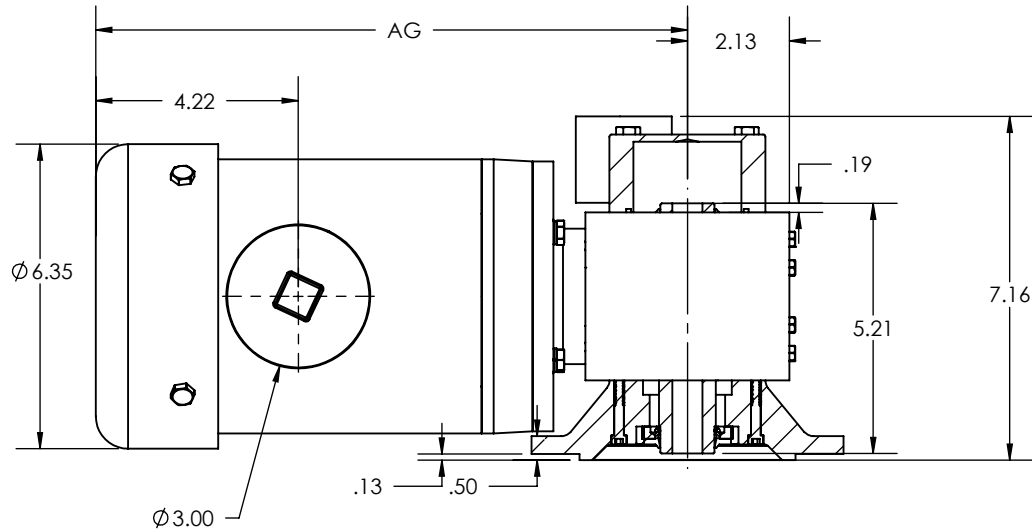
THIS DRAWING CONTAINS INFORMATION WHICH IS PROPRIETARY AND CONFIDENTIAL TO STAINLESS MOTORS, INC. AND IS TRANSMITTED IN CONFIDENCE. THE REPRODUCTION, USE OR DISCLOSURE, IN WHOLE OR IN PART, OF THE DESIGN CONTAINED HEREIN TO OTHERS IS PROHIBITED WITHOUT THE WRITTEN CONSENT OF STAINLESS MOTORS, INC.

© COPYRIGHT STAINLESS MOTORS, INC. ALL RIGHTS RESERVED. YEAR OF COPYRIGHT IS FIRST YEAR INDICATED ON THE DRAWING.

DO NOT SCALE DRAWING	MATERIAL: T304 EXTERIOR 17-4 H1 150 SHAFT	<b>STAINLESS MOTORS INC.</b>
UNLESS OTHERWISE SPECIFIED	FINISH: #4 LINE	
DIMENSIONS ARE IN INCHES DIMENSIONS AND SURFACE TEXTURE DESIGNATIONS APPLY PRIOR TO FINISH	GENERAL TOLERANCES: .X = +/-0.015 .XX = +/-0.010 .XXX = +/-0.005	DRAWN: WJK CHECK: JO ENG: JO DATE: 1/28/2018
DEBURR AND BREAK ALL SHARP EDGES 0.005 - 0.015	FRACTIONAL = +/- 1/64 ANGULAR = +/- 1/2°	RA133 FRAME ORIENTATION 1 MOUNTING SURFACE A TEFC, SANIFAN
REFERENCE DRAWING NUMBER: F:\Website\GEARBOXES\RA\RA133HRXXXXXX01A		

NOTES:

REVISIONS			
REV.	DESCRIPTION	BY	DATE



AG DIMENSION		
RATIO	OUTPUT RPM	0.25 HP
5	348	12.32"
7.5	232	
10	174	
15	116	
20	87	
25	70	
30	58	

- OTHER SHAFT SIZES AVAILABLE
- OTHER RATIOS AVAILABLE UPON REQUEST

THIS DRAWING CONTAINS INFORMATION WHICH IS PROPRIETARY AND CONFIDENTIAL TO STAINLESS MOTORS, INC. AND IS TRANSMITTED IN CONFIDENCE. THE REPRODUCTION, USE OR DISCLOSURE, IN WHOLE OR IN PART, OF THE DESIGN CONTAINED HEREIN TO OTHERS IS PROHIBITED WITHOUT THE WRITTEN CONSENT OF STAINLESS MOTORS, INC.

© COPYRIGHT STAINLESS MOTORS, INC. ALL RIGHTS RESERVED. YEAR OF COPYRIGHT IS FIRST YEAR INDICATED ON THE DRAWING.

DO NOT SCALE DRAWING  
UNLESS OTHERWISE SPECIFIED

DIMENSIONS ARE IN INCHES  
DIMENSIONS AND SURFACE TEXTURE DESIGNATIONS APPLY PRIOR TO FINISH

DEBURR AND BREAK ALL SHARP EDGES 0.005 - 0.015

MATERIAL: T304 EXTERIOR 17-4 H1150 SHAFT

FINISH: #4 LINE

GENERAL TOLERANCES:  
.X = +/- 0.015  
.XX = +/- 0.010  
.XXX = +/- 0.005

FRACTIONAL = +/- 1/64  
ANGULAR = +/- 1/2°

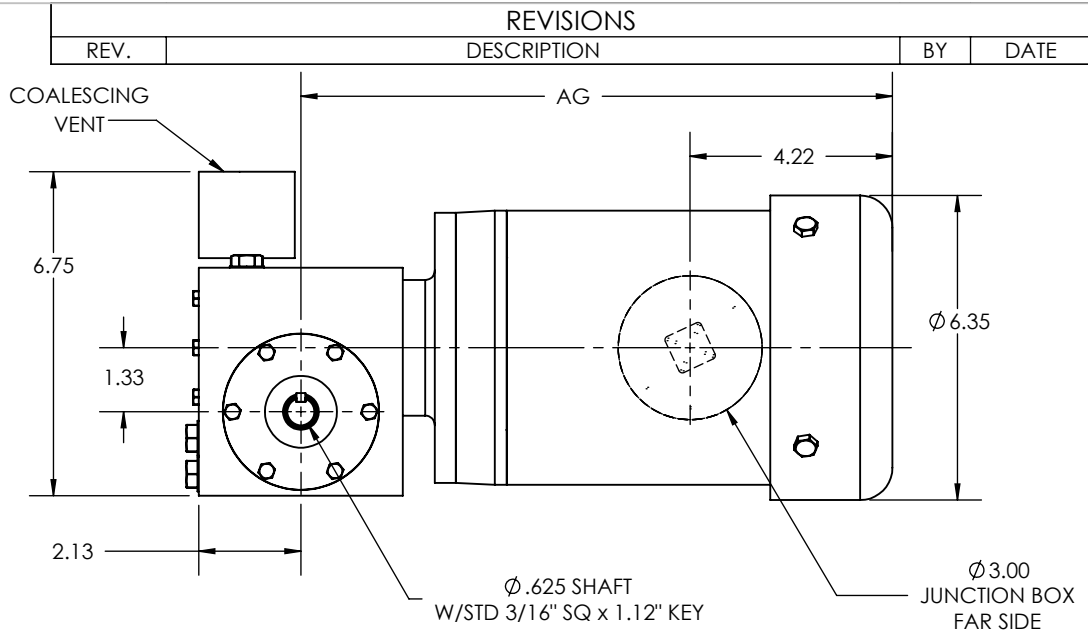
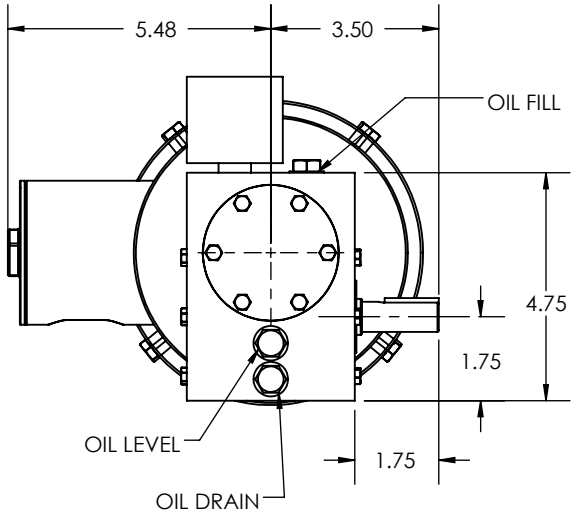
**STAINLESS MOTORS INC.**

DRAWN: WJK  
CHECK:  
ENG: JO  
DATE: 1/28/2019

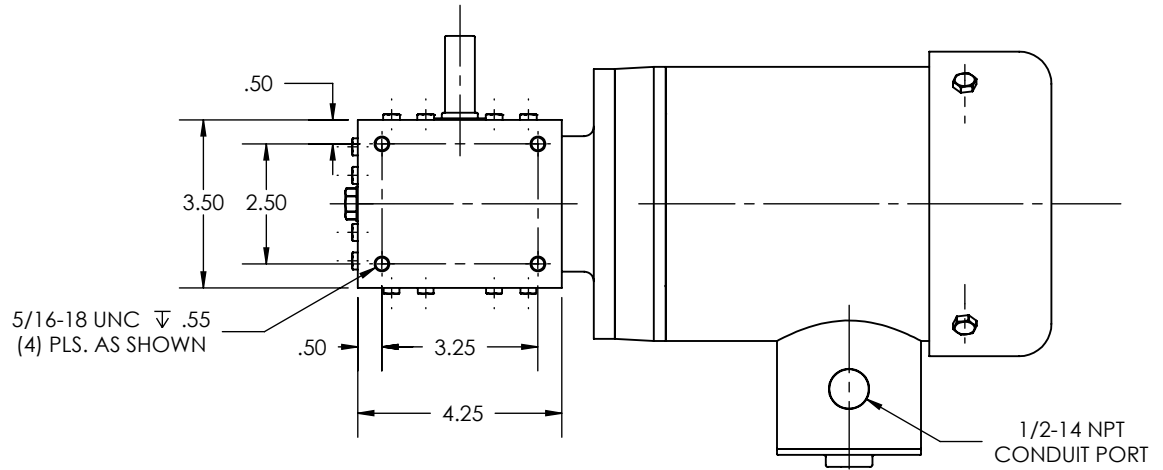
RA133 FRAME  
ORIENTATION 4  
MOUNTING SURFACE N  
TEFC, SANIFAN

NOTES:

REFERENCE DRAWING:  
NUMBER: F:\Website\GEARBOXES\RA\RA133HRXXXXX04N



AG DIMENSION		
RATIO	OUTPUT RPM	0.25 HP
5	348	12.32"
7.5	232	
10	174	
15	116	
20	87	
25	70	
30	58	



- NOTES:
1. OTHER SHAFT SIZES AVAILABLE
  2. OTHER RATIOS AVAILABLE UPON REQUEST

THIS DRAWING CONTAINS INFORMATION WHICH IS PROPRIETARY AND CONFIDENTIAL TO STAINLESS MOTORS, INC. AND IS TRANSMITTED IN CONFIDENCE. THE REPRODUCTION, USE OR DISCLOSURE, IN WHOLE OR IN PART, OF THE DESIGN CONTAINED HEREIN TO OTHERS IS PROHIBITED WITHOUT THE WRITTEN CONSENT OF STAINLESS MOTORS, INC.

© COPYRIGHT STAINLESS MOTORS, INC. ALL RIGHTS RESERVED. YEAR OF COPYRIGHT IS FIRST YEAR INDICATED ON THE DRAWING.

DO NOT SCALE DRAWING  
UNLESS OTHERWISE SPECIFIED

DIMENSIONS ARE IN INCHES  
DIMENSIONS AND SURFACE TEXTURE DESIGNATIONS APPLY PRIOR TO FINISH

DEBURR AND BREAK ALL SHARP EDGES 0.005 - 0.015

REFERENCE DRAWING:  
DRAWING NUMBER: F:\Website\GEARBOXES\RA\RA133R5XXXXXOA1

MATERIAL: T304 EXTERIOR 17-4 H1150 SHAFT

FINISH: #4 LINE

GENERAL TOLERANCES:  
.X = +/- 0.015  
.XX = +/- 0.010  
.XXX = +/- 0.005

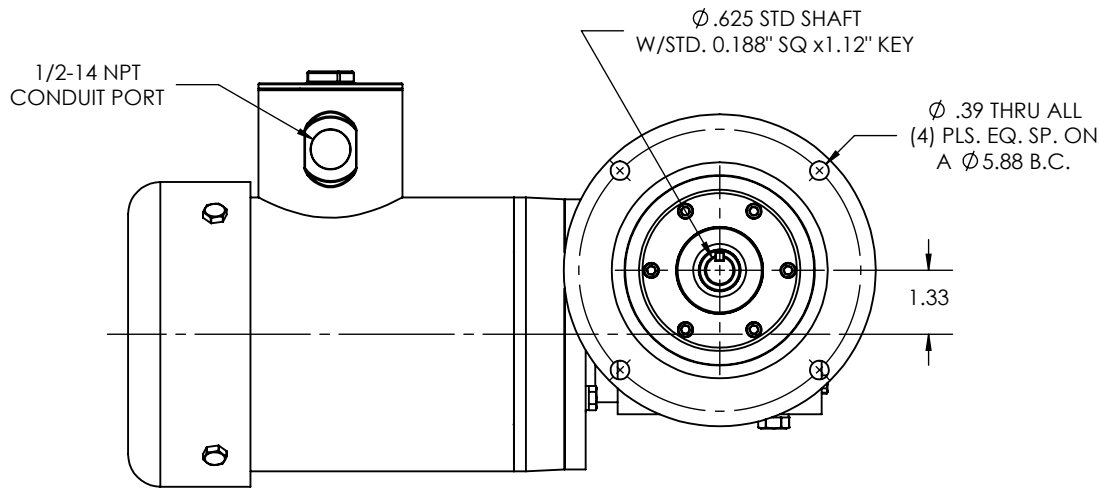
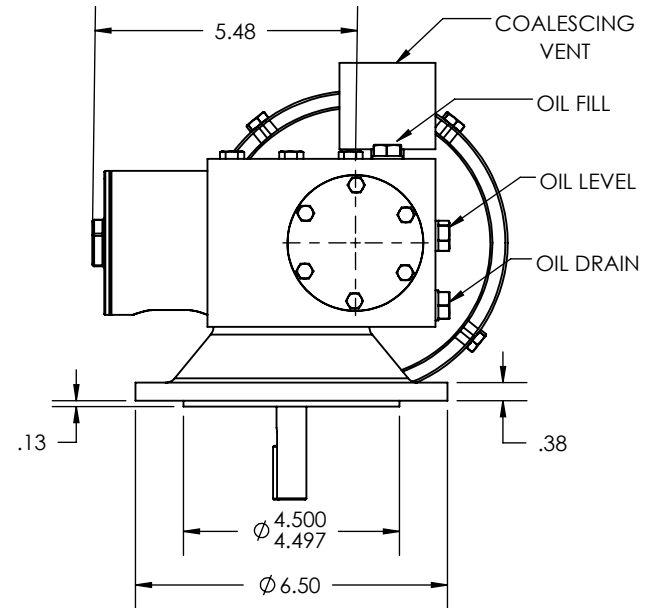
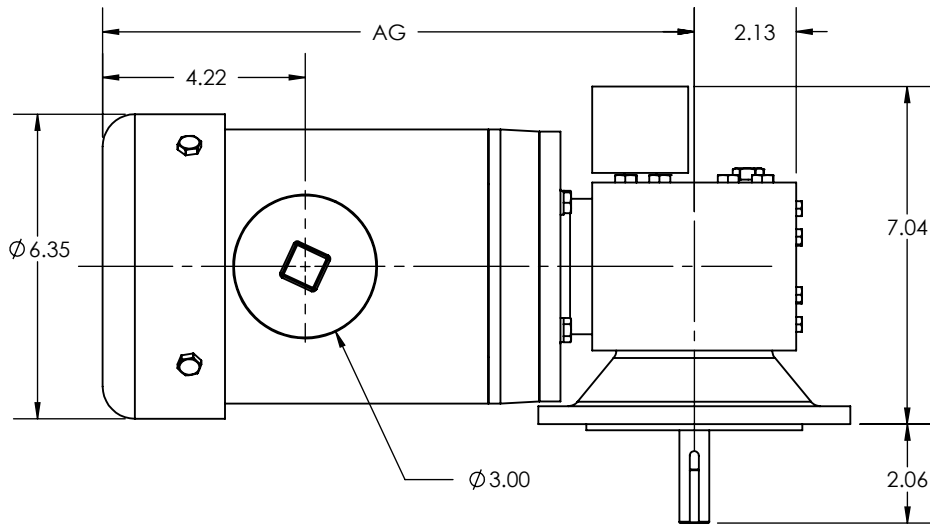
FRACTIONAL = +/- 1/64  
ANGULAR = +/- 1/2°

**STAINLESS MOTORS INC.**

DRAWN: WJK  
CHECK:  
ENG: JO  
DATE: 1/28/2019

RA133 FRAME ORIENTATION 1 MOUNTING SURFACE A TEFC, SANIFAN

REVISIONS			
REV.	DESCRIPTION	BY	DATE



AG DIMENSION		
RATIO	OUTPUT RPM	0.25 HP
5	348	12.32"
7.5	232	
10	174	
15	116	
20	87	
25	70	
30	58	

- OTHER SHAFT SIZES AVAILABLE
- OTHER RATIOS AVAILABLE UPON REQUEST

THIS DRAWING CONTAINS INFORMATION WHICH IS PROPRIETARY AND CONFIDENTIAL TO STAINLESS MOTORS, INC., AND IS TRANSMITTED IN CONFIDENCE. THE REPRODUCTION, USE OR DISCLOSURE, IN WHOLE OR IN PART, OF THE DESIGN CONTAINED HEREIN TO OTHERS IS PROHIBITED WITHOUT THE WRITTEN CONSENT OF STAINLESS MOTORS, INC.

© COPYRIGHT STAINLESS MOTORS, INC. ALL RIGHTS RESERVED. YEAR OF COPYRIGHT IS FIRST YEAR INDICATED ON THE DRAWING.

DO NOT SCALE DRAWING	MATERIAL: T304 EXTERIOR 17-4 H1150 SHAFT	<b>STAINLESS MOTORS INC.</b>
UNLESS OTHERWISE SPECIFIED	FINISH: #4 LINE	
DIMENSIONS ARE IN INCHES DIMENSIONS AND SURFACE TEXTURE DESIGNATIONS APPLY PRIOR TO FINISH	GENERAL TOLERANCES: .X = +/- 0.015 .XX = +/- 0.010 .XXX = +/- 0.005	DRAWN: WJK
DEBURR AND BREAK ALL SHARP EDGES 0.005 - 0.015	FRACTIONAL = +/- 1/64 ANGULAR = +/- 1/2°	CHECK: JO
REFERENCE DRAWING: F:\Website\GEARBOXES\RA\RA133SRXXXXXO4N		DATE: 1/28/2019
		RA133 FRAME ORIENTATION 4 MOUNTING SURFACE N TEFC, SANIFAN

NOTES: