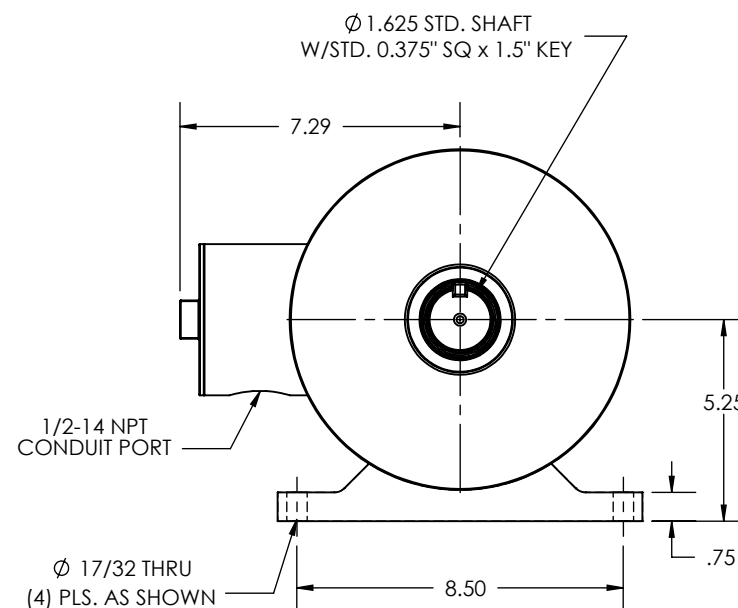
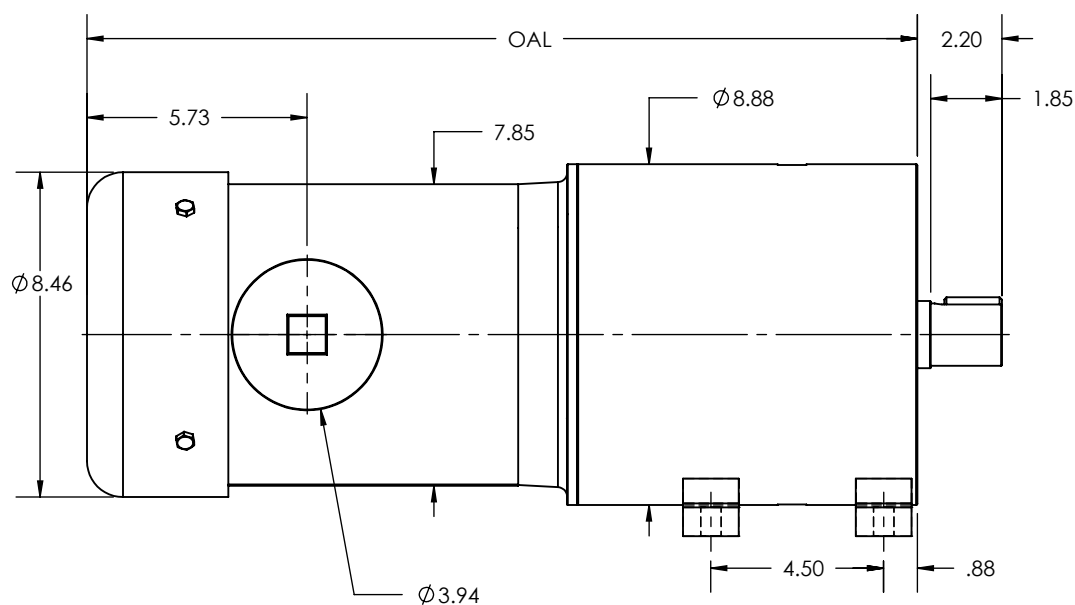


OAL DIMENSION			
RATIO	OUTPUT RPM	1.5-3 HP	5 HP
3	580	20.07"	22.07"
3.67	474		
4.2	414		
5	348		
9	193	21.62"	23.62"
12.6	138		
15	116		
17.6	98		
21	82		
25	69		

REVISIONS			
REV.	DESCRIPTION	BY	DATE



1. OTHER SHAFT SIZES AVAILABLE
2. GREASE OR OIL LUBRICATION AVAILABLE
3. OTHER RATIOS AVAILABLE UPON REQUEST

THIS DRAWING CONTAINS INFORMATION WHICH IS PROPRIETARY AND CONFIDENTIAL TO STAINLESS MOTORS, INC., AND IS TRANSMITTED IN CONFIDENCE. THE REPRODUCTION, USE OR DISCLOSURE, IN WHOLE OR IN PART, OF THE DESIGN CONTAINED HEREIN TO OTHERS IS PROHIBITED WITHOUT THE WRITTEN CONSENT OF STAINLESS MOTORS, INC.

© COPYRIGHT STAINLESS MOTORS, INC. ALL RIGHTS RESERVED. YEAR OF COPYRIGHT IS FIRST YEAR INDICATED ON THE DRAWING.

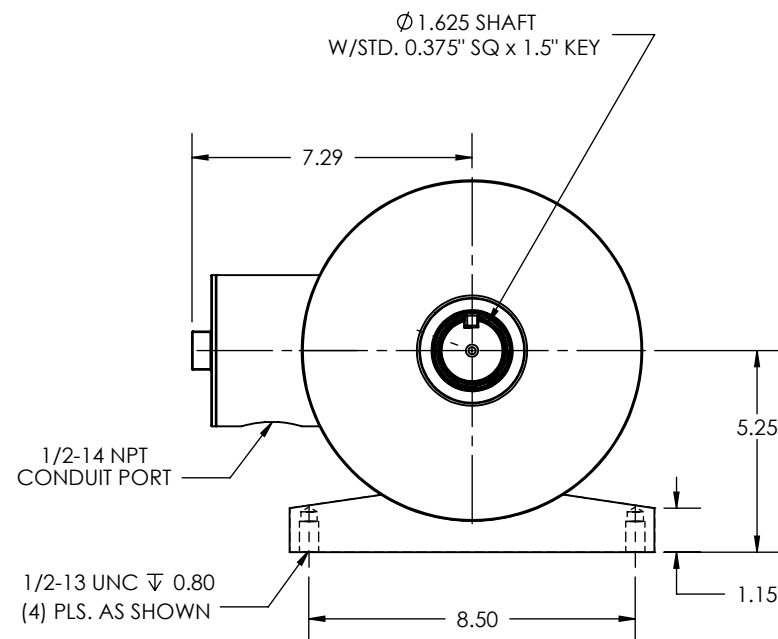
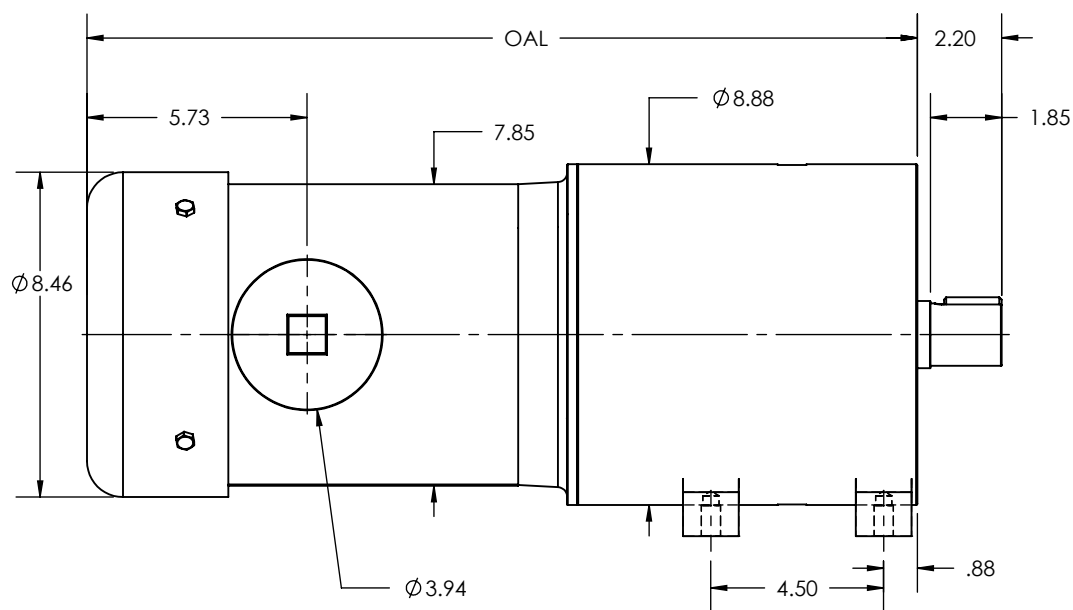
DO NOT SCALE DRAWING	MATERIAL: T304 EXTERIOR 17-4 H1150 SHAFT	<b>STAINLESS MOTORS INC.</b>	
UNLESS OTHERWISE SPECIFIED	FINISH: #4 LINE		
DIMENSIONS ARE IN INCHES	GENERAL TOLERANCES:	DRAWN: WJK	IL880 FRAME FOOT MOUNT TEFC, THRU FOOTED SANIFAN
DIMENSIONS AND SURFACE TEXTURE DESIGNATIONS APPLY PRIOR TO FINISH	.X = +/- 0.015 .XX = +/- 0.010 .XXX = +/- 0.005	CHECK:	
DEBURR AND BREAK ALL SHARP EDGES 0.005 - 0.015	FRACTIONAL = +/- 1/64 ANGULAR = +/- 1/2°	ENG: JO	
		DATE: 1/28/2019	

NOTES:

REFERENCE DRAWING: F:\Website\GEARBOXES\IL\IL880XXTCXXX-180

OAL DIMENSION					
RATIO	OUTPUT RPM	1.5HP	2HP	3HP	5HP
3	580	----	----	----	23.62"
3.67	474	----	----	----	23.62"
4.2	414	----	----	----	23.62"
5	348	----	----	----	23.62"
9	193	----	----	----	23.62"
12.6	138	----	----	22.07"	23.62"
15	116	----	----	22.07"	23.62"
17.6	98	----	----	22.07"	23.62"
21	82	----	21.37"	22.07"	23.62"
25	69	20.07"	21.37"	22.07"	23.62"

REVISIONS			
REV.	DESCRIPTION	BY	DATE



1. OTHER SHAFT SIZES AVAILABLE
2. GREASE OR OIL LUBRICATION AVAILABLE
3. OTHER RATIOS AVAILABLE UPON REQUEST

THIS DRAWING CONTAINS INFORMATION WHICH IS PROPRIETARY AND CONFIDENTIAL TO STAINLESS MOTORS, INC., AND IS TRANSMITTED IN CONFIDENCE. THE REPRODUCTION, USE OR DISCLOSURE, IN WHOLE OR IN PART, OF THE DESIGN CONTAINED HEREIN TO OTHERS IS PROHIBITED WITHOUT THE WRITTEN CONSENT OF STAINLESS MOTORS, INC.

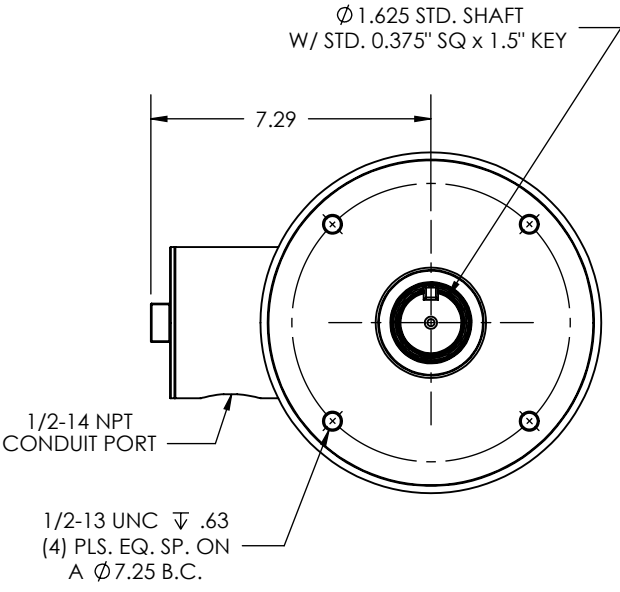
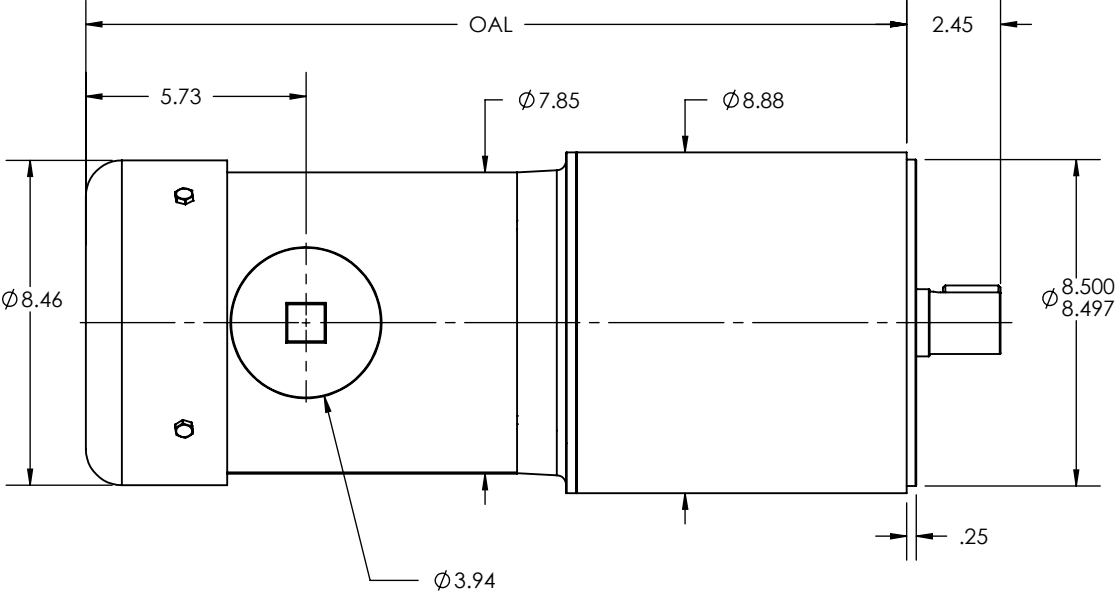
© COPYRIGHT STAINLESS MOTORS, INC. ALL RIGHTS RESERVED. YEAR OF COPYRIGHT IS FIRST YEAR INDICATED ON THE DRAWING.

DO NOT SCALE DRAWING	MATERIAL: T304 EXTERIOR 17-4 H1150 SHAFT	<b>STAINLESS MOTORS INC.</b>	
UNLESS OTHERWISE SPECIFIED	FINISH: #4 LINE		
DIMENSIONS ARE IN INCHES DIMENSIONS AND SURFACE TEXTURE DESIGNATIONS APPLY PRIOR TO FINISH	GENERAL TOLERANCES: .X = +/- 0.015 .XX = +/- 0.010 .XXX = +/- 0.005	DRAWN: WJK CHECK: JO ENG: JO DATE: 1/28/2019	IL880 FRAME FOOT MOUNT TEFC, BLIND FOOTED SANIFAN
DEBURR AND BREAK ALL SHARP EDGES 0.005 - 0.015	FRACTIONAL = +/- 1/64 ANGULAR = +/- 1/2°	REFERENCE DRAWING: F:\Website\GEARBOXES\IL\IL880XXBCXXX-180	

NOTES:

OAL DIMENSION			
RATIO	OUTPUT RPM	1.5 - 3 HP	5 HP
3	580	20.55"	22.55"
3.67	474		
4.2	414		
5	348		
9	193	21.37"	23.37"
12.6	138		
15	116		
17.6	98		
21	82		
25	69		

REVISIONS			
REV.	DESCRIPTION	BY	DATE



1. OTHER SHAFT SIZES AVAILABLE
2. GREASE OR OIL LUBRICATION AVAILABLE
3. OTHER RATIOS AVAILABLE UPON REQUEST

THIS DRAWING CONTAINS INFORMATION WHICH IS PROPRIETARY AND CONFIDENTIAL TO STAINLESS MOTORS, INC., AND IS TRANSMITTED IN CONFIDENCE. THE REPRODUCTION, USE OR DISCLOSURE, IN WHOLE OR IN PART, OF THE DESIGN CONTAINED HEREIN TO OTHERS IS PROHIBITED WITHOUT THE WRITTEN CONSENT OF STAINLESS MOTORS, INC.

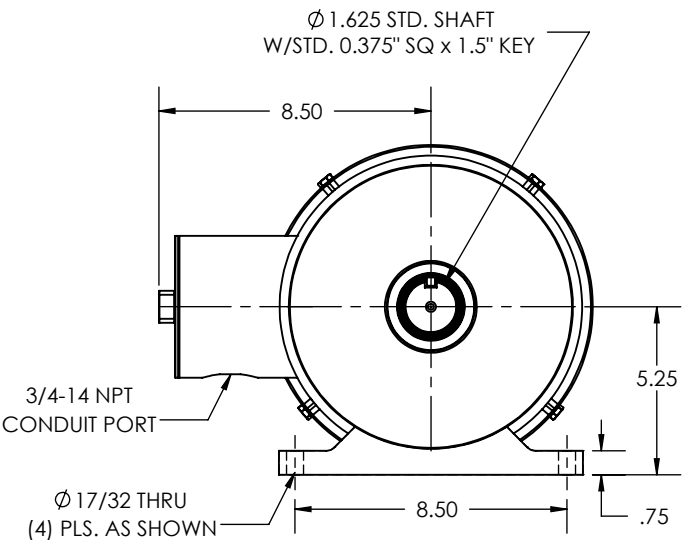
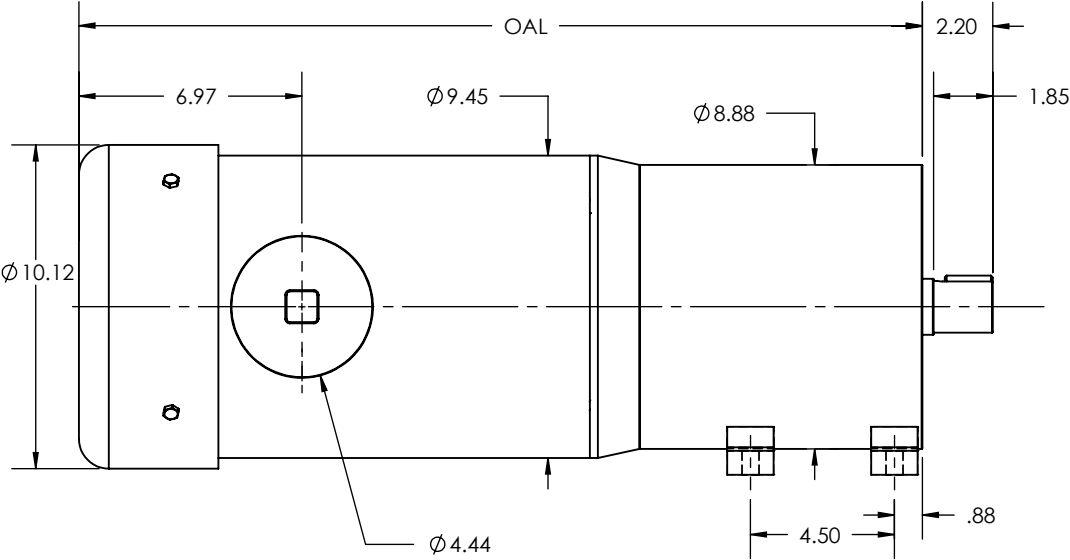
© COPYRIGHT STAINLESS MOTORS, INC. ALL RIGHTS RESERVED. YEAR OF COPYRIGHT IS FIRST YEAR INDICATED ON THE DRAWING.

DO NOT SCALE DRAWING	MATERIAL: T304 EXTERIOR 17-4 H1150 SHAFT	<b>STAINLESS MOTORS INC.</b>	
UNLESS OTHERWISE SPECIFIED	FINISH: #4 LINE		
DIMENSIONS ARE IN INCHES DIMENSIONS AND SURFACE TEXTURE DESIGNATIONS APPLY PRIOR TO FINISH	GENERAL TOLERANCES: .X = +/- 0.015 .XX = +/- 0.010 .XXX = +/- 0.005	DRAWN: WJK CHECK: ENG: JO DATE: 1/28/2019	IL880 FRAME C-FACE MOUNT TEFC, NON FOOTED SANIFAN
DEBURR AND BREAK ALL SHARP EDGES 0.005 - 0.015	FRACTIONAL = +/- 1/64 ANGULAR = +/- 1/2°	REFERENCE DRAWING: F:\Website\GEARBOXES\IL\IL880XXCC\XXXX-180	

NOTES:

OAL DIMENSION		
RATIO	OUTPUT RPM	7.5 - 10 HP
3	580	24.67"
3.67	474	
4.2	414	
5	348	
9	193	26.22"
12.6	138	
15	116	
17.6	98	
21	82	
25	69	

REVISIONS			
REV.	DESCRIPTION	BY	DATE



1. OTHER SHAFT SIZES AVAILABLE
2. GREASE OR OIL LUBRICATION AVAILABLE
3. OTHER RATIOS AVAILABLE UPON REQUEST

THIS DRAWING CONTAINS INFORMATION WHICH IS PROPRIETARY AND CONFIDENTIAL TO STAINLESS MOTORS, INC., AND IS TRANSMITTED IN CONFIDENCE. THE REPRODUCTION, USE OR DISCLOSURE, IN WHOLE OR IN PART, OF THE DESIGN CONTAINED HEREIN TO OTHERS IS PROHIBITED WITHOUT THE WRITTEN CONSENT OF STAINLESS MOTORS, INC.

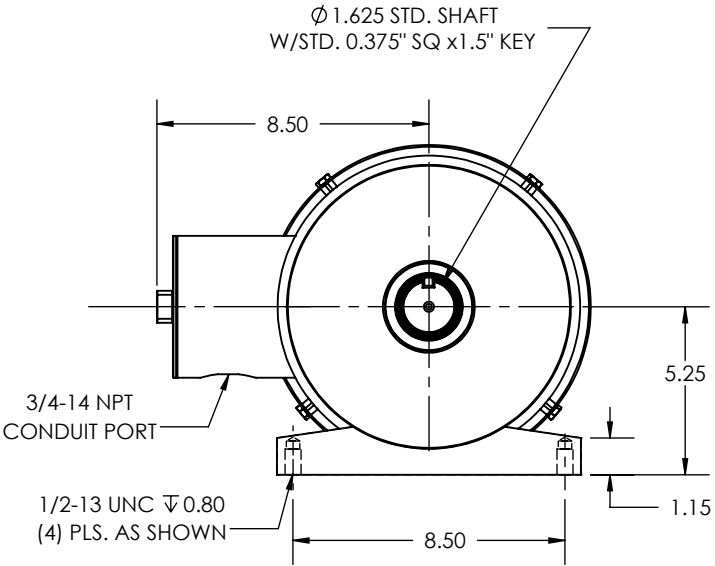
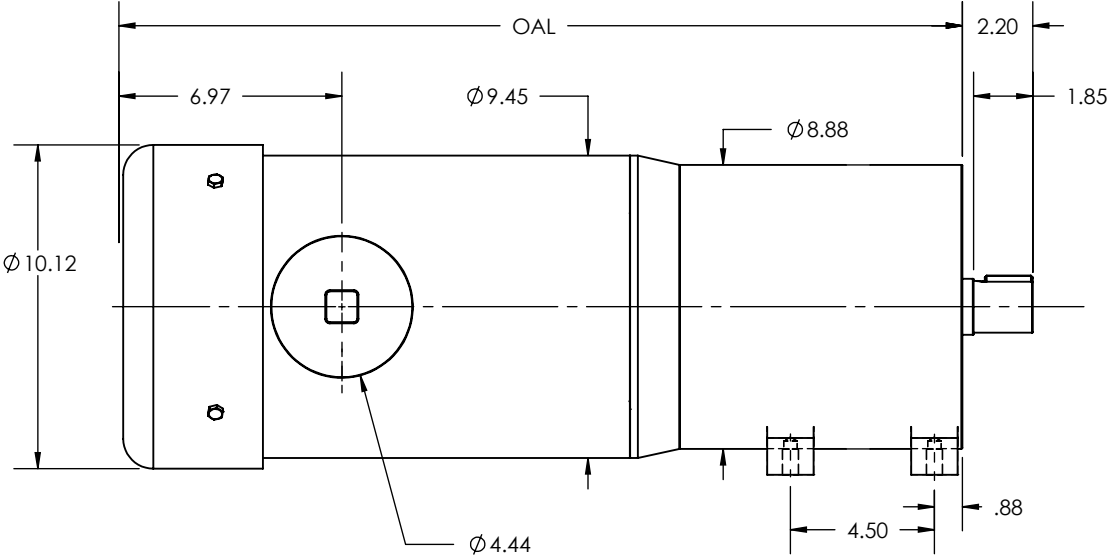
© COPYRIGHT STAINLESS MOTORS, INC. ALL RIGHTS RESERVED. YEAR OF COPYRIGHT IS FIRST YEAR INDICATED ON THE DRAWING.

DO NOT SCALE DRAWING		MATERIAL: T304 EXTERIOR 17-4 H1150 SHAFT		STAINLESS MOTORS INC.	
UNLESS OTHERWISE SPECIFIED		FINISH: #4 LINE			
DIMENSIONS ARE IN INCHES		GENERAL TOLERANCES:  X = +/-0.015 XX = +/- 0.010 XXX = +/- 0.005		DRAWN: WJK	IL880 FRAME FOOT MOUNT TEFC, THRU FOOTED SANIFAN
DIMENSIONS AND SURFACE TEXTURE DESIGNATIONS APPLY PRIOR TO FINISH				CHECK:	
DEBURR AND BREAK ALL SHARP EDGES 0.005 - 0.015		FRACTIONAL = +/- 1/64 ANGULAR = +/- 1/2°		ENG: JO	
REFERENCE DRAWING: DRAWING:		DATE: 1/28/2019			
DRAWING NUMBER: F:\Website\GEARBOXES\IL\IL880XXTCXXX-210					

NOTES:

OAL DIMENSION		
RATIO	OUTPUT RPM	7.5 - 10 HP
3	580	24.67"
3.67	474	
4.2	414	
5	348	
9	193	26.22"
12.6	138	
15	116	
17.6	98	
21	82	
25	69	

REVISIONS			
REV.	DESCRIPTION	BY	DATE



1. OTHER SHAFT SIZES AVAILABLE
2. GREASE OR OIL LUBRICATION AVAILABLE
3. OTHER RATIOS AVAILABLE UPON REQUEST

# NOTES:

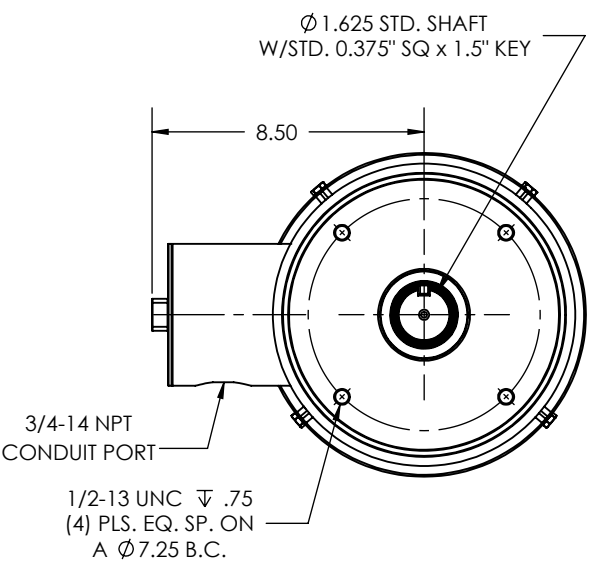
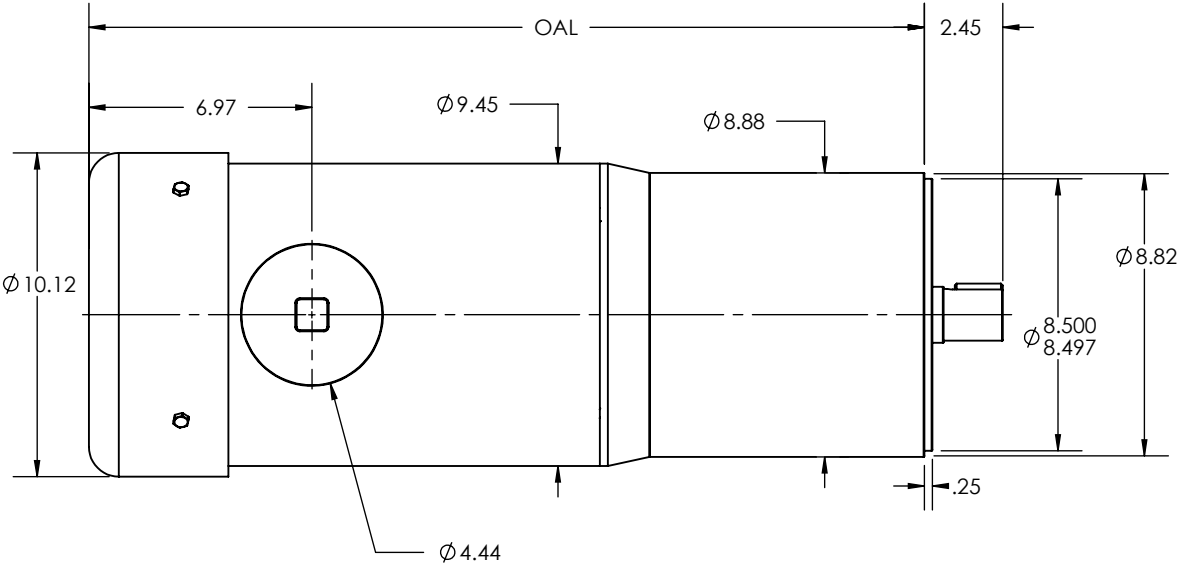
THIS DRAWING CONTAINS INFORMATION WHICH IS PROPRIETARY AND CONFIDENTIAL TO STAINLESS MOTORS, INC., AND IS TRANSMITTED IN CONFIDENCE. THE REPRODUCTION, USE OR DISCLOSURE, IN WHOLE OR IN PART, OF THE DESIGN CONTAINED HEREIN TO OTHERS IS PROHIBITED WITHOUT THE WRITTEN CONSENT OF STAINLESS MOTORS, INC.

© COPYRIGHT STAINLESS MOTORS, INC. ALL RIGHTS RESERVED. YEAR OF COPYRIGHT IS FIRST YEAR INDICATED ON THE DRAWING.

DO NOT SCALE DRAWING	MATERIAL: T304 EXTERIOR 17-4 H1150 SHAFT	<b>STAINLESS MOTORS INC.</b>	
UNLESS OTHERWISE SPECIFIED	FINISH: #4 LINE		
DIMENSIONS ARE IN INCHES DIMENSIONS AND SURFACE TEXTURE DESIGNATIONS APPLY PRIOR TO FINISH	GENERAL TOLERANCES: .X = +/- 0.015 .XX = +/- 0.010 .XXX = +/- 0.005	DRAWN: WJK CHECK: ENG: JO DATE: 1/28/2019	IL880 FRAME FOOT MOUNT TEFC, BLIND FOOTED SANIFAN
DEBURR AND BREAK ALL SHARP EDGES 0.005 - 0.015	FRACTIONAL = +/- 1/64 ANGULAR = +/- 1/2°		
REFERENCE DRAWING: F:\Website\GEARBOXES\IL\IL880XXXBCXXX-210			

OAL DIMENSION		
RATIO	OUTPUT RPM	7.5 - 10 HP
3	580	24.42
3.67	474	
4.2	414	
5	348	
9	193	25.97
12.6	138	
15	116	
17.6	98	
21	82	
25	69	

REVISIONS			
REV.	DESCRIPTION	BY	DATE



1. OTHER SHAFT SIZES AVAILABLE
2. GREASE OR OIL LUBRICATION AVAILABLE
3. OTHER RATIOS AVAILABLE UPON REQUEST

THIS DRAWING CONTAINS INFORMATION WHICH IS PROPRIETARY AND CONFIDENTIAL TO STAINLESS MOTORS, INC., AND IS TRANSMITTED IN CONFIDENCE. THE REPRODUCTION, USE OR DISCLOSURE, IN WHOLE OR IN PART, OF THE DESIGN CONTAINED HEREIN TO OTHERS IS PROHIBITED WITHOUT THE WRITTEN CONSENT OF STAINLESS MOTORS, INC.

© COPYRIGHT STAINLESS MOTORS, INC. ALL RIGHTS RESERVED. YEAR OF COPYRIGHT IS FIRST YEAR INDICATED ON THE DRAWING.

DO NOT SCALE DRAWING	MATERIAL: T304 EXTERIOR 17-4 H1150 SHAFT	<b>STAINLESS MOTORS INC.</b>	
UNLESS OTHERWISE SPECIFIED	FINISH: #4 LINE		
DIMENSIONS ARE IN INCHES	GENERAL TOLERANCES:	DRAWN: WJK	IL880 FRAME C-FACE MOUNT TEFC, NON FOOTED SANIFAN
DIMENSIONS AND SURFACE TEXTURE DESIGNATIONS APPLY PRIOR TO FINISH	.X = $\pm 0.015$ .XX = $\pm 0.010$ .XXX = $\pm 0.005$	CHECK:	
DEBURR AND BREAK ALL SHARP EDGES 0.005 - 0.015	FRACTIONAL = $\pm 1/64$ ANGULAR = $\pm 1/2^\circ$	ENG: JO	
		DATE: 1/28/2019	

NOTES:

REFERENCE DRAWING: F:\Website\GEARBOXES\IL\IL880XXXCDXXX-210