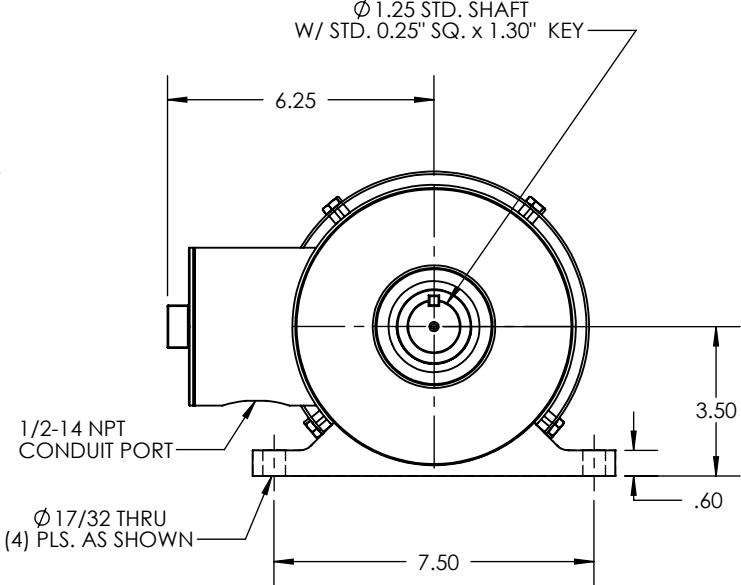
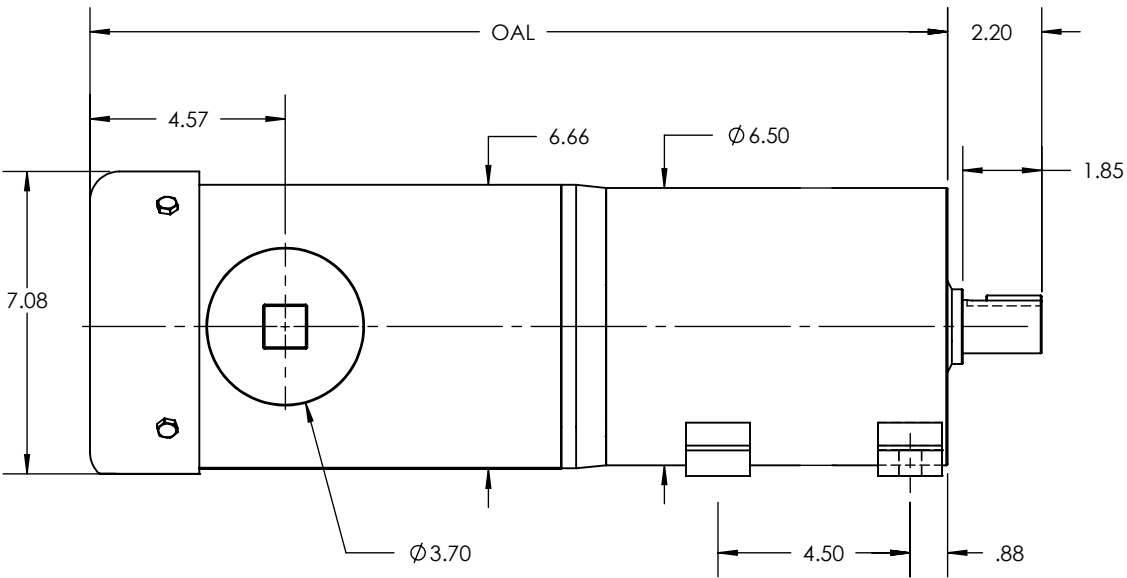


OAL DIMENSION						
RATIO	OUTPUT RPM	0.25-0.5 HP	0.75 HP	1 HP	1.5 HP	2 HP
3	580	17.11"	18.11"	18.61"	19.61"	19.61"
3.67	474					
4.2	414					
5	348					
9	193	18.10"	19.10"	19.60"	20.60"	20.60"
12.6	138					
15	116					
17.6	98					
21	82				---	---
25	69				---	---

REVISIONS			
REV.	DESCRIPTION	BY	DATE



- OTHER SHAFT SIZES AVAILABLE
- GREASE OR OIL LUBRICATION AVAILABLE
- OTHER RATIOS AVAILABLE UPON REQUEST

NOTES:

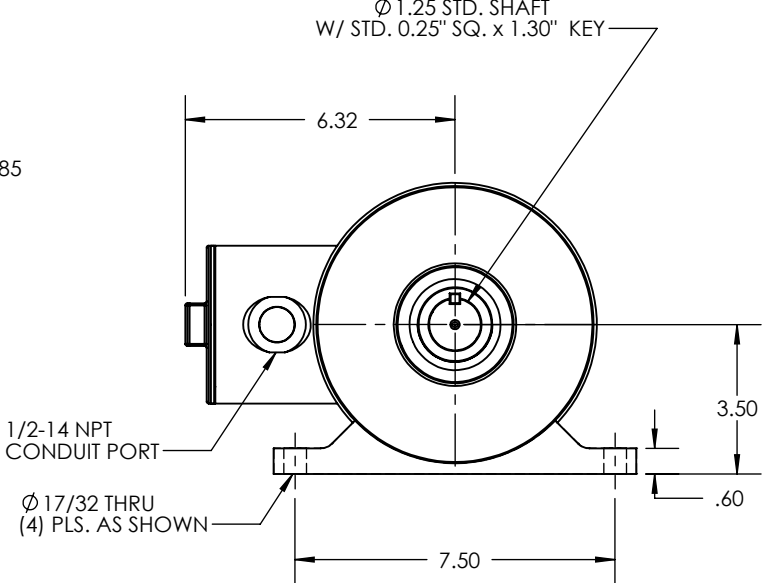
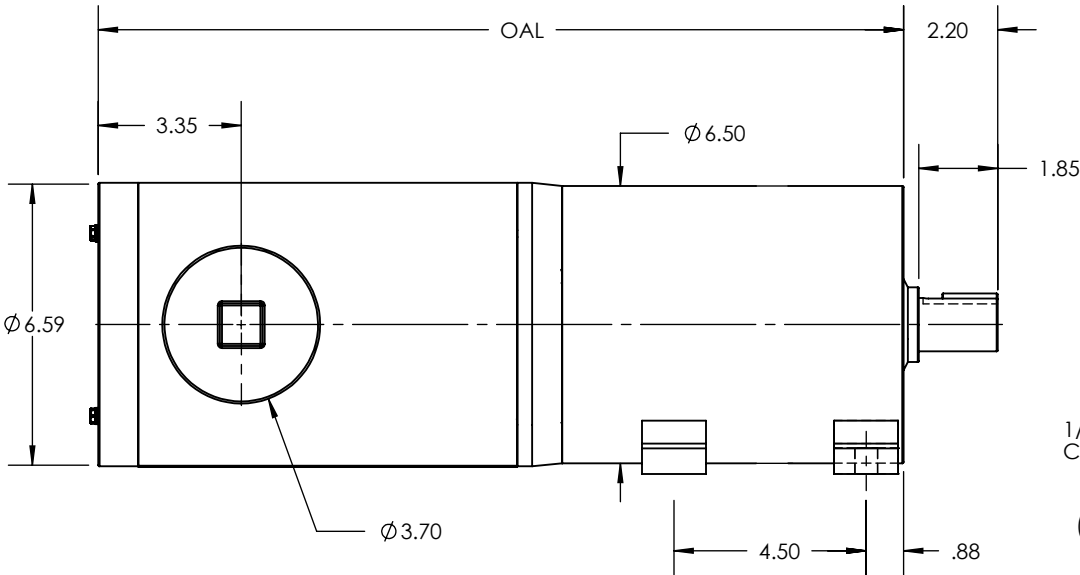
THIS DRAWING CONTAINS INFORMATION WHICH IS PROPRIETARY AND CONFIDENTIAL TO STAINLESS MOTORS, INC., AND IS TRANSMITTED IN CONFIDENCE. THE REPRODUCTION, USE OR DISCLOSURE, IN WHOLE OR IN PART, OF THE DESIGN CONTAINED HEREIN TO OTHERS IS PROHIBITED WITHOUT THE WRITTEN CONSENT OF STAINLESS MOTORS, INC.

© COPYRIGHT STAINLESS MOTORS, INC. ALL RIGHTS RESERVED. YEAR OF COPYRIGHT IS FIRST YEAR INDICATED ON THE DRAWING.

DO NOT SCALE DRAWING	MATERIAL: T304 EXTERIOR 17-4 H1150 SHAFT	STAINLESS MOTORS INC.	
UNLESS OTHERWISE SPECIFIED	FINISH:  #4 LINE	DRAWN: WJK	IL650 FRAME FOOT MOUNT TEFC, THRU FOOT SANIFAN
DIMENSIONS ARE IN INCHES	GENERAL TOLERANCES:  .X = +/-0.015 .XX = +/- 0.010 .XXX = +/- 0.005  FRACTIONAL = +/- 1/64 ANGULAR = +/- 1/2°	CHECK:	
DIMENSIONS AND SURFACE TEXTURE DESIGNATIONS APPLY PRIOR TO FINISH		ENG: JO	
DEBURR AND BREAK ALL SHARP EDGES 0.005 - 0.015		DATE: 1/28/2019	
REFERENCE DRAWING: DRAWING F:\Website\GEARBOXES\IL\IL650XXXTA\XXXX-56 NUMBER:			

OAL DIMENSION						
RATIO	OUTPUT RPM	0.25-0.5 HP	0.75 HP	1 HP	1.5 HP	2 HP
3	580	16.39"	17.39"	17.89"	18.89"	18.89"
3.67	474					
4.2	414					
5	348					
9	193	17.38"	18.38"	18.88"	19.88"	19.88"
12.6	138					
15	116					
17.6	98					
21	82				---	---
25	69				---	---

REVISIONS			
REV.	DESCRIPTION	BY	DATE



- OTHER SHAFT SIZES AVAILABLE
- GREASE OR OIL LUBRICATION AVAILABLE
- OTHER RATIOS AVAILABLE UPON REQUEST

NOTES:

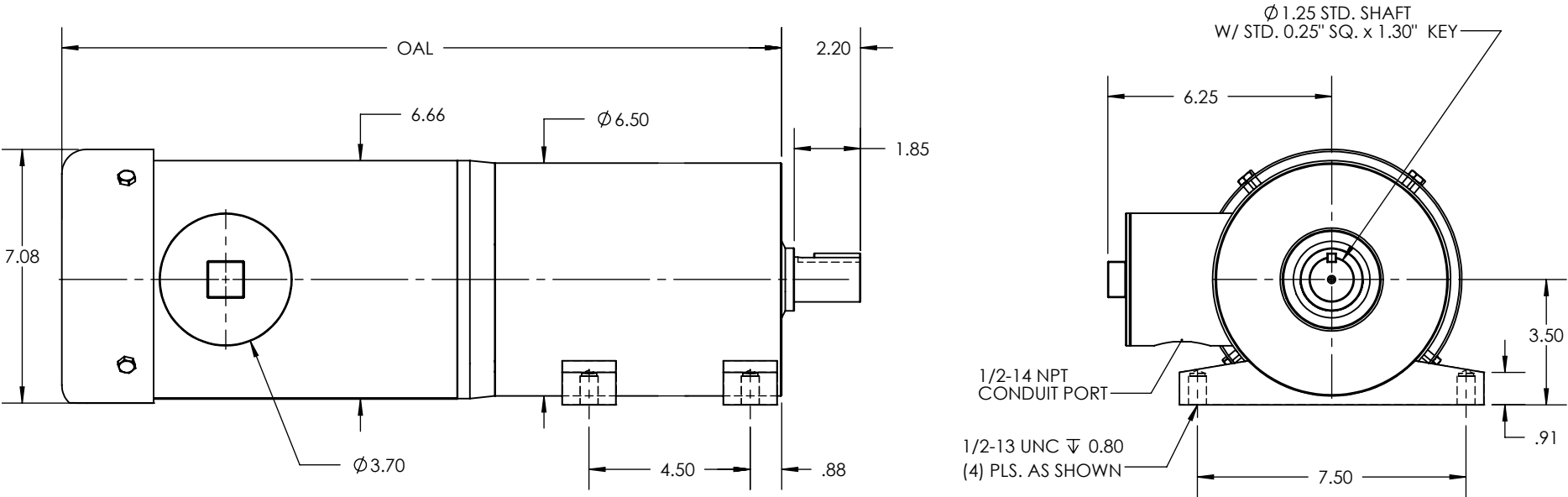
THIS DRAWING CONTAINS INFORMATION WHICH IS PROPRIETARY AND CONFIDENTIAL TO STAINLESS MOTORS, INC., AND IS TRANSMITTED IN CONFIDENCE. THE REPRODUCTION, USE OR DISCLOSURE, IN WHOLE OR IN PART, OF THE DESIGN CONTAINED HEREIN TO OTHERS IS PROHIBITED WITHOUT THE WRITTEN CONSENT OF STAINLESS MOTORS, INC.

© COPYRIGHT STAINLESS MOTORS, INC. ALL RIGHTS RESERVED. YEAR OF COPYRIGHT IS FIRST YEAR INDICATED ON THE DRAWING.

DO NOT SCALE DRAWING UNLESS OTHERWISE SPECIFIED	MATERIAL: T304 EXTERIOR 17-4 H1150 SHAFT	STAINLESS MOTORS INC.	
	FINISH: #4 LINE		
DIMENSIONS ARE IN INCHES DIMENSIONS AND SURFACE TEXTURE DESIGNATIONS APPLY PRIOR TO FINISH DEBURR AND BREAK ALL SHARP EDGES 0.005 - 0.015	GENERAL TOLERANCES: .X = +/- 0.015 .XX = +/- 0.010 .XXX = +/- 0.005	IL650 FRAME FOOT MOUNT TENV, THRU FOOT SANIFAN	
	FRACTIONAL = +/- 1/64 ANGULAR = +/- 1/2°		
REFERENCE DRAWING: DRAWING F:\Website\GEARBOXES\IL\IL650XXXTA\XXXX-56-TENV NUMBER:		DRAWN: WJK CHECK: ENG: JO DATE: 1/28/2019	

OAL DIMENSION						
RATIO	OUTPUT RPM	0.25-0.5 HP	0.75 HP	1 HP	1.5 HP	2 HP
3	580	17.11"	18.11"	18.61"	19.61"	19.61"
3.67	474					
4.2	414					
5	348					
9	193	18.10"	19.10"	19.60"	20.60"	20.60"
12.6	138					
15	116					
17.6	98					
21	82				---	---
25	69				---	---

REVISIONS			
REV.	DESCRIPTION	BY	DATE



- OTHER SHAFT SIZES AVAILABLE
- GREASE OR OIL LUBRICATION AVAILABLE
- OTHER RATIOS AVAILABLE UPON REQUEST

NOTES:

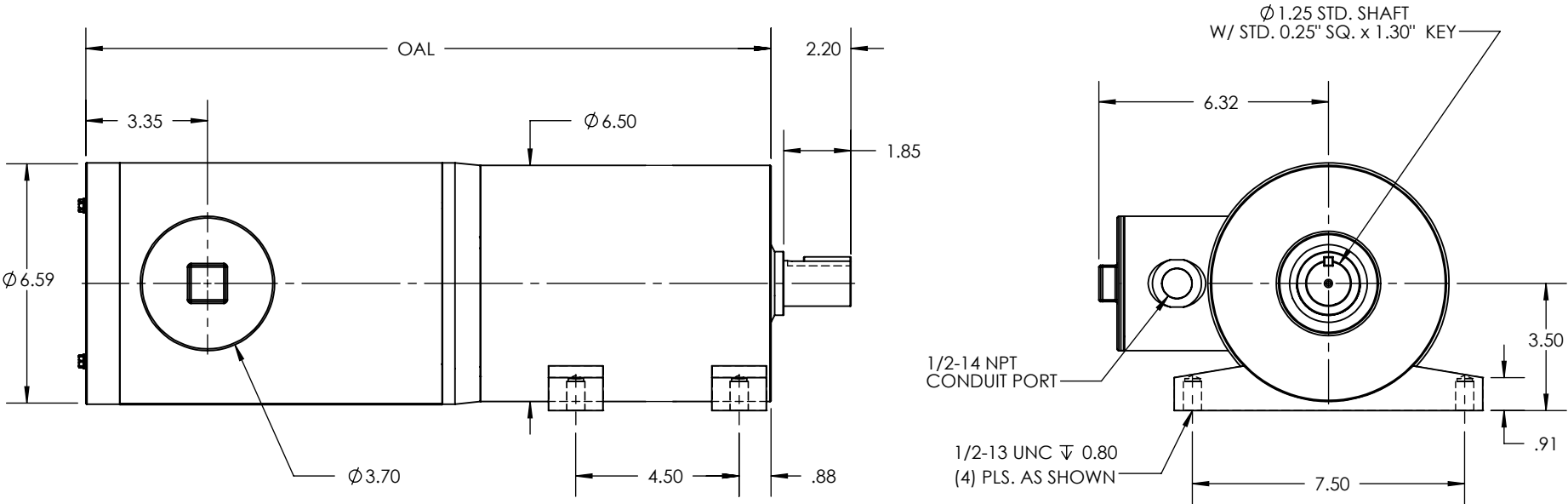
THIS DRAWING CONTAINS INFORMATION WHICH IS PROPRIETARY AND CONFIDENTIAL TO STAINLESS MOTORS, INC., AND IS TRANSMITTED IN CONFIDENCE. THE REPRODUCTION, USE OR DISCLOSURE, IN WHOLE OR IN PART, OF THE DESIGN CONTAINED HEREIN TO OTHERS IS PROHIBITED WITHOUT THE WRITTEN CONSENT OF STAINLESS MOTORS, INC.

© COPYRIGHT STAINLESS MOTORS, INC. ALL RIGHTS RESERVED. YEAR OF COPYRIGHT IS FIRST YEAR INDICATED ON THE DRAWING.

DO NOT SCALE DRAWING	MATERIAL: T304 EXTERIOR 17-4 H1150 SHAFT	STAINLESS MOTORS INC.	
UNLESS OTHERWISE SPECIFIED	FINISH:  #4 LINE	DRAWN: WJK	IL650 FRAME FOOT MOUNT TEFC, BLIND FOOT SANIFAN
DIMENSIONS ARE IN INCHES	GENERAL TOLERANCES:  .X = +/0.015 .XX = +/- 0.010 .XXX = +/- 0.005  FRACTIONAL = +/- 1/64 ANGULAR = +/- 1/2°	CHECK:	
DIMENSIONS AND SURFACE TEXTURE DESIGNATIONS APPLY PRIOR TO FINISH		ENG: JO	
DEBURR AND BREAK ALL SHARP EDGES 0.005 - 0.015		DATE: 1/28/2019	
REFERENCE DRAWING:  DRAWING F:\Website\GEARBOXES\IL\IL650XXBAXXXX-56 NUMBER:			

OAL DIMENSION						
RATIO	OUTPUT RPM	0.25-0.5 HP	0.75 HP	1 HP	1.5 HP	2 HP
3	580	16.39	17.39	17.89	18.89	18.89
3.67	474					
4.2	414					
5	348					
9	193	17.38	18.38	18.88	19.88	19.88
12.6	138					
15	116					
17.6	98					
21	82				---	---
25	69				---	---

REVISIONS			
REV.	DESCRIPTION	BY	DATE



- OTHER SHAFT SIZES AVAILABLE
- GREASE OR OIL LUBRICATION AVAILABLE
- OTHER RATIOS AVAILABLE UPON REQUEST

NOTES:

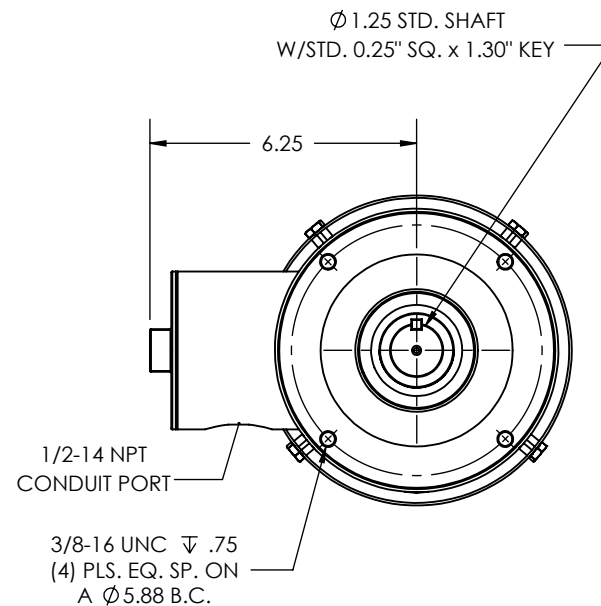
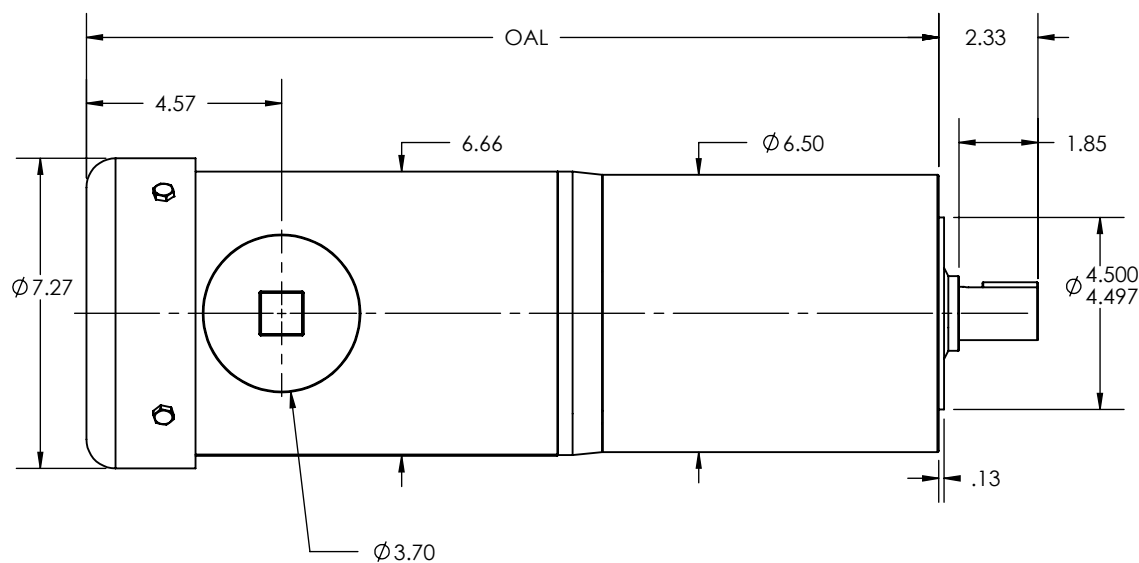
THIS DRAWING CONTAINS INFORMATION WHICH IS PROPRIETARY AND CONFIDENTIAL TO STAINLESS MOTORS, INC., AND IS TRANSMITTED IN CONFIDENCE. THE REPRODUCTION, USE OR DISCLOSURE, IN WHOLE OR IN PART, OF THE DESIGN CONTAINED HEREIN TO OTHERS IS PROHIBITED WITHOUT THE WRITTEN CONSENT OF STAINLESS MOTORS, INC.

© COPYRIGHT STAINLESS MOTORS, INC. ALL RIGHTS RESERVED. YEAR OF COPYRIGHT IS FIRST YEAR INDICATED ON THE DRAWING.

DO NOT SCALE DRAWING UNLESS OTHERWISE SPECIFIED	MATERIAL: T304 EXTERIOR 17-4 H1150 SHAFT	STAINLESS MOTORS INC.	
	FINISH: #4 LINE		
DIMENSIONS ARE IN INCHES DIMENSIONS AND SURFACE TEXTURE DESIGNATIONS APPLY PRIOR TO FINISH DEBURR AND BREAK ALL SHARP EDGES 0.005 - 0.015	GENERAL TOLERANCES: .X = +/- 0.015 .XX = +/- 0.010 .XXX = +/- 0.005	IL650 FRAME FOOT MOUNT TENV, BLIND FOOT SANIFAN	
	FRACTIONAL = +/- 1/64 ANGULAR = +/- 1/2°		
REFERENCE DRAWING: DRAWING F:\Website\GEARBOXES\IL\IL650XXBAXXX-56-TENV NUMBER:		DRAWN: WJK CHECK: JO ENG: JO DATE: 1/28/2019	

OAL DIMENSION						
RATIO	OUTPUT RPM	0.25-0.5 HP	0.75 HP	1 HP	1.5 HP	2 HP
3	580	16.98"	17.98"	18.48"	19.48"	19.48"
3.67	474					
4.2	414					
5	348					
9	193	17.97"	18.97"	19.47"	20.47"	20.47"
12.6	138					
15	116					
17.6	98					
21	82				---	---
25	69				---	---

REVISIONS			
REV.	DESCRIPTION	BY	DATE



- OTHER SHAFT SIZES AVAILABLE
- GREASE OR OIL LUBRICATION AVAILABLE
- OTHER RATIOS AVAILABLE UPON REQUEST

THIS DRAWING CONTAINS INFORMATION WHICH IS PROPRIETARY AND CONFIDENTIAL TO STAINLESS MOTORS, INC., AND IS TRANSMITTED IN CONFIDENCE. THE REPRODUCTION, USE OR DISCLOSURE, IN WHOLE OR IN PART, OF THE DESIGN CONTAINED HEREIN TO OTHERS IS PROHIBITED WITHOUT THE WRITTEN CONSENT OF STAINLESS MOTORS, INC.

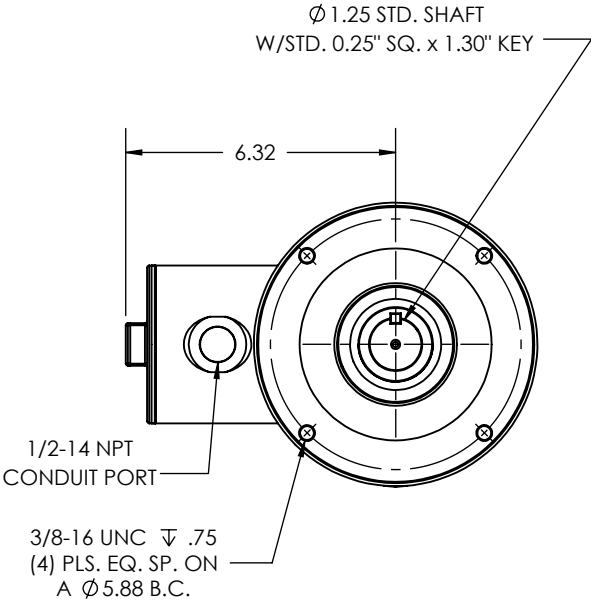
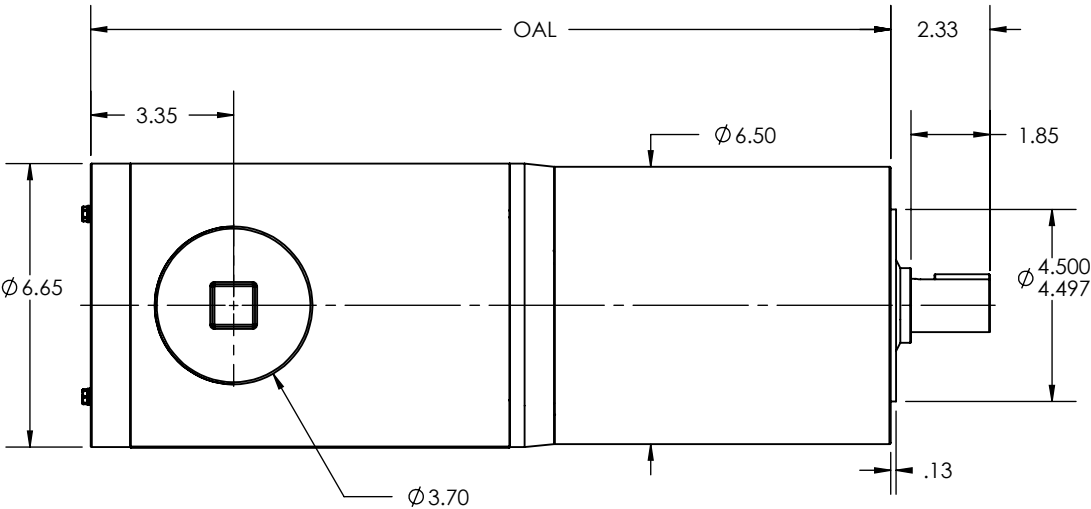
© COPYRIGHT STAINLESS MOTORS, INC. ALL RIGHTS RESERVED. YEAR OF COPYRIGHT IS FIRST YEAR INDICATED ON THE DRAWING.

DO NOT SCALE DRAWING	MATERIAL: T304 EXTERIOR 17-4 H1150 SHAFT	<b>STAINLESS MOTORS INC.</b>	
UNLESS OTHERWISE SPECIFIED	FINISH: #4 LINE		
DIMENSIONS ARE IN INCHES DIMENSIONS AND SURFACE TEXTURE DESIGNATIONS APPLY PRIOR TO FINISH	GENERAL TOLERANCES: .X = +/- 0.015 .XX = +/- 0.010 .XXX = +/- 0.005	DRAWN: WJK CHECK: ENG: JO DATE: 1/28/2019	IL650 FRAME C-FACE MOUNT TEFC, NON FOOTED SANIFAN
DEBURR AND BREAK ALL SHARP EDGES 0.005 - 0.015	FRACTIONAL = +/- 1/64 ANGULAR = +/- 1/2°		
REFERENCE DRAWING: NUMBER: F:\Website\GEARBOXES\IL\IL650XXCBXXXX-56			

NOTES:

OAL DIMENSION						
RATIO	OUTPUT RPM	0.25-0.5 HP	0.75 HP	1 HP	1.5 HP	2 HP
3	580	17.26"	18.26"	18.76"	19.76"	19.76"
3.67	474					
4.2	414					
5	348					
9	193	17.25"	18.25"	18.75"	19.75"	19.75"
12.6	138					
15	116					
17.6	98					
21	82				---	---
25	69				---	---

REVISIONS			
REV.	DESCRIPTION	BY	DATE



- OTHER SHAFT SIZES AVAILABLE
- GREASE OR OIL LUBRICATION AVAILABLE
- OTHER RATIOS AVAILABLE UPON REQUEST

# NOTES:

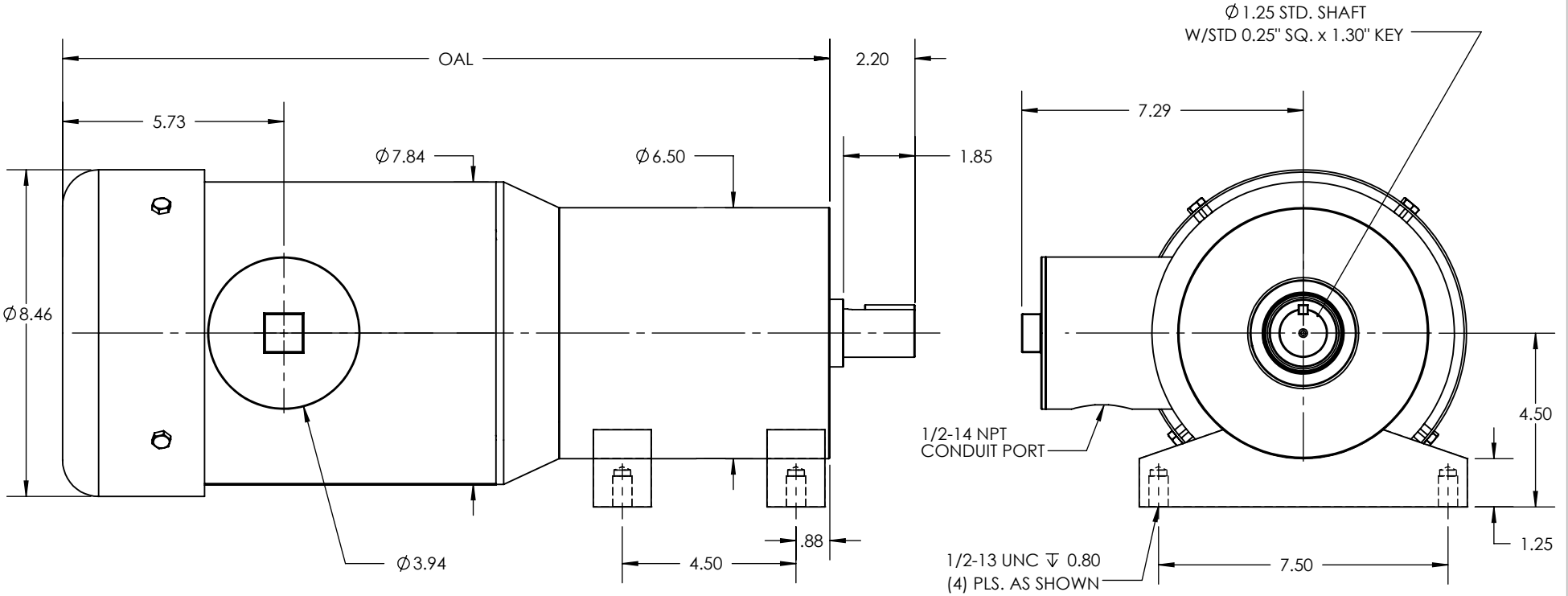
THIS DRAWING CONTAINS INFORMATION WHICH IS PROPRIETARY AND CONFIDENTIAL TO STAINLESS MOTORS, INC., AND IS TRANSMITTED IN CONFIDENCE. THE REPRODUCTION, USE OR DISCLOSURE, IN WHOLE OR IN PART, OF THE DESIGN CONTAINED HEREIN TO OTHERS IS PROHIBITED WITHOUT THE WRITTEN CONSENT OF STAINLESS MOTORS, INC.

© COPYRIGHT STAINLESS MOTORS, INC. ALL RIGHTS RESERVED. YEAR OF COPYRIGHT IS FIRST YEAR INDICATED ON THE DRAWING.

DO NOT SCALE DRAWING	MATERIAL: T304 EXTERIOR 17-4 H1150 SHAFT	STAINLESS MOTORS INC.	
UNLESS OTHERWISE SPECIFIED	FINISH: #4 LINE		
DIMENSIONS ARE IN INCHES	GENERAL TOLERANCES:	DRAWN: WJK	IL650 FRAME C-FACE MOUNT TENV, NON FOOTED SANIFAN
DIMENSIONS AND SURFACE TEXTURE DESIGNATIONS APPLY PRIOR TO FINISH	.X = +/- 0.015 .XX = +/- 0.010 .XXX = +/- 0.005	CHECK:	
DEBURR AND BREAK ALL SHARP EDGES 0.005 - 0.015	FRACTIONAL = +/- 1/64 ANGULAR = +/- 1/2°	ENG: JO	
		DATE: 1/28/2019	
REFERENCE DRAWING:	DRAWING NUMBER: F:\Website\GEARBOXES\IL\IL650XXCBXXXX-56-TENV		

OAL DIMENSION		
RATIO	OUTPUT RPM	3 HP
3	580	19.88"
3.67	474	
4.2	414	
5	348	
9	193	20.87"

REVISIONS			
REV.	DESCRIPTION	BY	DATE



1. OTHER SHAFT SIZES AVAILABLE
2. GREASE OR OIL LUBRICATION AVAILABLE
3. OTHER RATIOS AVAILABLE UPON REQUEST

THIS DRAWING CONTAINS INFORMATION WHICH IS PROPRIETARY AND CONFIDENTIAL TO STAINLESS MOTORS, INC., AND IS TRANSMITTED IN CONFIDENCE. THE REPRODUCTION, USE OR DISCLOSURE, IN WHOLE OR IN PART, OF THE DESIGN CONTAINED HEREIN TO OTHERS IS PROHIBITED WITHOUT THE WRITTEN CONSENT OF STAINLESS MOTORS, INC.

© COPYRIGHT STAINLESS MOTORS, INC. ALL RIGHTS RESERVED. YEAR OF COPYRIGHT IS FIRST YEAR INDICATED ON THE DRAWING.

DO NOT SCALE DRAWING

UNLESS OTHERWISE SPECIFIED

DIMENSIONS ARE IN INCHES  
DIMENSIONS AND SURFACE  
TEXTURE DESIGNATIONS  
APPLY PRIOR TO FINISH

ALL OUTSIDE RADII TO BE  
.025/.035  
ALL INSIDE RADII TO BE .032

REFERENCE  
DRAWING:  
NUMBER: F:\Website\GEARBOXES\IL\IL650XXBXXXX-180

MATERIAL: T304 EXTERIOR  
17-4 H1150 SHAFT

FINISH:  
#4 LINE

GENERAL TOLERANCES:  
.X =  $\pm 0.015$   
.XX =  $\pm 0.010$   
.XXX =  $\pm 0.005$   
FRACTIONAL =  $\pm 1/64$   
ANGULAR =  $\pm 1/2^\circ$

**STAINLESS  
MOTORS INC.**

DRAWN: WJK

CHECK:

ENG: JO

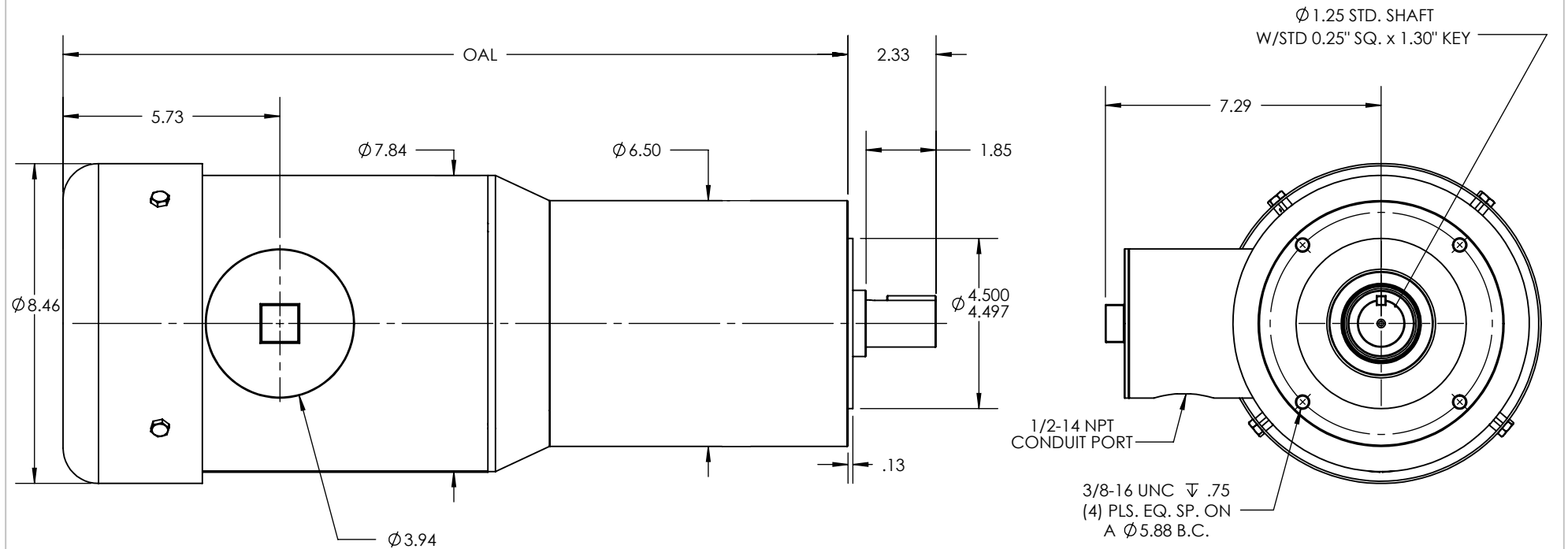
DATE: 1/28/2019

IL650 FRAME  
FOOT MOUNT  
TEFC, BLIND FOOT  
SANIFAN

NOTES:

OAL DIMENSION		
RATIO	OUTPUT RPM	3 HP
3	580	20.75"
3.67	474	
4.2	414	
5	348	
9	193	21.74"

REVISIONS			
REV.	DESCRIPTION	BY	DATE



1. OTHER SHAFT SIZES AVAILABLE
2. GREASE OR OIL LUBRICATION AVAILABLE
3. OTHER RATIOS AVAILABLE UPON REQUEST

THIS DRAWING CONTAINS INFORMATION WHICH IS PROPRIETARY AND CONFIDENTIAL TO STAINLESS MOTORS, INC., AND IS TRANSMITTED IN CONFIDENCE. THE REPRODUCTION, USE OR DISCLOSURE, IN WHOLE OR IN PART, OF THE DESIGN CONTAINED HEREIN TO OTHERS IS PROHIBITED WITHOUT THE WRITTEN CONSENT OF STAINLESS MOTORS, INC.

© COPYRIGHT STAINLESS MOTORS, INC. ALL RIGHTS RESERVED. YEAR OF COPYRIGHT IS FIRST YEAR INDICATED ON THE DRAWING.

DO NOT SCALE DRAWING

UNLESS OTHERWISE SPECIFIED

DIMENSIONS ARE IN INCHES  
DIMENSIONS AND SURFACE  
TEXTURE DESIGNATIONS  
APPLY PRIOR TO FINISH

ALL OUTSIDE RADII TO BE  
.025/.035  
ALL INSIDE RADII TO BE .032

REFERENCE  
DRAWING:  
NUMBER: F:\Website\GEARBOXES\IL\IL650XXCBXXXX-180

MATERIAL: T304 EXTERIOR  
17-4 H1150 SHAFT

FINISH:  
#4 LINE

GENERAL TOLERANCES:

.X =  $\pm 0.015$   
.XX =  $\pm 0.010$   
.XXX =  $\pm 0.005$

FRACTIONAL =  $\pm 1/64$   
ANGULAR =  $\pm 1/2^\circ$

**STAINLESS  
MOTORS INC.**

DRAWN: WJK

CHECK:

ENG: JO

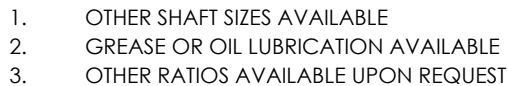
DATE: 1/28/2019

IL650 FRAME  
C-FACE MOUNT  
TEFC, NON FOOTED  
SANIFAN

NOTES:



REVISIONS			
REV.	DESCRIPTION	BY	DATE



THIS DRAWING CONTAINS INFORMATION WHICH IS PROPRIETARY AND CONFIDENTIAL TO STAINLESS MOTORS, INC., AND IS TRANSMITTED IN CONFIDENCE. THE REPRODUCTION, USE OR DISCLOSURE, IN WHOLE OR IN PART, OF THE DESIGN CONTAINED HEREIN TO OTHERS IS PROHIBITED WITHOUT THE WRITTEN CONSENT OF STAINLESS MOTORS, INC.

IL650 FRAME  
FOOT MOUNT  
TEFC, THRU FOOT  
SANIFAN