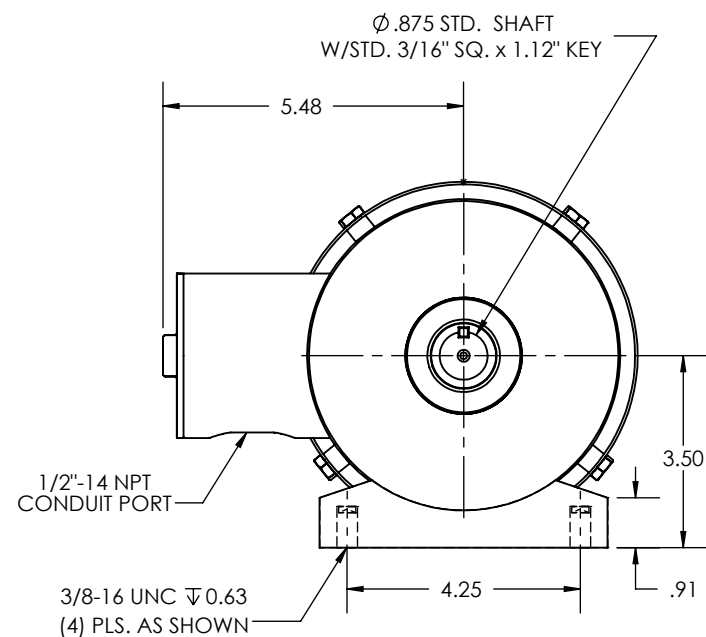
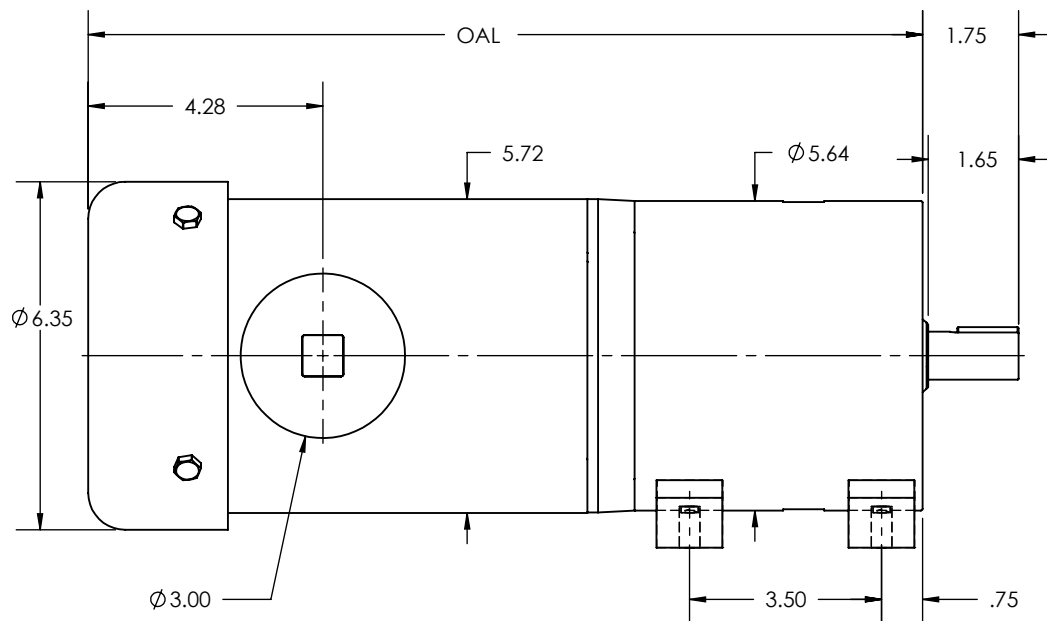


OAL DIMENSION			
RATIO	OUTPUT RPM	0.25-0.33 HP	0.5 HP
3.17	548	14.15"	15.15"
3.6	483		
4.25	409		
5.33	326		
10.05	173		
11.41	152	15.02"	16.02"
12.96	134		
13.47	129		
15.3	113		
16.89	103		
18.06	96		
19.18	90		
22.65	76		
28.4	61		

REVISIONS			
REV.	DESCRIPTION	BY	DATE



1. OTHER SHAFT SIZES AVAILABLE
2. GREASE OR OIL LUBRICATION AVAILABLE
3. OTHER RATIOS AVAILABLE UPON REQUEST

THIS DRAWING CONTAINS INFORMATION WHICH IS PROPRIETARY AND CONFIDENTIAL TO STAINLESS MOTORS, INC., AND IS TRANSMITTED IN CONFIDENCE. THE REPRODUCTION, USE OR DISCLOSURE, IN WHOLE OR IN PART, OF THE DESIGN CONTAINED HEREIN TO OTHERS IS PROHIBITED WITHOUT THE WRITTEN CONSENT OF STAINLESS MOTORS, INC.

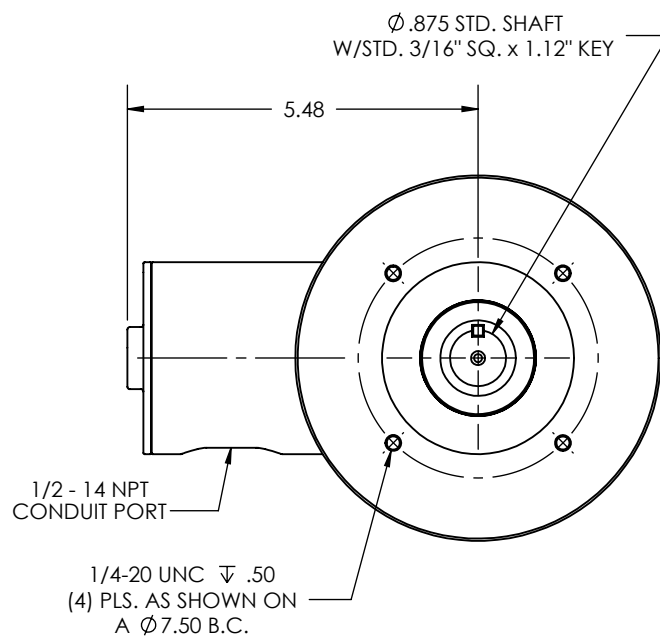
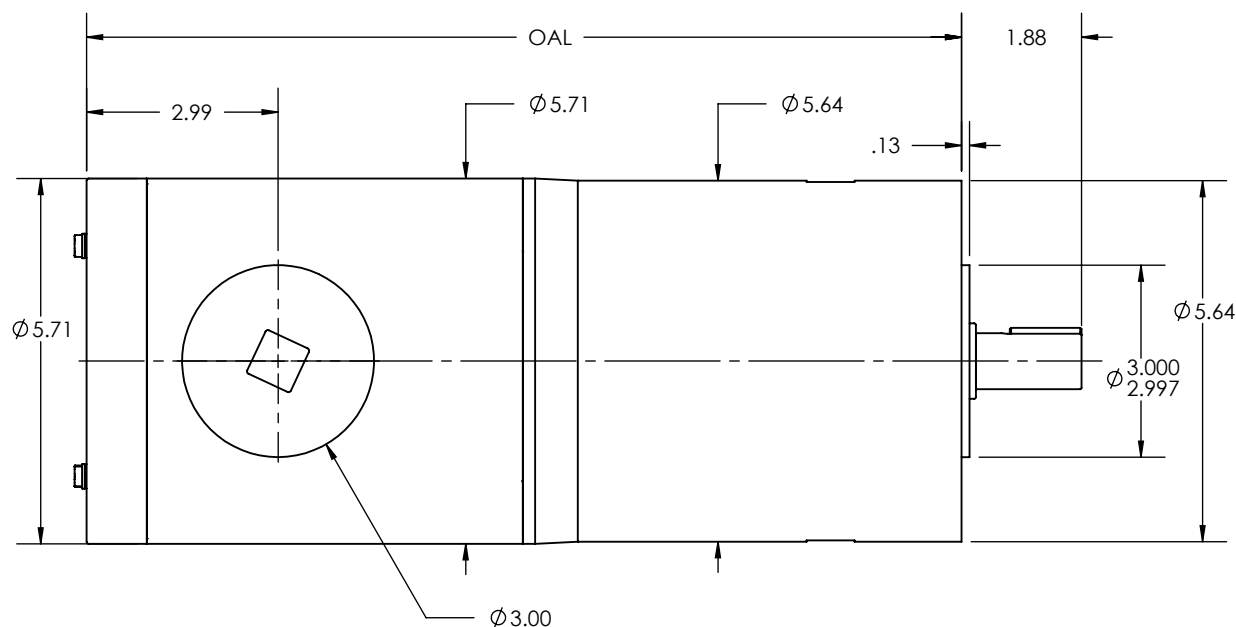
© COPYRIGHT STAINLESS MOTORS, INC. ALL RIGHTS RESERVED. YEAR OF COPYRIGHT IS FIRST YEAR INDICATED ON THE DRAWING.

DO NOT SCALE DRAWING	MATERIAL: T304 EXTERIOR 17-4 H1150 SHAFT	STAINLESS MOTORS INC.	
UNLESS OTHERWISE SPECIFIED	FINISH: #4 LINE		
DIMENSIONS ARE IN INCHES DIMENSIONS AND SURFACE TEXTURE DESIGNATIONS APPLY PRIOR TO FINISH	GENERAL TOLERANCES: .X = \pm 0.015 .XX = \pm 0.010 .XXX = \pm 0.005	DRAWN: WJK CHECK: ENG: JO DATE: 1/28/2019	IL570 FRAME FOOT MOUNT TEFC, BLIND FOOTED SANIFAN
DEBURR AND BREAK ALL SHARP EDGES 0.005 - 0.015	FRACTIONAL = \pm 1/64 ANGULAR = \pm 1/2°		
REFERENCE DRAWING: F:\Website\GEARBOXES\IL\IL570XXXBAXXX			

NOTES:

OAL DIMENSION			
RATIO	OUTPUT RPM	0.25-0.33 HP	0.5 HP
3.17	548	12.80"	13.80"
3.6	483		
4.25	409		
5.33	326		
10.05	173		
11.41	152	13.67"	14.67"
12.96	134		
13.47	129		
15.3	113		
16.89	103		
18.06	96		
19.18	90		
22.65	76		
28.4	61		

REVISIONS			
REV.	DESCRIPTION	BY	DATE



1. OTHER SHAFT SIZES AVAILABLE
2. GREASE OR OIL LUBRICATION AVAILABLE
3. OTHER RATIOS AVAILABLE UPON REQUEST

THIS DRAWING CONTAINS INFORMATION WHICH IS PROPRIETARY AND CONFIDENTIAL TO STAINLESS MOTORS, INC., AND IS TRANSMITTED IN CONFIDENCE. THE REPRODUCTION, USE OR DISCLOSURE, IN WHOLE OR IN PART, OF THE DESIGN CONTAINED HEREIN TO OTHERS IS PROHIBITED WITHOUT THE WRITTEN CONSENT OF STAINLESS MOTORS, INC.

© COPYRIGHT STAINLESS MOTORS, INC. ALL RIGHTS RESERVED. YEAR OF COPYRIGHT IS FIRST YEAR INDICATED ON THE DRAWING.

DO NOT SCALE DRAWING	MATERIAL: T304 EXTERIOR 17-4 H1150 SHAFT	STAINLESS MOTORS INC.	
UNLESS OTHERWISE SPECIFIED	FINISH: #4 LINE		
DIMENSIONS ARE IN INCHES	GENERAL TOLERANCES:	DRAWN: WJK	IL570 FRAME C-FACE MOUNT TENV, NON FOOTED SANIFAN
DIMENSIONS AND SURFACE TEXTURE DESIGNATIONS APPLY PRIOR TO FINISH	.X = +/-0.015 .XX = +/- 0.010 .XXX = +/- 0.005	CHECK:	
DEBURR AND BREAK ALL SHARP EDGES 0.005 - 0.015	FRACTIONAL = +/- 1/64 ANGULAR = +/- 1/2°	ENG: JO	
		DATE: 1/28/2019	

NOTES:

REFERENCE DRAWING: F:\Website\GEARBOXES\IL\IL570XXXCAXXX-TENV